

*Actual View*



## Unit 1207/13 Verona Drive WENTWORTH POINT NSW

2 2 1

Welcome to this nearly new two-bedroom apartment in the luxury renowned Savannah complex built up by the Japan's most respected community developer Sekisui House in Wentworth Point, one of the fastest growing vibrant suburbs in Sydney.

Centrally located just 18 kilometres from Sydney CBD, this private level 12, north-west facing 2-bedroom apartment is surrounded by parklands, water, and superb sporting and recreational facilities which offers a secured and private living environment. The new built bridge to Rhodes, Ferry, bus stop, the future primary school as well as the future shopping centre are all within walking distance.

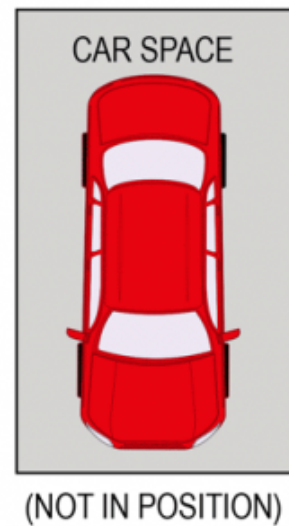
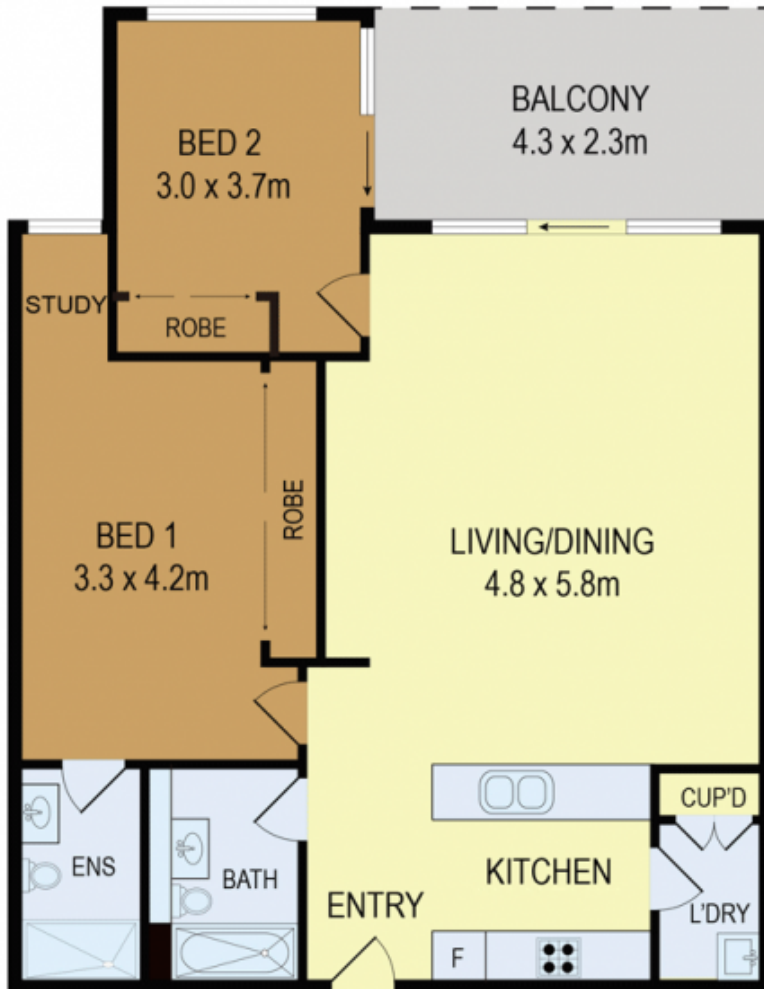
**Type** : Apartment

**View** : <https://www.onespaceproperty.com.au/sale/nsw/inner-west/wentworth-point/residential/apartment/7136498>



**John (junjie) Zhu**  
0292678810

[For full version visit the website](https://www.onespaceproperty.com.au)



All information contained herein is gathered from all sources we believe to be reliable. However we cannot guarantee its accuracy and interested parties should rely on their own enquiries.

CampaignPROS

1207/13 Verona Drive, Wentworth Point