



## 402/7 Henry Street Turrella NSW

2 2 1

Positioned on the 4th floor of this secure and contemporary complex which offers highly luxurious lifestyle and fantastic resort style amenities including gym, outdoor swimming pool, BBQ, landscaped communal garden, kids playground and onsite building management service, this light filled Northeast facing 2-bedroom apartment has a mix of modern exquisite and the warm cosy comfort of a spacious home.

Centrally located around 10 kilometres from Sydney CBD, this modern 2-bedroom apartment is close to Turrella Train Station and local amenities. Woolworths, Dan Murphys, Sydney Airport and Wolli Creek Village which creates focal point for local residents access to an active outdoor park

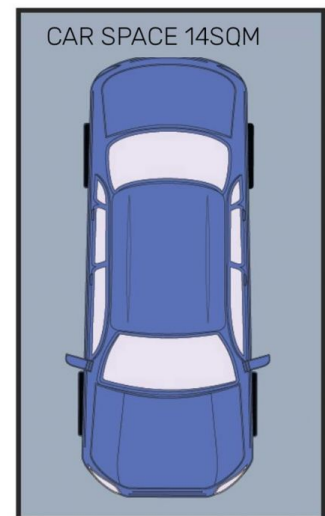
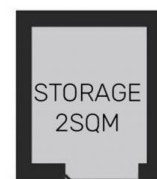
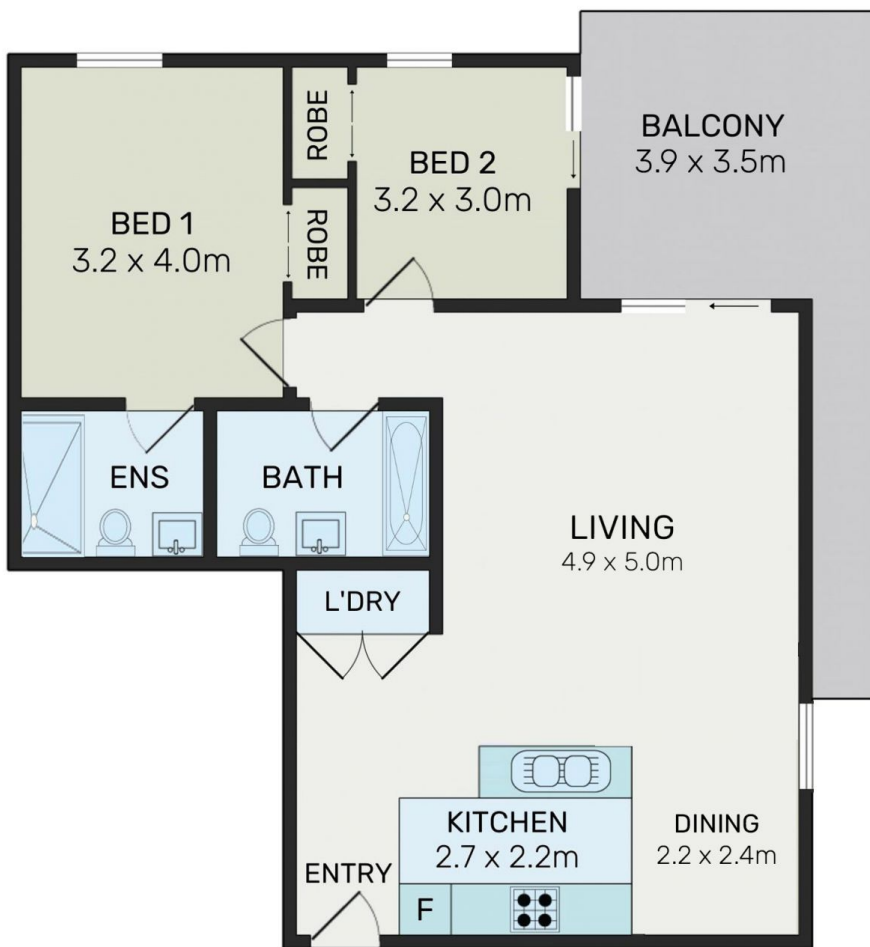
**Type** : Apartment

**View** : <https://www.onespaceproperty.com.au/sale/nsw/s-t-george/turrella/residential/apartment/7136513>



**John (junjie) Zhu**  
0292678810

[For full version visit the website](#)



All information contained herein is gathered from all sources we believed to be reliable. However we cannot guarantee its accuracy and interested parties should rely on their own inquiries.



# 402/7 Henry Street, Turrella