



4078/2E Porter Street Ryde NSW

2 2 1

Situated in the highly sought-after renowned Crowle Estate in prime location in Ryde, this bright & spacious two-bedroom apartment incorporates an irresistible combination of bespoke finishes and creative modern design which provides a modern and convenient lifestyle to its future owner.

Enjoying a leafy outlook to the internal communal garden and bathed in natural light, this well-designed apartment would suit buyers at all stages of life. Ideal for a growing family needing space, downsizer wishing for a low maintenance home, first home buyers or savvy investors.

Close to all amenities including waterfront foreshores,

[For full version visit the website](https://www.onespaceproperty.com.au)

Type : Apartment

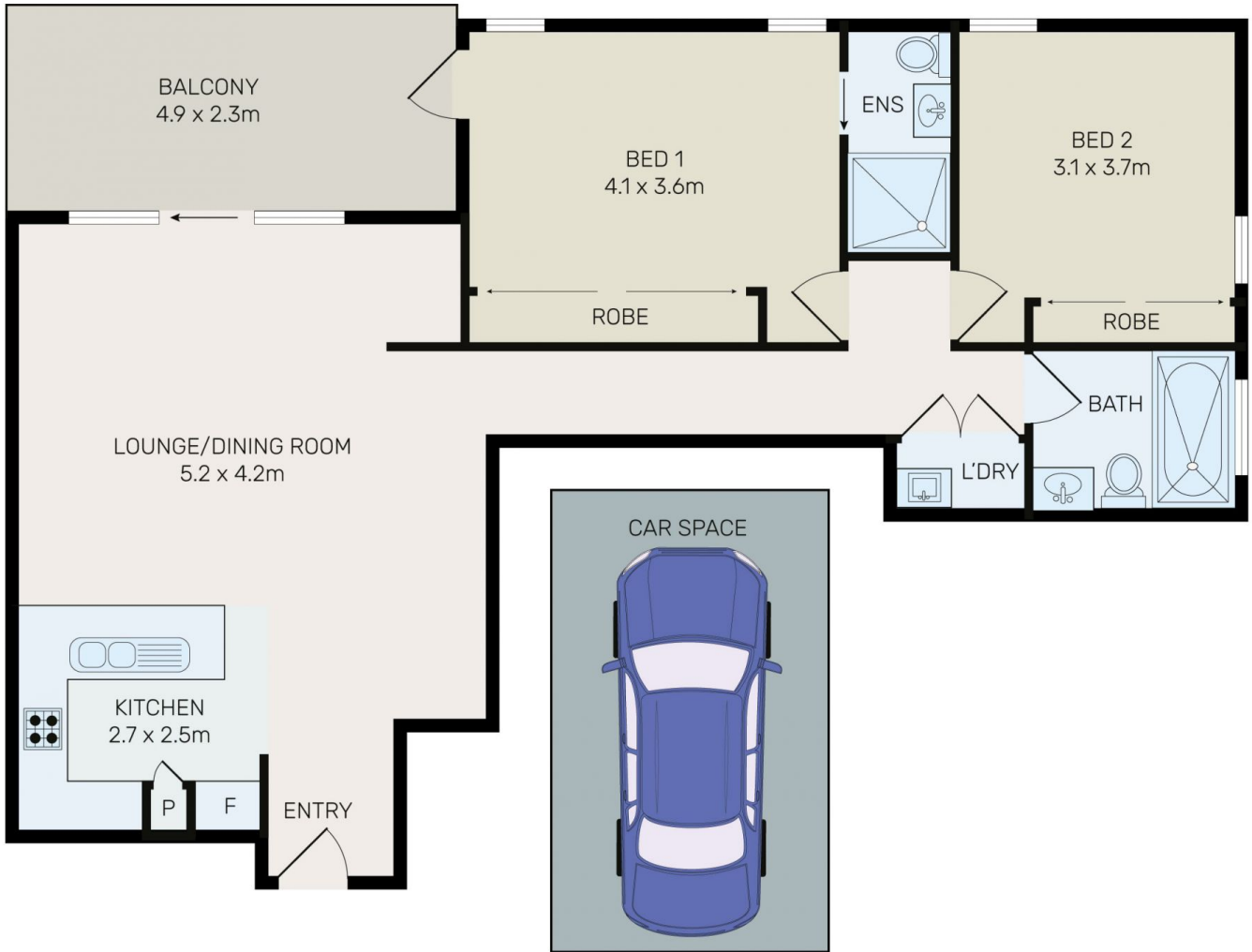
View : <https://www.onespaceproperty.com.au/sale/nsw/northern-suburbs/ryde/residential/apartment/7136576>



John (junjie) Zhu
0292678810



Elaine Chu
0292678810



All information contained herein is gathered from all sources we believe to be reliable. However we cannot guarantee its accuracy and interested parties should rely on their own enquiries.



4078/2E Porter Street, Ryde