



706/7 Australia Avenue SYDNEY OLYMPIC PARK NSW

1 1 1

Situated in Prime Position in Olympic Park, with stunning views of park land, close to all amenities, 2-Minute walk to Olympic Park train station, Local bus stops for access to surrounding areas. 5-minute walk to the Stadium, Sydney Olympic Park Aquatic Centre. DFO, Nestled among Caf?s, Restaurants, Short drive to North Strathfield, Aldi Supermarket, Schools and more.

**Type** : Apartment

**View** : <https://www.onespaceproperty.com.au/lease/nsw/inner-west/sydney-olympic-park/residential/apartment/7136630>

Apartment Features:

- Spacious Bedroom with built-ins
- Modern tiled bathroom



**Jackson (Jiajing) Liu**  
02 9739 9266

[For full version visit the website](https://www.onespaceproperty.com.au)



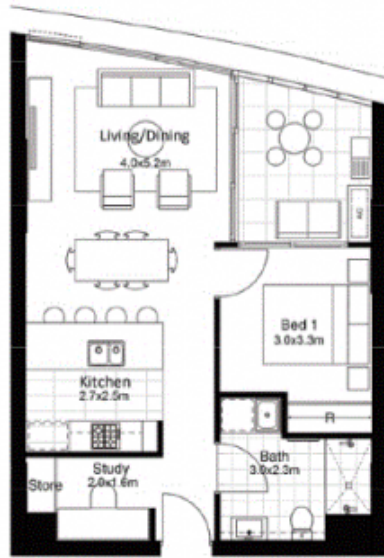
AUSTRALIA TOWERS

AT SYDNEY OLYMPIC PARK

1 BEDROOM + STUDY

C23.06	C16.06	C09.06
C22.06	C15.06	C08.06
C21.06	C14.06	C07.06
C20.06	C13.06	C06.06
C19.06	C12.06	C05.06
C18.06	C11.06	C04.06
C17.06	C10.06	C03.06

Internal Area	55m <sup>2</sup>
External Area	8m <sup>2</sup>
Total Area	63m <sup>2</sup>
No. of Car Space(s)	1



1300 88 20 88 | [australiatowers.com.au](http://australiatowers.com.au)

Disclaimer: While the best efforts have been made to accurately reflect the information in this document, it has been prepared prior to completion of construction and changes without notice may occur prior to completion of construction. The area shown in this document has been measured in accordance with the guidelines for measuring floor space in residential premises recommended by the Property Council of Australia and therefore the area shown on the registered plans may be reduced from those shown in this document. The furniture, furnishings, fixtures and fittings shown in this document are not included in the sale. Purchasers should refer to the contract for sale including the schedule of fixtures for a better understanding of what promises the vendor makes in connection with the sale and for a list of the items which will be included in the sale.



ecove®

