



708/7 Australia Avenue SYDNEY OLYMPIC PARK NSW

2 2 1

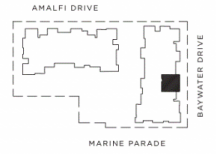
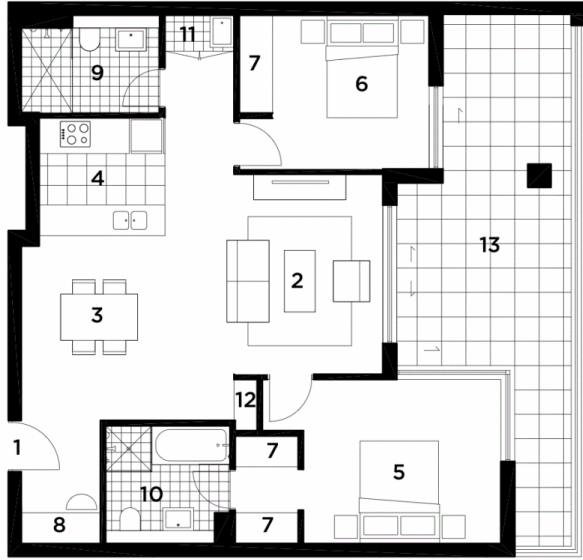
Australia Towers 2, located in Sydney Olympic Park, offers you a stunning home with beautiful parklands on your doorstep.

- excellent access to public transport and road networks, including a bus stop, two train stations, and by car 22 minutes to the city with easy access to the M2, M3, M4, M5 and M7
- 430 hectares of unspoiled parkland
- internationally famous stadia, and world-class sporting and leisure facilities
- striking architecture and expansive glass facades maximising views and natural light
- generous floor plan, intelligent design, beautiful finishes,

Type : Apartment

View : <https://www.onespaceproperty.com.au/lease/nsw/inner-west/sydney-olympic-park/residential/apartment/7136631>

[For full version visit the website](https://www.onespaceproperty.com.au)



LOCATION

UNIT 219
2 BEDROOM

INTERNAL 81 sqm
BALCONY 26 sqm
TOTAL AREA 107 sqm

KEY:

- 1 Entry
- 2 Living
- 3 Dining
- 4 Kitchen
- 5 Bedroom 1
- 6 Bedroom 2
- 7 Wardrobe
- 8 Study
- 9 Bathroom
- 10 Ensuite
- 11 Laundry
- 12 Store
- 13 Balcony