

B804/1 Link Road ZETLAND NSW

2 2 1

Welcome to Zetlands Paragon, a development that is strategically located in one of Sydney's fastest growing residential areas - A Future Town Centre. Only 4 km from the CBD with easy access to Eastern Distributor, M5 Motorway and Sydney Airport. A short stroll to trains & buses, shopping & recreational.

Type : Apartment

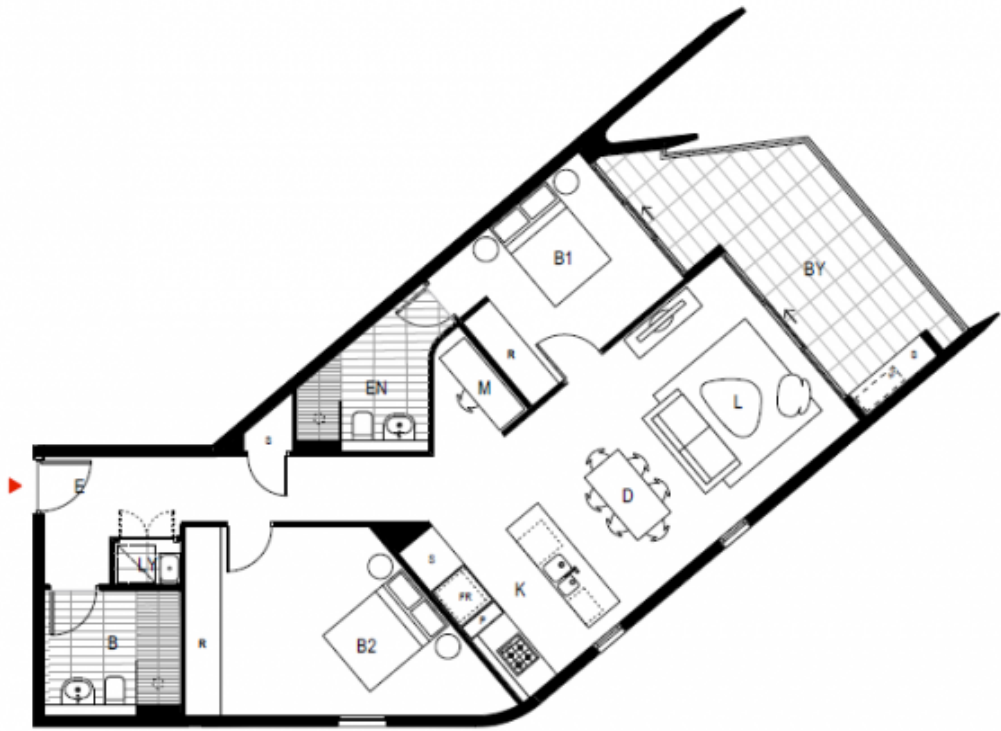
View : <https://www.onespaceproperty.com.au/lease/nsw/eastern-suburbs/zetland/residential/apartment/7136752>

Paragon consists of three buildings, whose design and construction are delivered by the most experienced team in the industry.

Property Features:

* Choose from 1 bedroom, 2 bedrooms, 3 bedrooms

[For full version visit the website](#)



Internal area: 88m²
 External area: 14m²
 Total area: 102m²

