



2001/13 Verona Drive WENTWORTH POINT NSW

1 1 1

Here in WENTWORTH POINT at the heart of everything, offering you the best choice of luxury & comfort lifestyle. Amenities includes concierge reception, relaxing indoor pool and gym for exclusive use of Savannah residents and their guests. Walking distance to parklands, cafes, restaurants, primary school, Marina Square shopping centre, with Coles supermarket. Olympic Park ferry wharf is a 2-minute walk, 35-minute ferry ride into City, Rhodes Station 10-min walk, Live in luxury a resort style, apartment you'll love, convenience at your feet.

Type : Apartment

View : <https://www.onespaceproperty.com.au/lease/nsw/inner-west/wentworth-point/residential/apartment/7136892>

Features:

- Bedroom with built-ins

[For full version visit the website](#)



Jackson (Jiajing) Liu
02 9739 9266

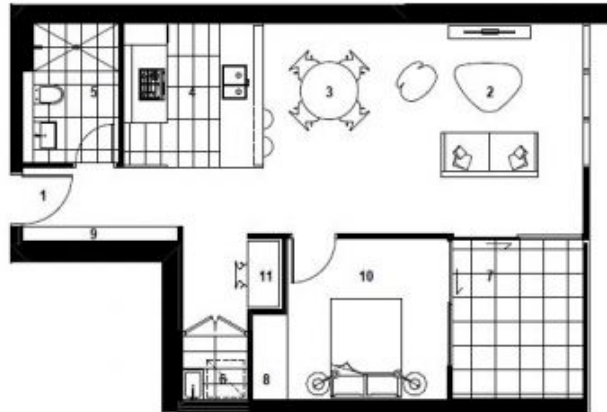
the
ADDRESS
WENTWORTH POINT

SAVANNAH

APARTMENT B20.01

1 Bed / 1 Bath

Internal Area 57 sqm
External Area 7 sqm
Total Area 64 sqm



Level 20



KEY

- | | |
|-------------|------------|
| 01 Entry | 07 Balcony |
| 02 Living | 08 Robe |
| 03 Dining | 09 Store |
| 04 Kitchen | 10 Bedroom |
| 05 Bathroom | 11 Utility |
| 06 Laundry | |

1800 333 818

TheAddressApartments.com.au