

B811/13 Verona Drive WENTWORTH POINT NSW

2 2 1

Inspect Today!

Balance and harmony are what you would expect from a community at the heart of everything, park and wide-open space, live in luxury, high above wonderful park land, surrounded by light and space.

A resort style apartment to choose from! You'll love living in, with the main focus on YOUR LIFESTYLE. Savannah Club exclusive to Savannah residents and guest 20-meter indoor swimming pool, GYM and multipurpose room. Sparking city skyline or the mountains view,

APARTMENT FEATURES

* well designed bedrooms with built-in robes

[For full version visit the website](#)

Type : Apartment

View : <https://www.onespaceproperty.com.au/lease/nsw/inner-west/wentworth-point/residential/apartment/7137158>

the
ADDRESS

WENTWORTH POINT

SAVANNAH

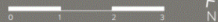
APARTMENT B8.11

2 Bed / 2 Bath

Internal Area 79 sqm
External Area 9 sqm
Total Area 88 sqm



Level 8

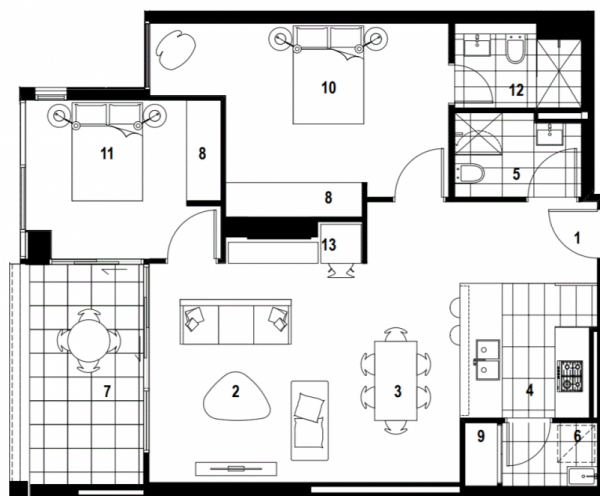


KEY

- | | |
|-------------|--------------|
| 01 Entry | 08 Robe |
| 02 Living | 09 Store |
| 03 Dining | 10 Bedroom 1 |
| 04 Kitchen | 11 Bedroom 2 |
| 05 Bathroom | 12 Ensuite |
| 06 Laundry | 13 Utility |
| 07 Balcony | |

1800 333 818

TheAddressApartments.com.au



Revision H 09.05.2016

Disclaimer: The particulars are set out as a general outline for the guidance of intending purchasers and do not constitute an offer or contract. All descriptions, dimensions, references to conditions and necessary permutations for use and other details are given in good faith and are believed to be correct, but any intending purchasers should not rely on them as statements or representations of fact, but must satisfy themselves by inspection or otherwise to the correctness of each item, and where necessary seek advice. No third party supplier or their agents has any authority to make or give any representations or warranty in relation to this property. *External areas may be larger for courtyard apartments. Refer to the detailed area schedule.