



## 2409/46 Savona Drive WENTWORTH POINT NSW

3 2 2

Balance and harmony are what you would expect from a community, here in Wentworth Point at the heart of everything, walking distance to parklands, cafes restaurants, primary school, Marina Square shopping centre, with Coles supermarket. Live in luxury a resort style, apartment to choose from! You will love living in, this lifestyle Taiga residents with roof top pool, BBQ, library room. Night light views from this apartment, looking over water views are spectacular. Bennelong Walk Bridge which links both Wentworth Point and Rhodes together, having access to Rhodes train station and Shopping Centre.

Apartment Features

[For full version visit the website](#)

**Type** : Apartment

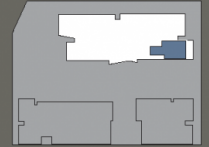
**View** : <https://www.onespaceproperty.com.au/lease/nsw/inner-west/wentworth-point/residential/apartment/7137163>



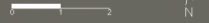
**Jackson (Jiajing) Liu**  
02 9739 9266

**APARTMENT A24.09**  
3 Bed/2 Bath

Internal Area 121 sqm  
External Area 37 sqm  
Total Area 158 sqm



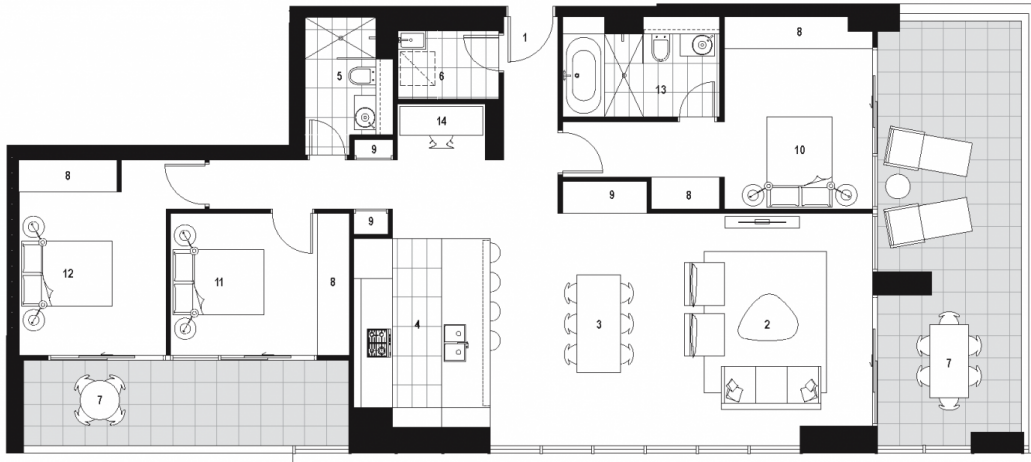
Level 24



**KEY**

- |             |              |
|-------------|--------------|
| 01 Entry    | 08 Robe      |
| 02 Living   | 09 Store     |
| 03 Dining   | 10 Bedroom 1 |
| 04 Kitchen  | 11 Bedroom 2 |
| 05 Bathroom | 12 Bedroom 3 |
| 06 Laundry  | 13 Ensuite   |
| 07 Balcony  | 14 Utility   |

1800 333 818  
TheAddressApartments.com.au



Revision 02 12/06/15

Disclaimer: The particulars are set out as a general outline for the guidance of intending purchasers and do not constitute an offer or contract. All descriptions, dimensions, references to conditions and necessary permutations for use and other details are given in good faith and are believed to be correct, but any intending purchasers should not rely on them as statements or representations of fact, but must satisfy themselves by inspection or otherwise to the correctness of each item, and where necessary seek advice. No third party supplier or their agents has any authority to make or give any representations or warranty in relation to this property. \*External areas may be larger for courtyard apartments. Refer to the detailed area schedule.