



207/46 Savona Drive WENTWORTH POINT NSW

1 1 1

Quality lifestyle awaits - a chic, cleverly & immaculately designed apartments with elevated podium courtyard and plenty of lush, private spaces for the exclusive use of Taiga residents and their guests.

Perfectly positioned between Sydneys harbour foreshore and the surrounding parklands.

Taiga is one of the final stages in this stunning Wentworth Point community.

Facilities include a stunning rooftop pool, relaxing music room, library, meeting room and a plush lounge area are exclusively available to the residents of Taiga.

[For full version visit the website](https://www.onespaceproperty.com.au)

Type : Apartment

View : <https://www.onespaceproperty.com.au/lease/nsw/inner-west/wentworth-point/residential/apartment/7137179>



Jackson (Jiajing) Liu
02 9739 9266

the ADDRESS

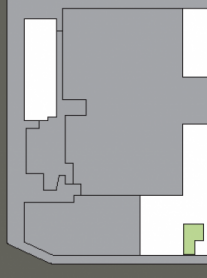
WENTWORTH POINT

TAIGA

APARTMENT C2.07

1 Bed/1 Bath

Internal Area 57 sqm
External Area 21 sqm
Total Area 78 sqm



Level 2

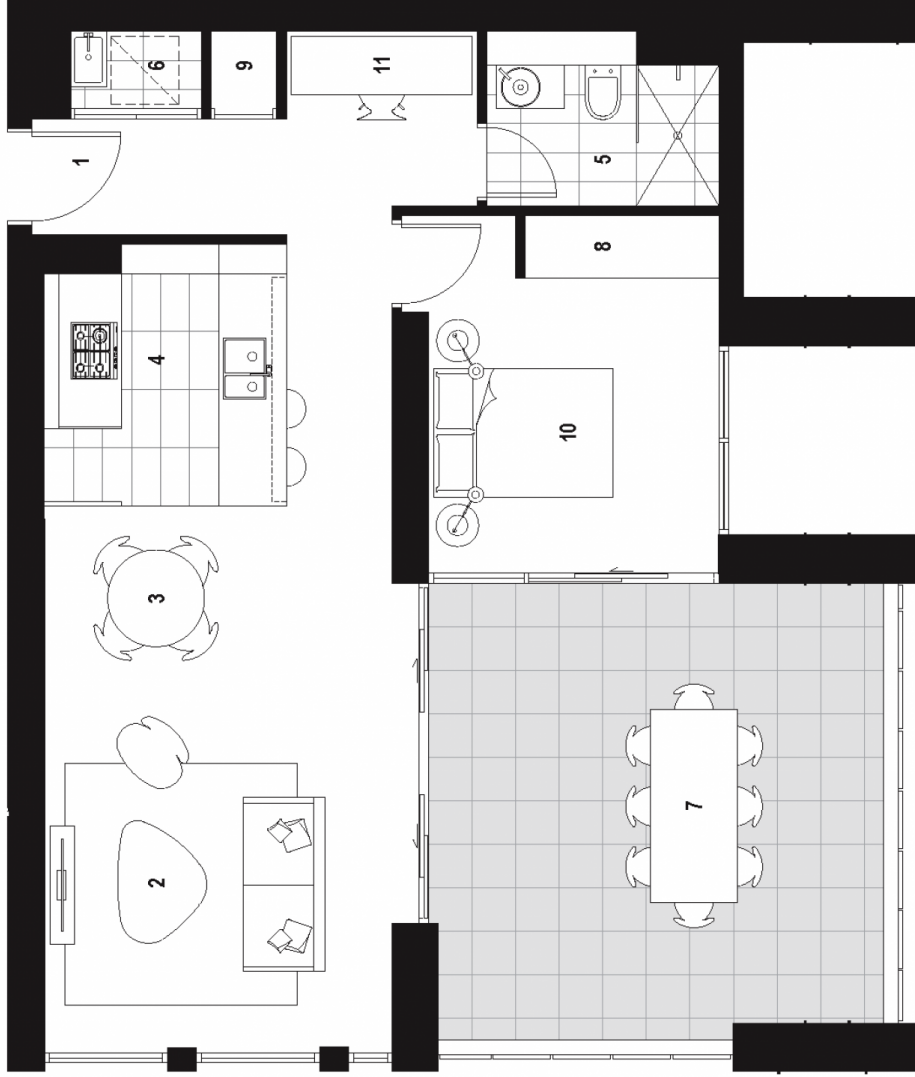


KEY

- 01 Entry
- 02 Living
- 03 Dining
- 04 Kitchen
- 05 Bathroom
- 06 Laundry
- 07 Balcony
- 08 Robe
- 09 Store
- 10 Bedroom
- 11 Utility

1800 333 818

TheAddressApartments.com.au



Revision 02 5/05/15

Disclaimer: The particulars are set out as a general outline for the guidance of intending purchasers and do not constitute an offer or contract. All descriptions, dimensions, measurements, references to conditions and necessary permissions for use and other details are given in good faith and do not constitute a warranty. The drawings are for illustrative purposes only and are not to scale. The drawings are not to be used for any other purpose without the prior written consent of the developer. The developer, its agents and its subcontractors accept no liability for any errors or omissions in the drawings. The drawings are not to be used for any other purpose without the prior written consent of the developer. The developer, its agents and its subcontractors accept no liability for any errors or omissions in the drawings. External areas may be larger for courtyard apartments. Refer to the detailed area schedule.