



Unit 307/1 Link Road ZETLAND NSW

2 2 1

Welcome to Zetlands Paragon, a development that is strategically located in one of Sydney's fastest growing residential areas - A Future Town Centre. Only 4 km to/ from the CBD with easy access to Eastern Distributor, M5 Motorway and Sydney Airport. A short stroll to trains & buses, shopping & recreational.

Paragon consists of three buildings, whose design and construction are delivered by the most experienced team in the industry.

Property Features:

* 2 Bedroom, 2 Bathrooms, 1 Car Space

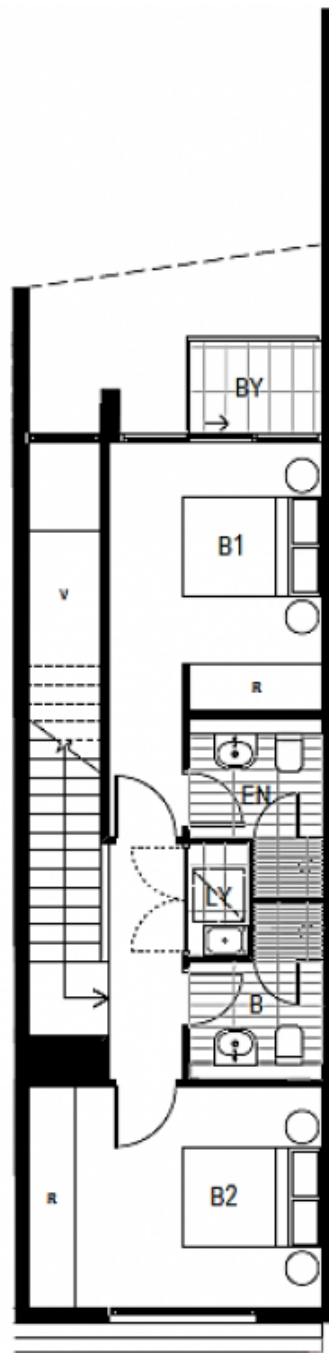
[For full version visit the website](https://www.onespaceproperty.com.au/lease/nsw/eastern-suburbs/zetland/residential/apartment/7137300)

Type : Apartment

View : <https://www.onespaceproperty.com.au/lease/nsw/eastern-suburbs/zetland/residential/apartment/7137300>



Jeff (kwok Fu) Chau
0292678810



Plan and layout of the apartment as shown in this plan are provided for marketing purposes in good faith, any intending purchaser should not rely on these statements to the extent permitted by law, HIFU Investment Pty Limited, its employees, agents and staff of sale and expressly disclaim any liability on any grounds whatsoever for any direct, indirect or consequential damage (whether foreseeable or not) which may arise out of or result from any party

Apartment > B.3.07