



1903/472 Pacific Highway ST LEONARDS NSW

2 2 1

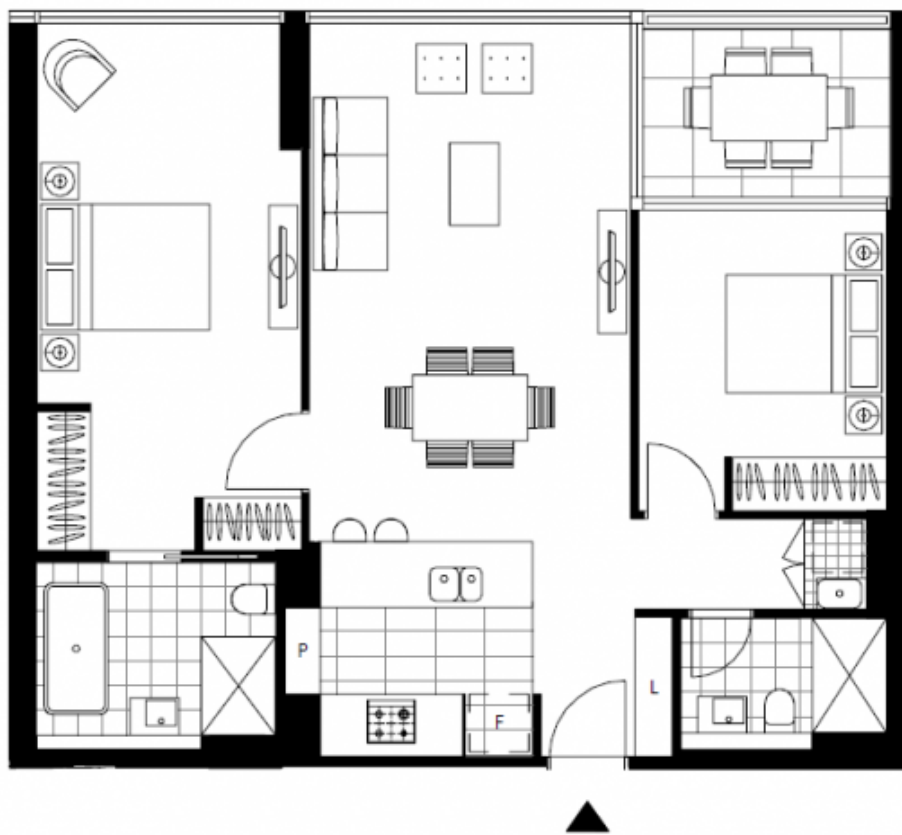
Located on level 19, this well-appointed BRAND-NEW apartment offers modern interiors with space and style. This brand new two bedroom apartment boasts district views and provides an ultra-convenient lifestyle and amazing building facilities. St Leonards train station is 400m away, bus stop 10m away and 5km distance to the city.

- Two double bedrooms with built-in wardrobes, main with ensuite bathroom
- Open-plan living and dining area opening onto balcony
- Modern gas cooking kitchen with Miele appliances and stone benchtops
- Luxurious bathrooms with plenty of storage
- Internal laundry with dryer included

**Type** : Apartment

**View** : <https://www.onespaceproperty.com.au/lease/nsw/north-shore-lower/st-leonards/residential/apartment/7137392>

[For full version visit the website](#)



LEVELS 10 - 13 & 15 - 26