

SYDNEY OLYMPIC PARK

303/18 SHORLINE DRIVE, RHODES



303/18 Shoreline Drive Rhodes NSW

2 2 1

Boasting expansive waterfront views overlooking the magnificent Homebush Bay, this Two bedrooms + study apartment set in the prestige "Water's Edge" building by Mirvac. It enviably occupies the valued third floor position within one of the very few absolute waterfront locations in Rhodes.

Perched on the edge of the Rhodes Foreshore Park and boasting luxury living to ensure this prime real estate is both sensational and irreplaceable, the spacious open plan of living, and large balcony & both bedrooms provides an enviable water outlook with sensational lifestyle.

This ideal high-performing long-term investment or owner occupy will be a strong addition to any property portfolio. Award winning restaurants, public transport and shopping

[For full version visit the website](#)

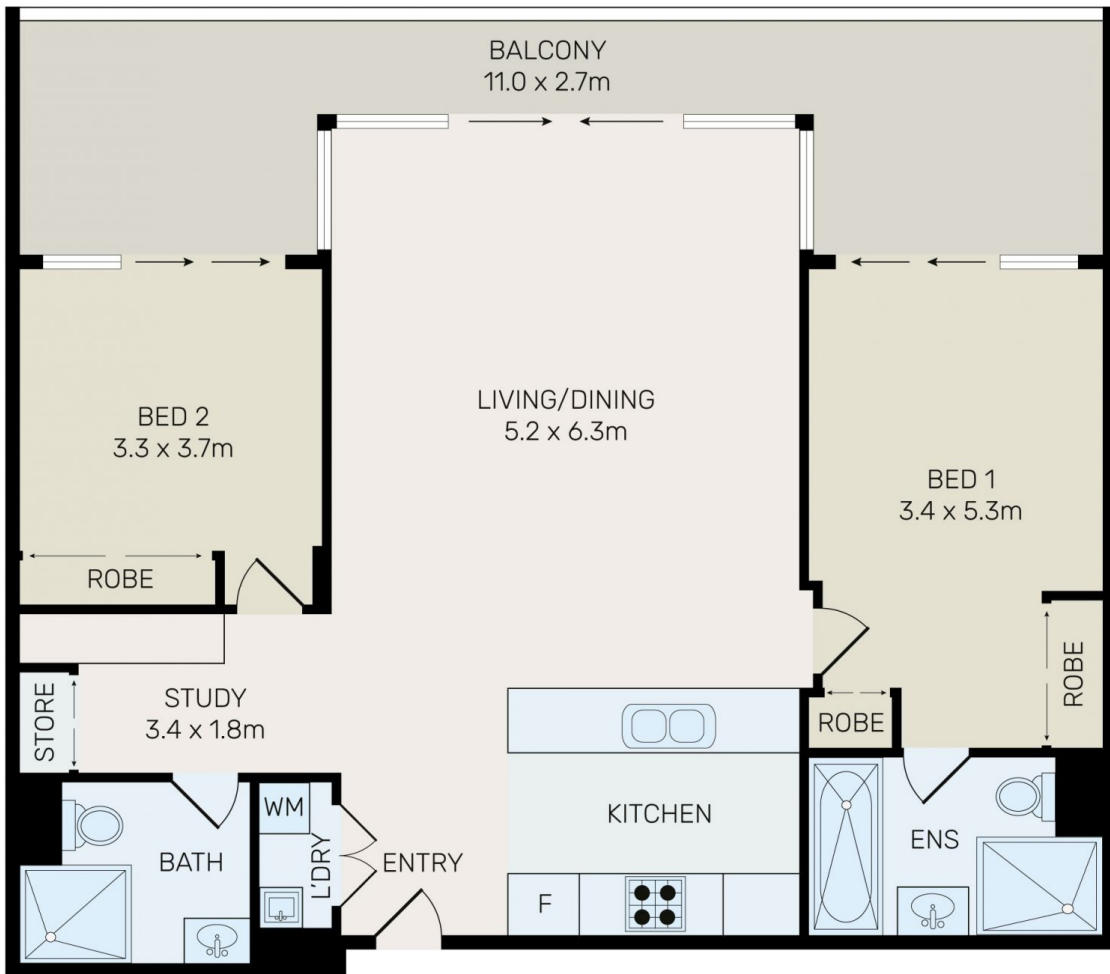
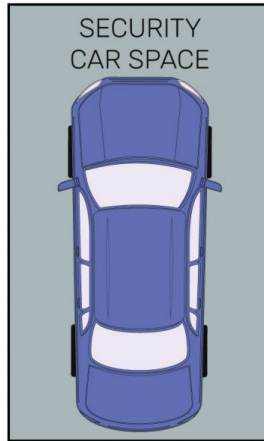
Type : Apartment

Price : \$ 1,235,000

View : <https://www.onespaceproperty.com.au/sale/nsw/inner-west/rhodes/residential/apartment/7155168>



Jeff (kwok Fu) Chau
0292678810



All information contained herein is gathered from all sources we believe to be reliable. However we cannot guarantee its accuracy and interested parties should rely on their own enquiries.



303/18 Shoreline Drive, Rhodes