



128/811 Elizabeth Street Zetland NSW

2 2 1

This as new 2-bedrooms unit located at the heart of Green Square Towner Center. A sun-drenched north aspect and covered entertainment balcony with leafy greenery all around give this beautifully designed apartment a welcoming homely feel in a connected village setting and built by well-known developer "Meriton". The two-bedroom apartment features one of the best layouts and aspects in the award-winning "Eminence" building, next door to Green square Library and Woolworth on the edge of Green square town centre. Visionary design, eco-friendly design principles and landscaped grounds create an exceptional living environment with The Common at the centre of the complex and Meriton resort style to enjoy. Featuring high-end finishes and level lift access to parking, this

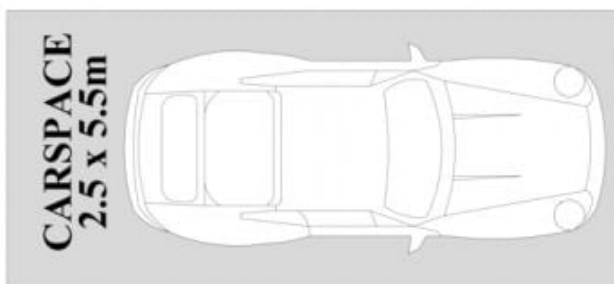
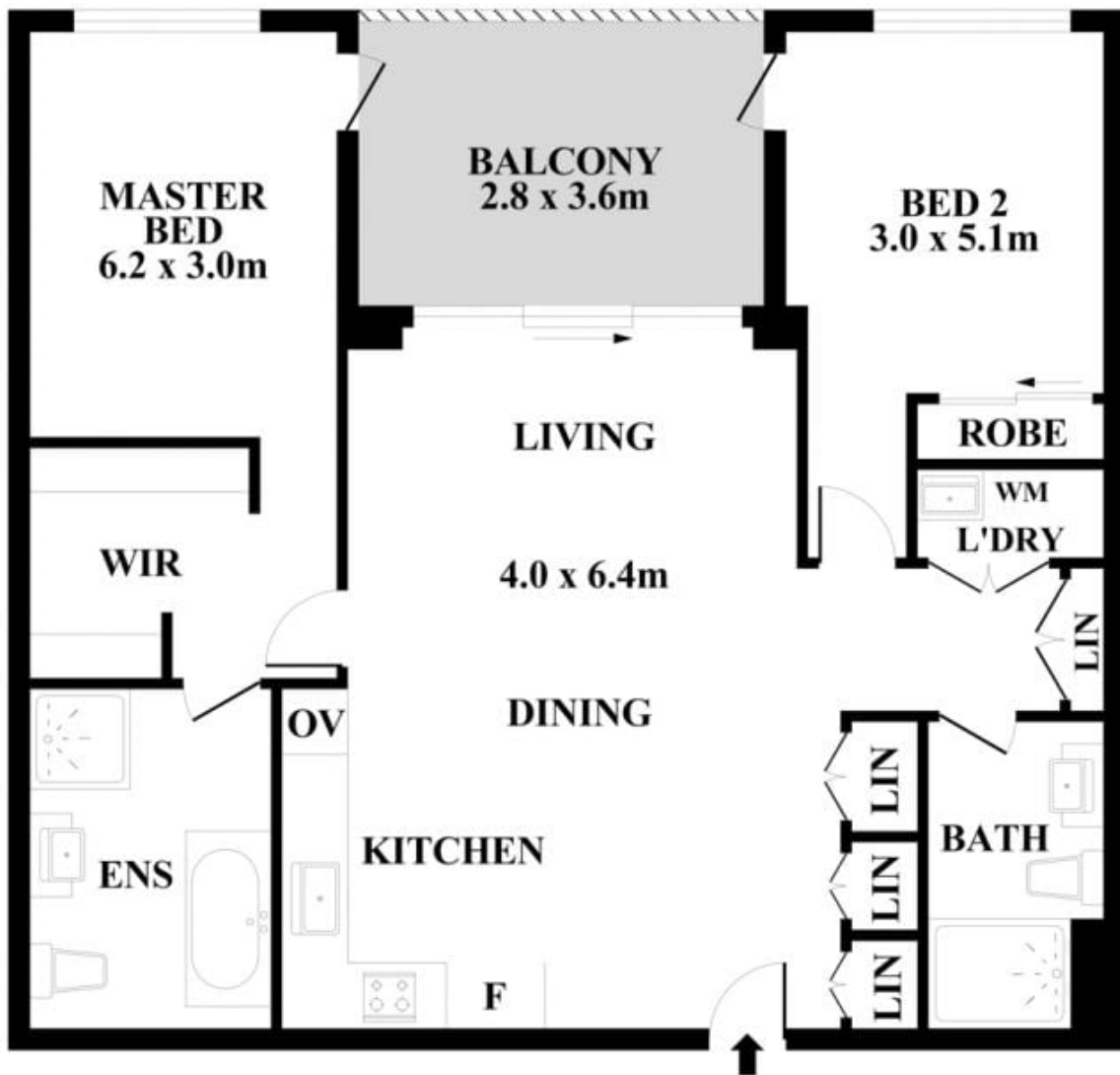
Type : Apartment

View : <https://www.onespaceproperty.com.au/lease/nsw/eastern-suburbs/zetland/residential/apartment/7265615>



Andrew Bow
0459 824 158

[For full version visit the website](https://www.onespaceproperty.com.au)



Plans shown are for presentation purposes only and not part of any legal document or title. They are subject to errors, omissions, inaccuracies and should not be used as a sole and accurate reference interested parties should make their own inquiries using independent sources.



128/811 Elizabeth Street, Zetland NSW 2017