



**307/233-235 Botany Road Waterloo NSW**

2 2 1

Looking for the sophistication of inner-city living, the convenience to Green square shopping, train station, universities, hospitals, parks, golf courses, and Eastern Suburb beaches? Then you cannot miss this fabulous split-level 2-bedroom apartment which satisfies all your needs.

Centrally located just 4 kilometers from Sydney CBD, this private level 3&4, Northeast facing 2-bedroom apartment boasts an excellent layout with spacious open plan design which makes this impressive apartment span a total size of 115 SQM on the title.

Apartment Features:

Downstairs:

Expansive living & dining area flows seamlessly to a large

**Type** : Apartment

**View** : <https://www.onespaceproperty.com.au/lease/nsw/eastern-suburbs/waterloo/residential/apartment/7342807>

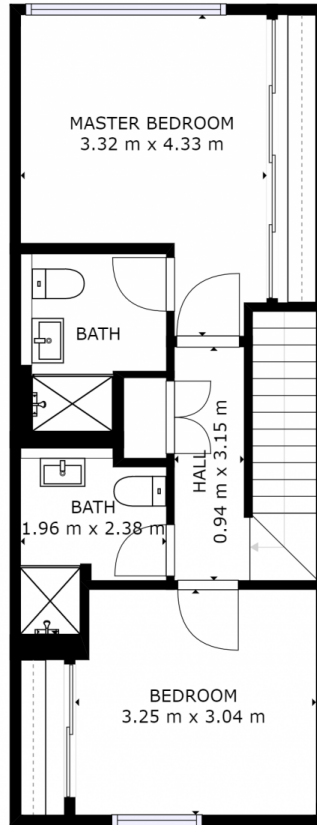


**Joshua Weigand**  
02 8283 7531

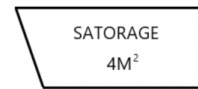
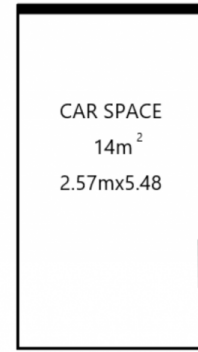
[For full version visit the website](#)



FLOOR 1



FLOOR 2



All information contained herein is gathered from all sources we believe to be reliable. However we cannot guarantee its accuracy and interested parties should rely on their own enquiries.

GROSS INTERNAL AREA  
 FLOOR 1: 37 m<sup>2</sup>, FLOOR 2: 43 m<sup>2</sup>  
 CS & SR: 18 m<sup>2</sup>, BALCONY: 15 m<sup>2</sup>  
 TOTAL: 113 m<sup>2</sup>

**BMEGROUP.COM.AU**