



213/5 Verona Drive Wentworth Point NSW

2 2 1

Be impressed with this well-maintained modern 2-bedroom apartment in the architecturally designed complex- "Atlas" in the sought-after Wentworth Point community. Boasting a desirable open floor plan, this architecturally designed apartment offers a spacious and sophisticated interior with superb finishing.

Within walking distance to Ferry Wharf, Marina Square Shopping Centre, Wentworth Point Public School, local shops, cafes, restaurants, convenient transport links to City & Parramatta and Bennelong Bridge which provides a quick link to Rhodes, this deluxe executive home offers the ultimate lifestyle for discerning buyers.

Apartment Features:

[For full version visit the website](https://www.onespaceproperty.com.au)

Type : Unit

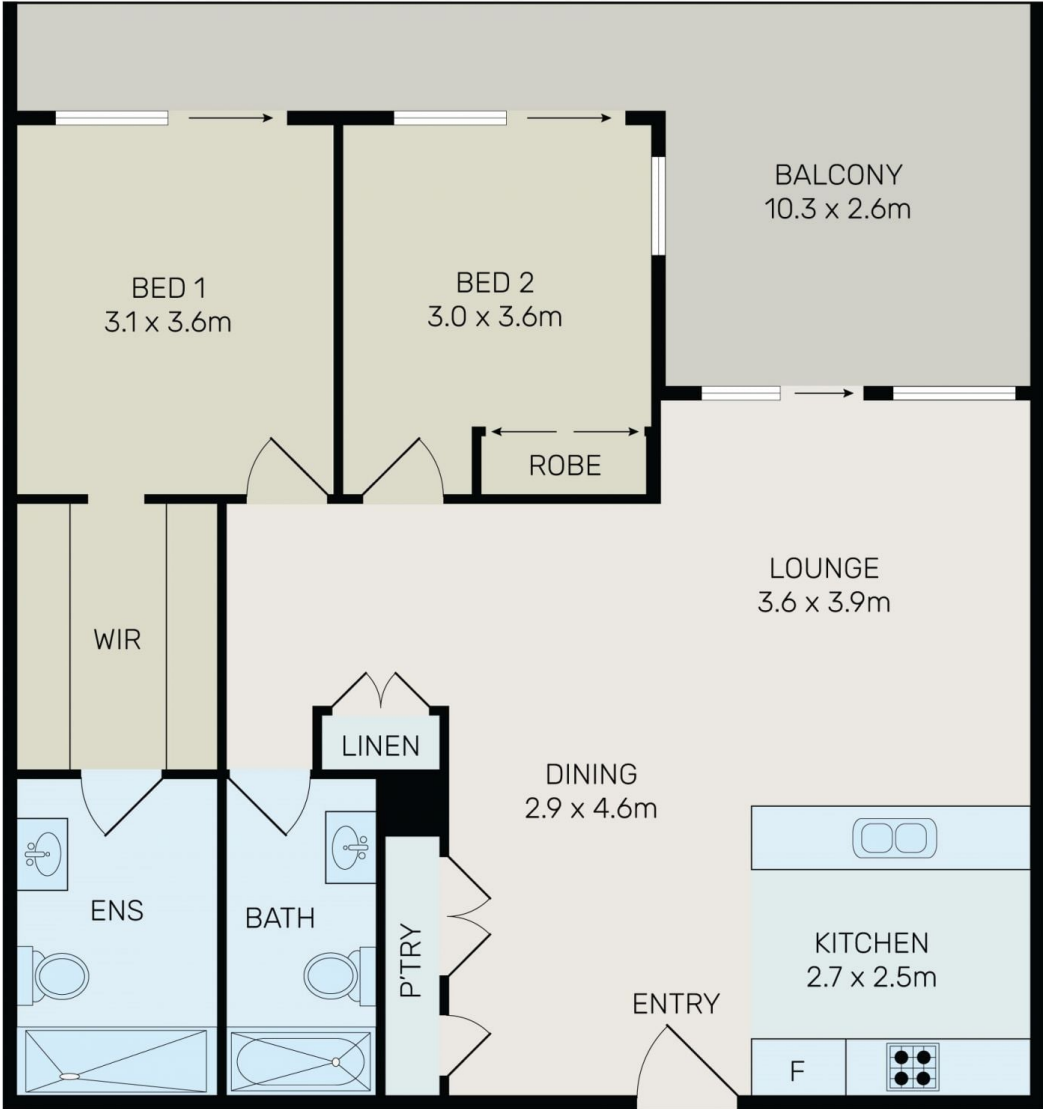
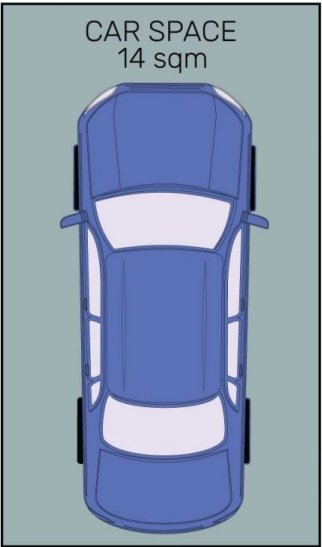
View : <https://www.onespaceproperty.com.au/sale/nsw/inner-west/wentworth-point/residential/unit/7439173>



John (junjie) Zhu
0292678810



Jeff (kwok Fu) Chau
0292678810



All information contained herein is gathered from all sources we believe to be reliable. However we cannot guarantee its accuracy and interested parties should rely on their own enquiries.



213/5 Verona Drive, Wentworth Point