



403/147 Ross Street Forest Lodge NSW

2 2 1

Presenting a delicately refined version, this exceptional apartment epitomizes modern luxury with an unwavering sense of style. Situated in the "CHEVALIER" building of prestigious Harold Park community, it offers an exquisite living experience amidst lush park surroundings.

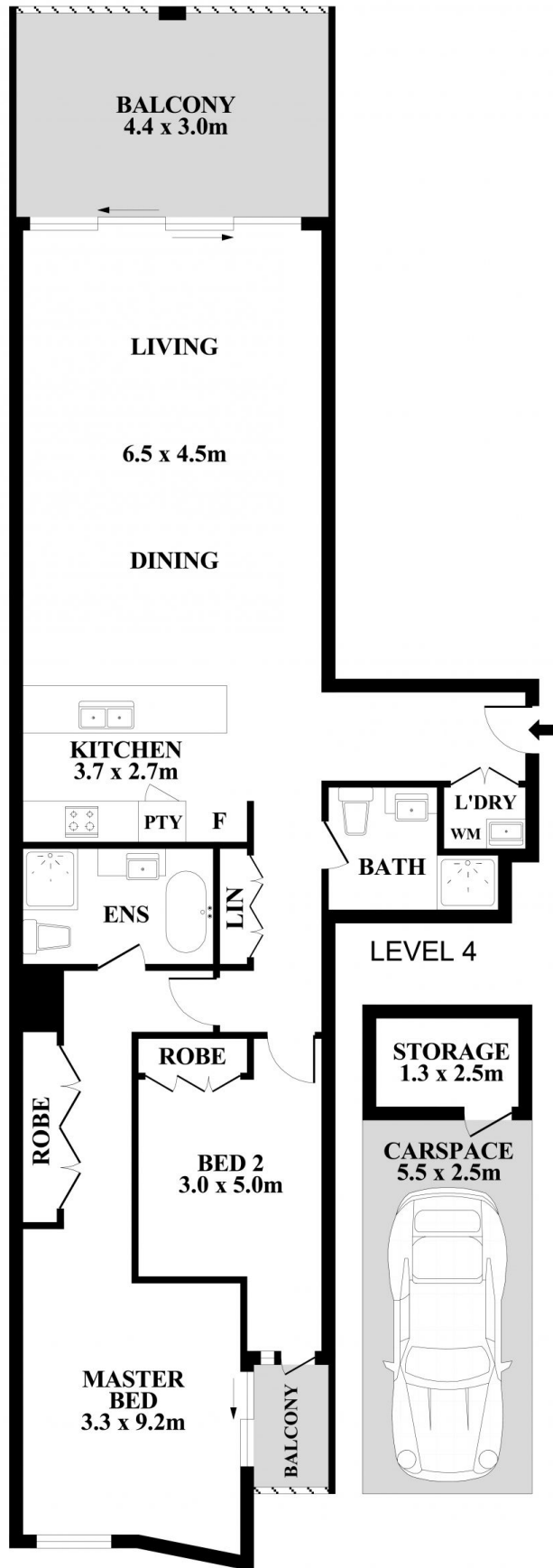
Reflecting the pinnacle of architectural excellence, 'Chevalier' is a testament to Mirvac's expertise in design and industry-leading construction. Surrounded by parkland extending to Sydney Harbour foreshore, it offers a lifestyle for those to embrace the outdoors. Steps to Tramsheds, light rail, bus, and cycleways. Glebe village, Broadway shopping centre, Sydney CBD, University of Sydney is only minutes away.

[For full version visit the website](#)

Type : Unit
Building Size : 131 sqm
View : <https://www.onespaceproperty.com.au/sale/nsw/inner-west/forest-lodge/residential/unit/7604692>



John (junjie) Zhu
0292678810



Plans shown are for presentation purposes only and not part of any legal document or title. They are subject to errors, omissions, inaccuracies and should not be used as a sole and accurate reference interested parties should make their own inquiries using independent sources.



403/139-159 Ross Street, Forest Lodge, NSW 2037