



## 903/1 Link Road Zetland NSW

1 1

beautiful Apartment in Zetland Paragon

Welcome to Zetlands Paragon, a development that is strategically located in one of Sydney's fastest growing residential area- A Future Town Centre. Only 4 km to/ from the CBD with easy access to Eastern Distributor, M5 Motorway and Sydney Airport. A short stroll to trains & buses, shopping & recreational.

Paragon consists of three buildings, whose design and construction are delivered by the most experienced team in the industry.

Feature:

- Light filled interiors with a generous and open plan living

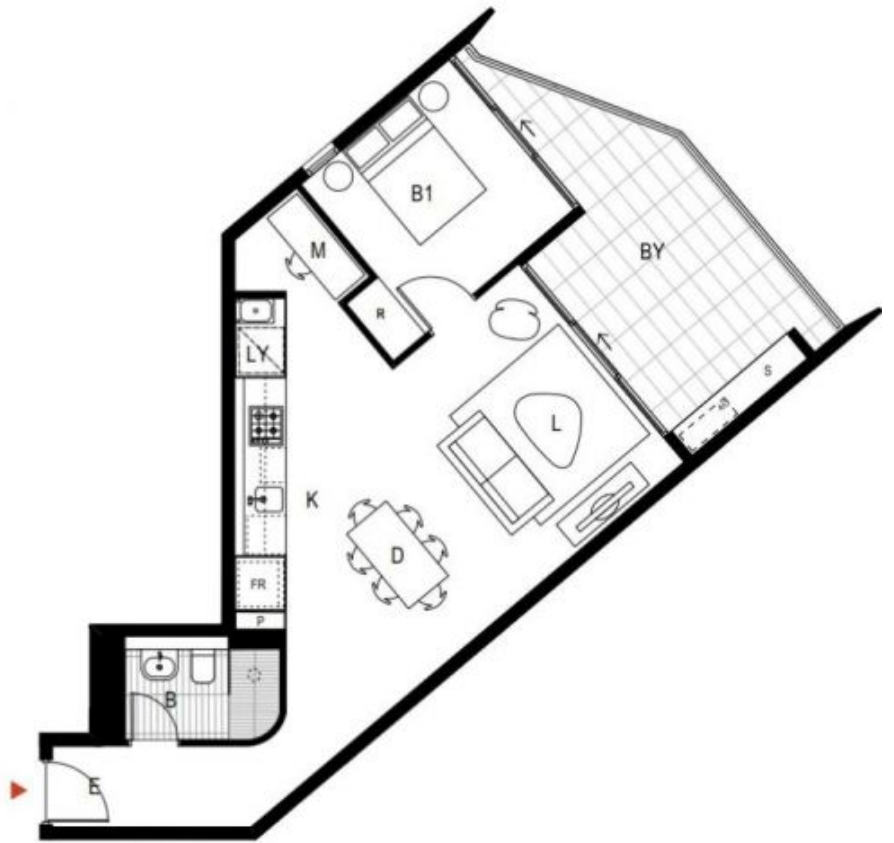
[For full version visit the website](https://www.onespaceproperty.com.au/lease/nsw/eastern-suburbs/zetland/residential/apartment/7642037)

**Type** : Apartment

**View** : <https://www.onespaceproperty.com.au/lease/nsw/eastern-suburbs/zetland/residential/apartment/7642037>



**Joshua Weigand**  
02 8283 7531



Internal area: 53m<sup>2</sup>  
 External area: 14m<sup>2</sup>  
 Total area: 67m<sup>2</sup>

The information, design, dimension and layout of the apartment as shown in this plan are provided for marketing purposes only and whilst it is prepared in good faith, any intending purchaser should not rely on them as statement or representation of fact. To the extent permitted by law, HPU Investment Pty Limited, its employees, agents and consultants relies on the contract of sale and expressly disclaims any liability on any grounds whatsoever for any direct, indirect or consequential loss and damage (whether foreseeable or not) which may arise out of or result from any party (including the purchaser) acting on or relying upon all or any part of this plan notwithstanding any negligence or lack of care.



Apartment > B.9.03  
 PARAGON > STAGE 02\_BUILDING B