



1310/13 Verona Drive Wentworth Point NSW

1 1 1

Located just footsteps from all the convenient lifestyle benefits Wentworth Point has to offer, this contemporary luxury 1-bedroom apartment has a mix of modern sophistication and the warm cosy comfort of a spacious home. Marina Square Shopping Centre, Wentworth Point Public School, local shops, cafes, restaurants, bus stops, ferry wharf and Bennelong Bridge which provides a quick link to Rhodes are just within short walking distance.

Centrally located just 18 kilometres from Sydney CBD, this private level 14, one bedroom apartment is situated in the iconic "Savannah" complex offering fantastic resort style amenities including gym, indoor swimming pool and dedicated onsite concierge service which are exclusively available to the residents of "Savannah".

Apartment Features:

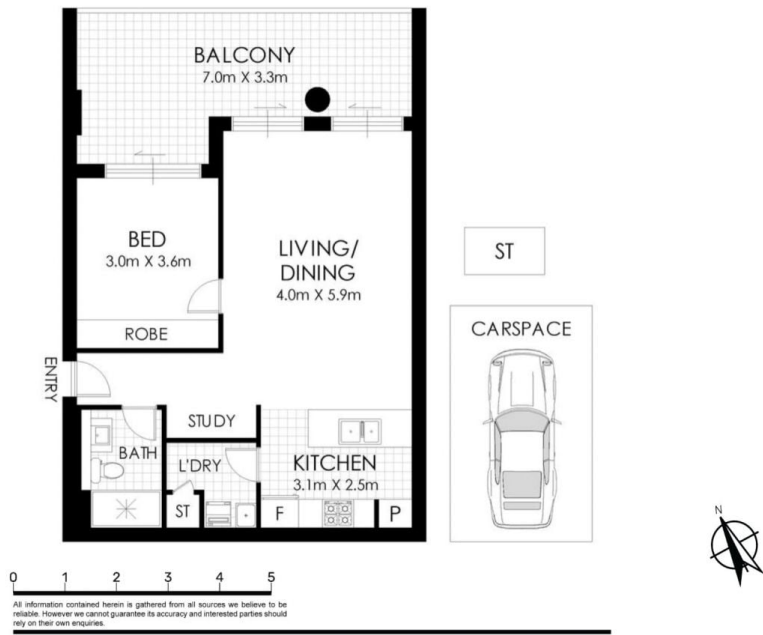
- ? Expansive living & dining area flows seamlessly to a large Northeast facing entertainer sized alfresco balcony through floor-to-ceiling sliding glass doors.
- ? Desirable corner position with a range of aspects providing an abundance of natural light.
- ? One bright & spacious bedroom with built-in wardrobe.

[For full version visit the website](https://www.onespaceproperty.com.au/sale/nsw/inner-west/wentworth-point/residential/unit/7672369)

Type : Unit
Building Size : 89 sqm
View : <https://www.onespaceproperty.com.au/sale/nsw/inner-west/wentworth-point/residential/unit/7672369>



John (junjie) Zhu
0292678810



1310/13 Verona Dr, Wentworth Point, NSW, 2127