

1301/13 Verona Drive Wentworth Point NSW

1 1 1

One Bedroom plus Study apartment with swimming pool and gym, this apartment is situated, with only meters away from the Bennelong Bridge which links both Wentworth Point and Rhodes together. This is a great opportunity, to be a part of a waterside community, retail shopping, restaurants, amenities transport, ferries close by.

Type : Apartment

View : <https://www.onespaceproperty.com.au/lease/nsw/inner-west/wentworth-point/residential/apartment/7784074>

Apartment Features:

- ? Spacious bedrooms with built-ins
- ? Modern tiled bathroom
- ? Gourmet kitchen
- ? Open floor plan living
- ? Split system Air con
- ? Internal Laundry



Sharon (si) Shen
0292678810

[For full version visit the website](https://www.onespaceproperty.com.au)

the
ADDRESS

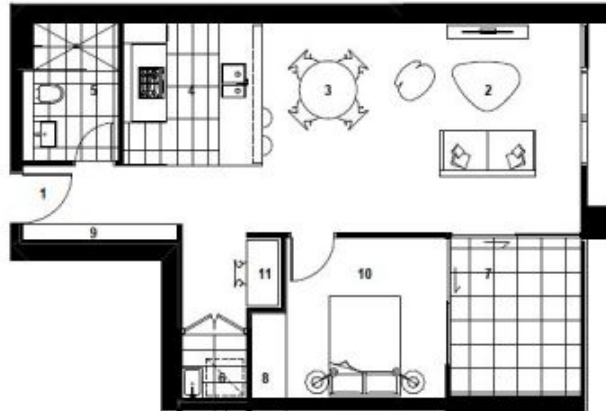
WENTWORTH POINT

SAVANNAH

APARTMENT B13.01

1 Bed / 1 Bath

Internal Area 57 sqm
External Area 7 sqm
Total Area 64 sqm



Level B3
0 1 2 3 M N

KEY

- | | |
|-------------|------------|
| 01 Entry | 07 Balcony |
| 02 Living | 08 Robe |
| 03 Dining | 09 Store |
| 04 Kitchen | 10 Bedroom |
| 05 Bathroom | 11 Utility |
| 06 Laundry | |

1800 333 818

TheAddressApartments.com.au