



615/13 Verona Drive Wentworth Point NSW

1 1 1

This cozy one-bedroom apartment is superbly positioned just 18 kilometres from the heart of Sydney's CBD within the renowned "Savannah" complex, a prestigious development by Sekisui House, a highly respected Japanese community developer. Offering a truly luxurious lifestyle, the complex provides residents with access to a range of exceptional resort-style amenities, including a well-equipped gym, an indoor swimming pool, BBQ facilities, and the convenience of an on-site Building Manager, exclusively available to "Savannah" residents.

Nestled amidst serene parklands and along the picturesque shores of Homebush Bay, this modern luxury apartment promises a tranquil and contemporary living experience for

[For full version visit the website](https://www.onespaceproperty.com.au)

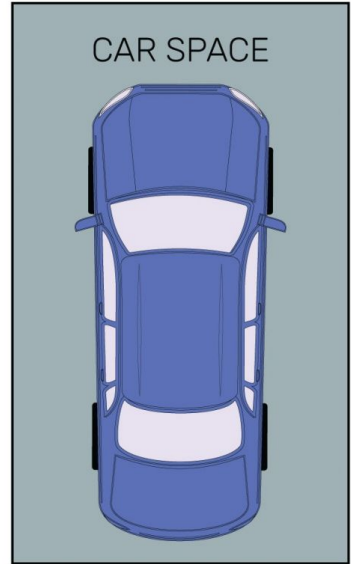
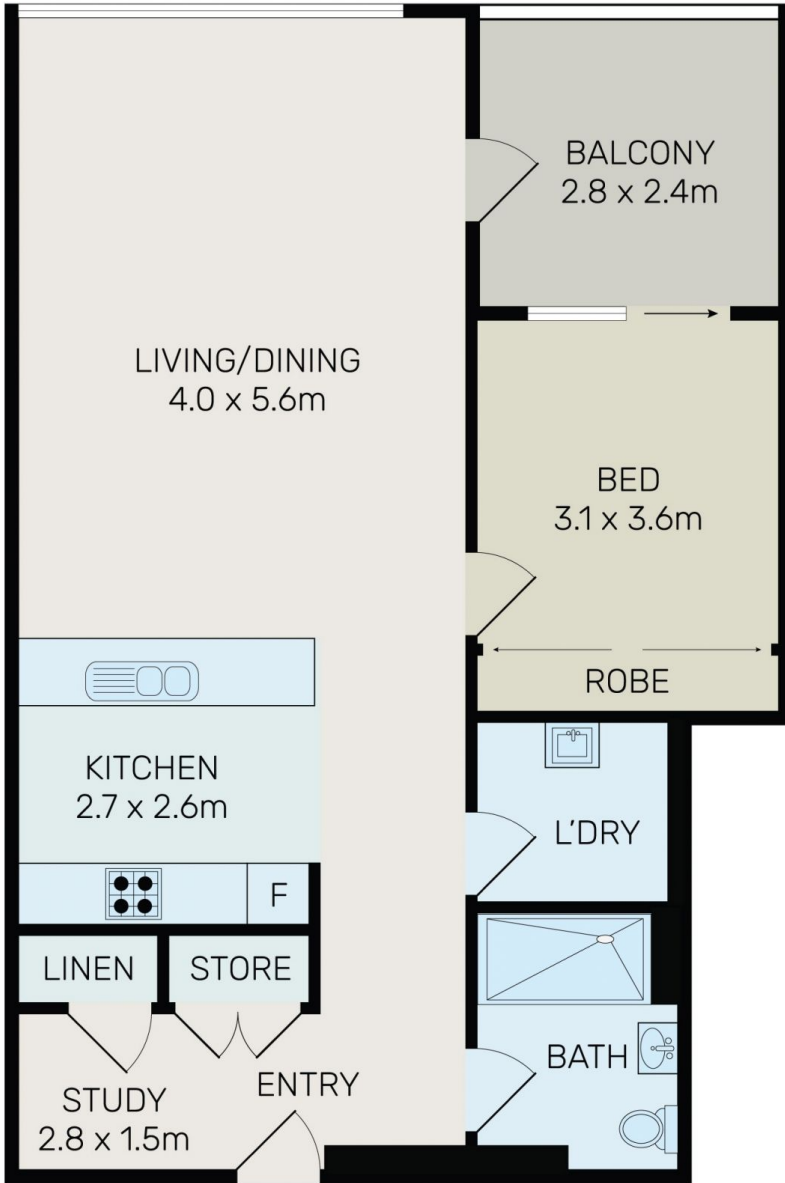
Type : Unit
Building Size : 82 sqm
View : <https://www.onespaceproperty.com.au/sale/nsw/inner-west/wentworth-point/residential/unit/7802338>



John (junjie) Zhu
0292678810



Jeff (kwok Fu) Chau
0292678810



All information contained herein is gathered from all sources we believe to be reliable. However we cannot guarantee its accuracy and interested parties should rely on their own enquiries.



615/13 Verona Drive, Wentworth Point