



## 702/17 Verona Drive Wentworth Point NSW

1 1 1

Conveniently located just 18 kilometres from Sydney CBD, this stunning northeast facing one-bedroom apartment is situated in the iconic "Savannah" complex built by Sekisui House, one of Japan's most respected community developers offering highly luxurious lifestyle and fantastic resort style amenities including gym, indoor swimming pool, BBQ facilities and dedicated onsite Building Manager which are exclusively available to the residents in "Savannah".

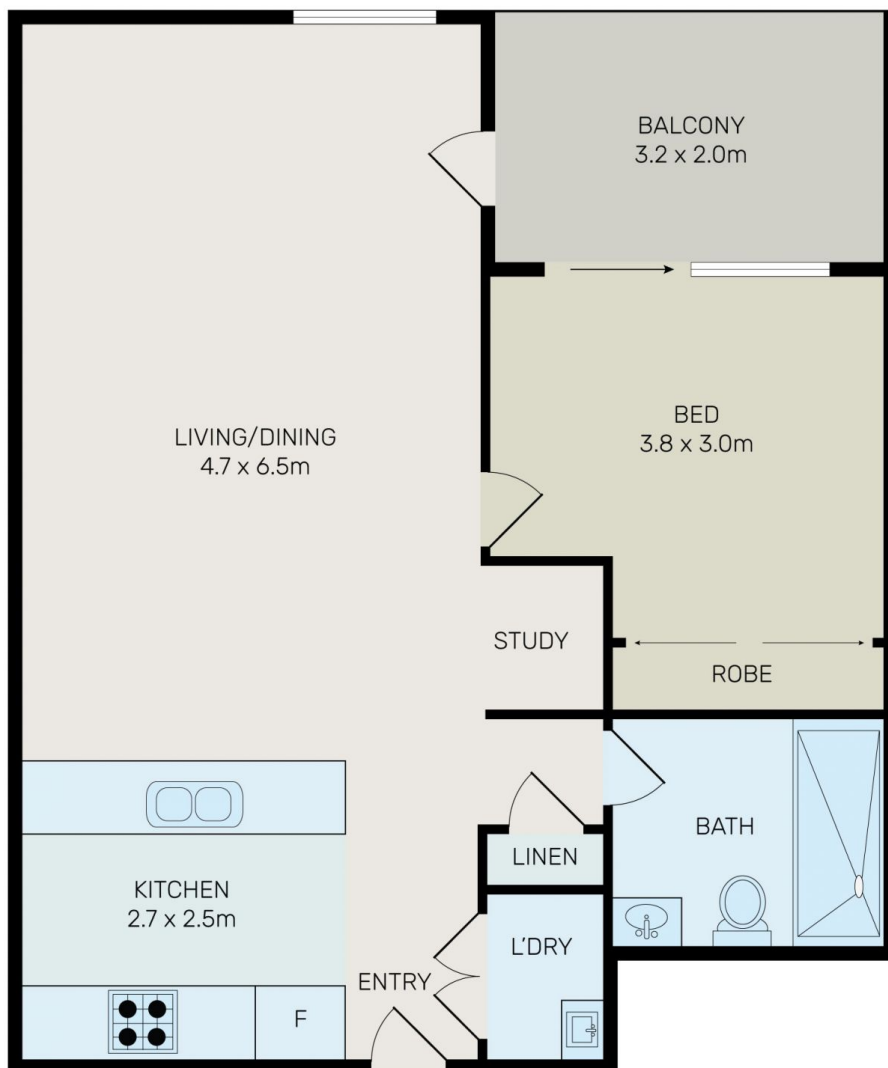
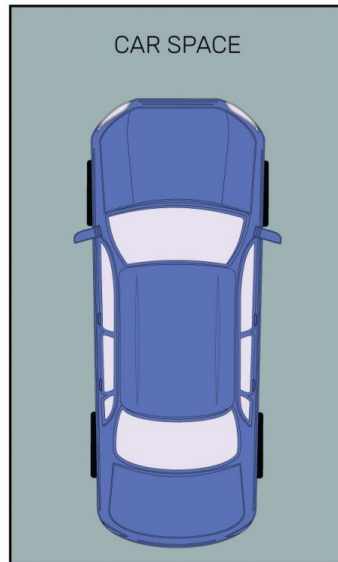
Surrounded by parklands and embraced by the shores of Homebush Bay, this contemporary luxury apartment offers a great tranquil and contemporary lifestyle to its potential buyers with only moments' walking to Marina Square Shopping Centre, Wentworth Point Public School, local

[For full version visit the website](https://www.onespaceproperty.com.au)

**Type** : Apartment  
**Building Size** : 76 sqm  
**View** : <https://www.onespaceproperty.com.au/sale/nsw/inner-west/wentworth-point/residential/apartment/7819118>



**John (junjie) Zhu**  
0292678810



All information contained herein is gathered from all sources we believe to be reliable. However we cannot guarantee its accuracy and interested parties should rely on their own enquiries.

702/17 Verona Drive, Wentworth Point