



1213/43-45 Wilson Street Botany NSW

2 🛏 2 🚿 2 🚗

This contemporary 2-bedroom apartment is a luxurious retreat, seamlessly blending modern sophistication with the inviting comfort of a spacious home.

Set over levels 2 & 3 of the prestigious "Park Grove" complex, it commands a stunning view of the nearby park, providing a serene and picturesque backdrop.

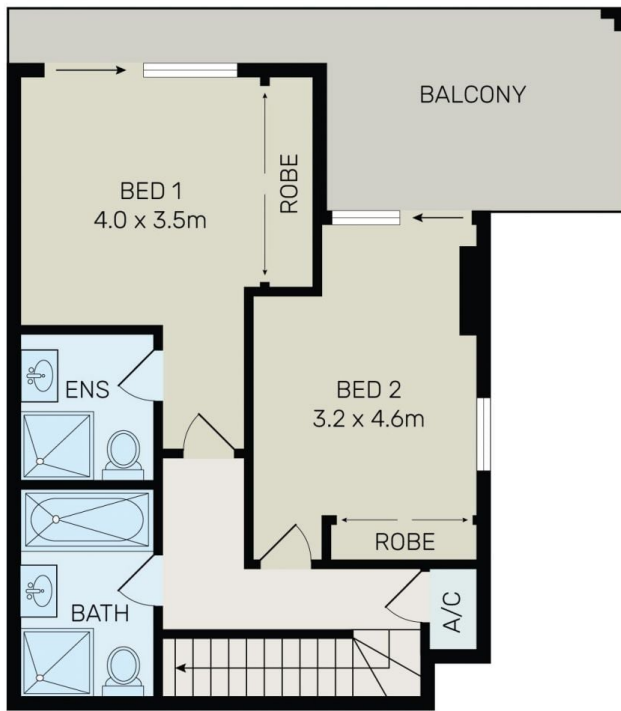
The prime location, just 7 kilometres from the heart of Sydney CBD, ensures convenient access to the city's vibrant offerings while offering a peaceful escape from the urban hustle. The carefully designed interior reflects a perfect fusion of elegance and warmth, creating an atmosphere that feels both upscale and welcoming.

[For full version visit the website](https://www.onespaceproperty.com.au)

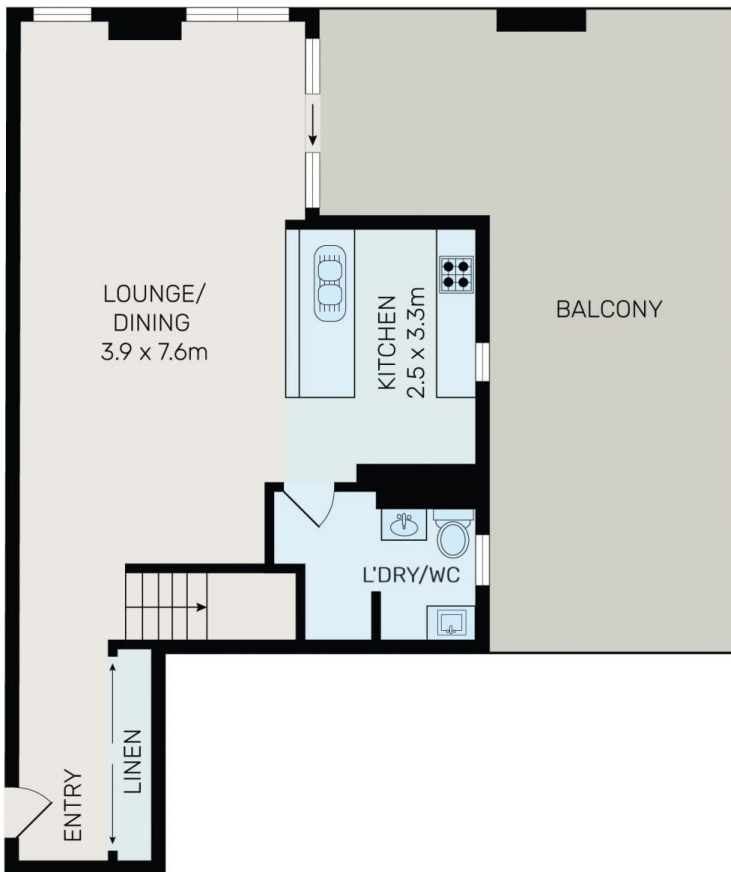
Type : Unit
Building Size : 188 sqm
View : <https://www.onespaceproperty.com.au/sale/nsw/eastern-suburbs/botany/residential/unit/7826046>



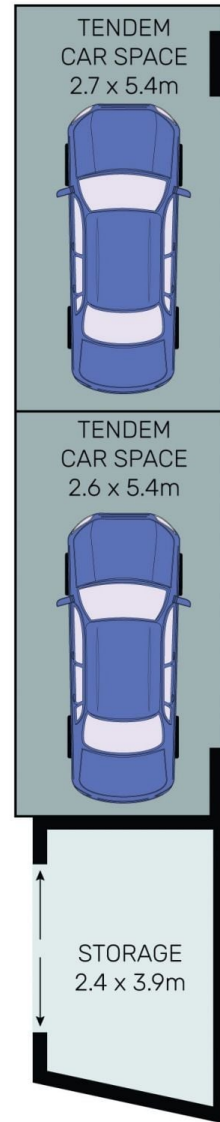
John (junjie) Zhu
0292678810



UPPER LEVEL



LOWER LEVEL



All information contained herein is gathered from all sources we believe to be reliable. However we cannot guarantee its accuracy and interested parties should rely on their own enquiries.



1213/43-45 Wilson Street, Botany