



1207A/339 Sussex Street Sydney NSW

2 🛏 2 🚿 1 🚗

Nestled within the prestigious Emporio Apartments, this residence epitomizes modern luxury living. The building boasts a suite of amenities including a fully equipped gym, pool, spa, and a modern entry foyer with concierge services. Located in the heart of Sydney's CBD, residents enjoy the vibrancy of city living while relishing the tranquility of their upscale abode.

Situated in the bustling heart of Sydney's CBD, this apartment offers unparalleled convenience. With a myriad of shops, restaurants, and cafes at your doorstep, along with proximity to Central Station, Darling Harbour, QVB, and Hyde Park, every urban convenience is within easy

[For full version visit the website](https://www.onespaceproperty.com.au)

Type : Apartment

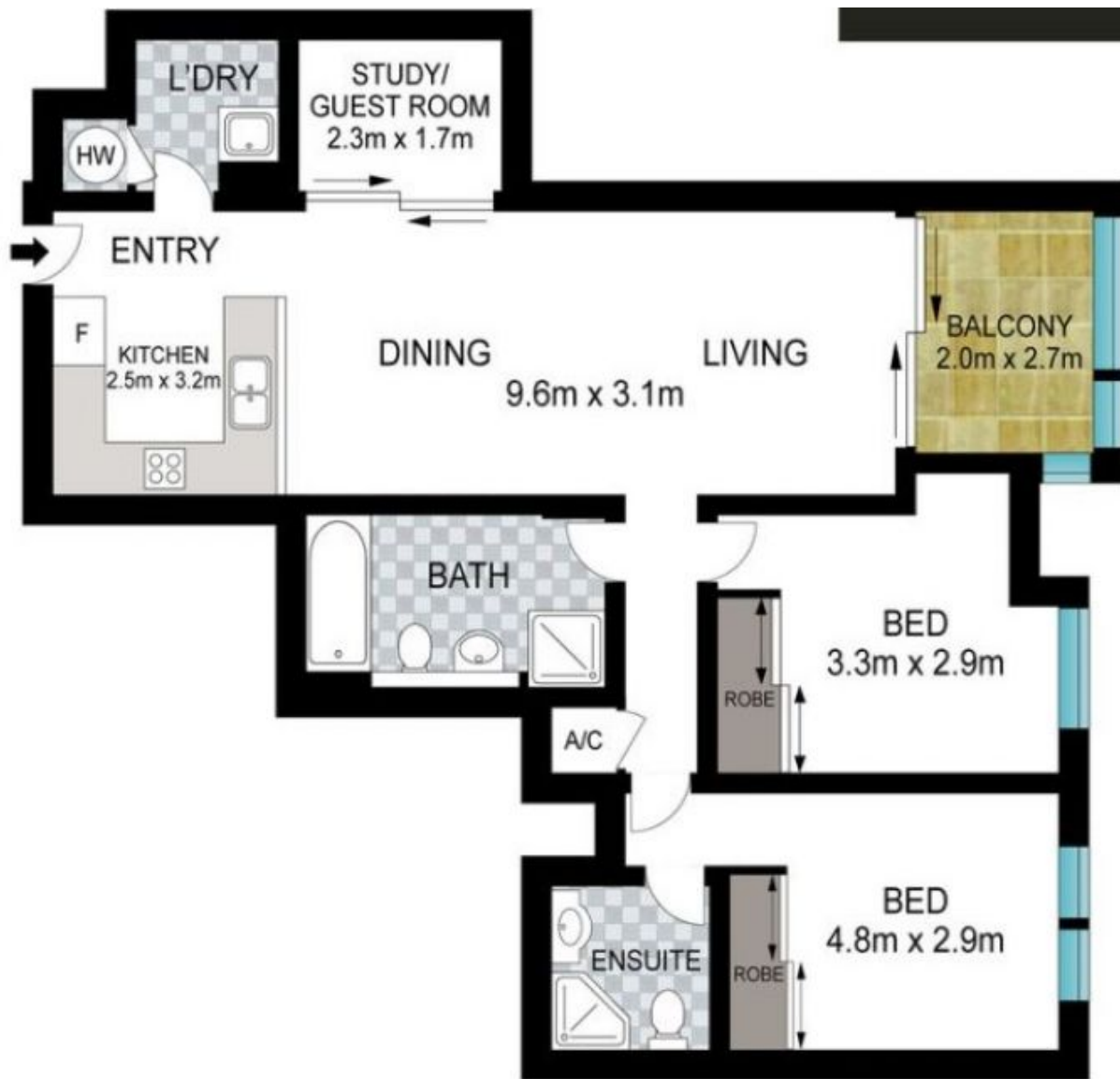
View : <https://www.onespaceproperty.com.au/lease/nsw/sydney-city/sydney/residential/apartment/785543>
1



Rebecca Sun
0292678810



Andrew Bow
0459 824 158



TWELFTH FLOOR



LEVEL B5



Scale in metres. Indicative only. Dimensions are approximate. All information contained herein is gathered from sources we believe to be reliable. However we cannot guarantee its accuracy and interested persons should rely on their own enquiries.



A1207/339 Sussex Street, Sydney