



109/336-346 Sussex Street Sydney NSW

2 1 1

Embrace city living at its finest with this well-configured 2-bedroom apartment, ideally situated just a stroll away from Darling Harbour, QVB, and Sydney's major landmarks.

Enjoy easy access to trains, buses, and shops right at the heart of the CBD. Take a leisurely walk to the vibrant culinary hubs of George Street and Darling Harbour, relishing the utmost convenience and practicality offered by this city home.

- Open-plan living and dining area for versatile use
- Generous size kitchen has stainless steel appliances
- Spacious bedrooms include built-ins

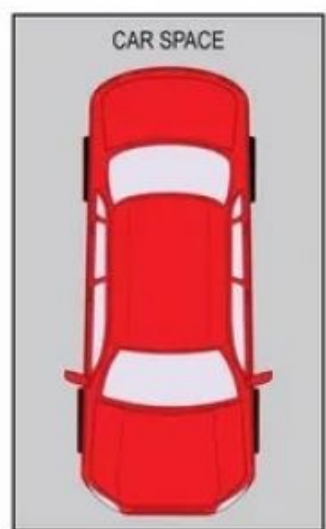
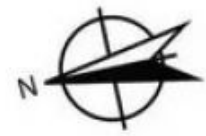
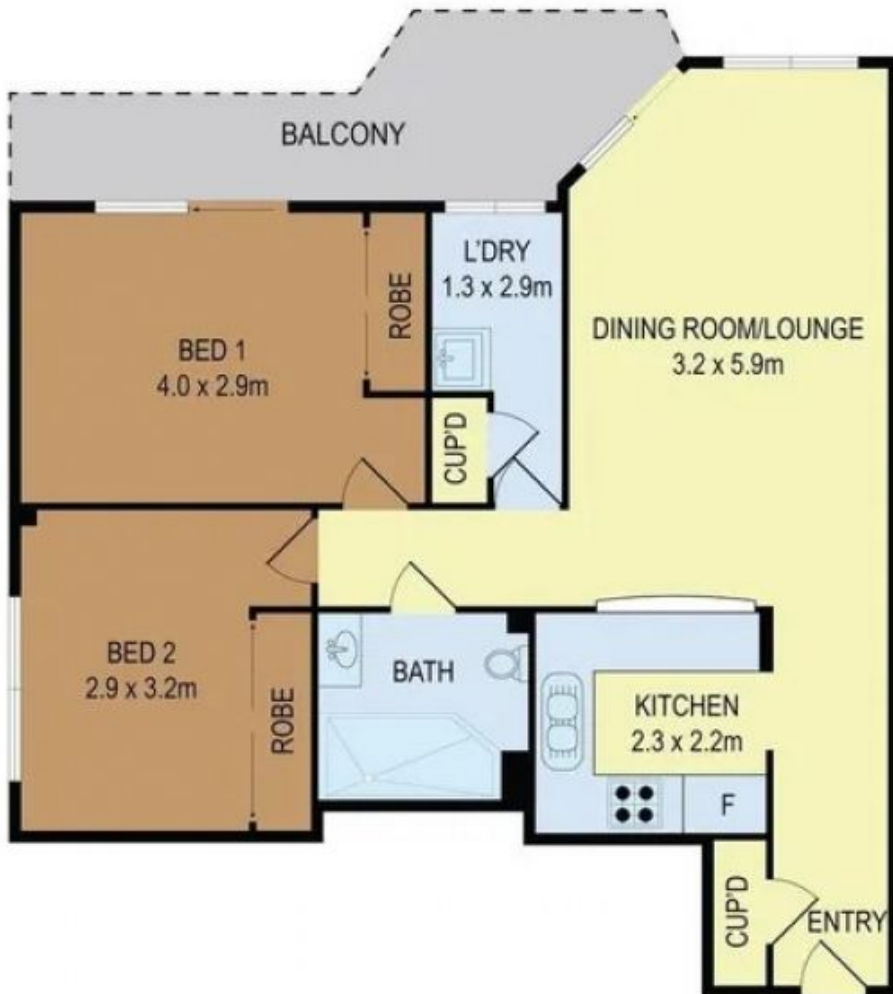
[For full version visit the website](https://www.onespaceproperty.com.au/lease/nsw/sydney-city/sydney/residential/apartment/7866948)

Type : Apartment

View : <https://www.onespaceproperty.com.au/lease/nsw/sydney-city/sydney/residential/apartment/7866948>



Andrew Bow
0459 824 158



(NOT IN POSITION)



All information contained herein is gathered from all sources we believe to be reliable. However we cannot guarantee its accuracy and interested parties should rely on their own enquiries.