



## 1118/1 Steam Mill Lane Haymarket NSW

1 1

Discover the epitome of urban sophistication in this meticulously designed one-bedroom apartment located on Level 11 of the esteemed St Leon Building. Boasting a near-new development, this residence offers an unparalleled blend of luxury, convenience, and style.

**Type** : Apartment

**View** : <https://www.onespaceproperty.com.au/lease/nsw/sydney-city/haymarket/residential/apartment/7877376>

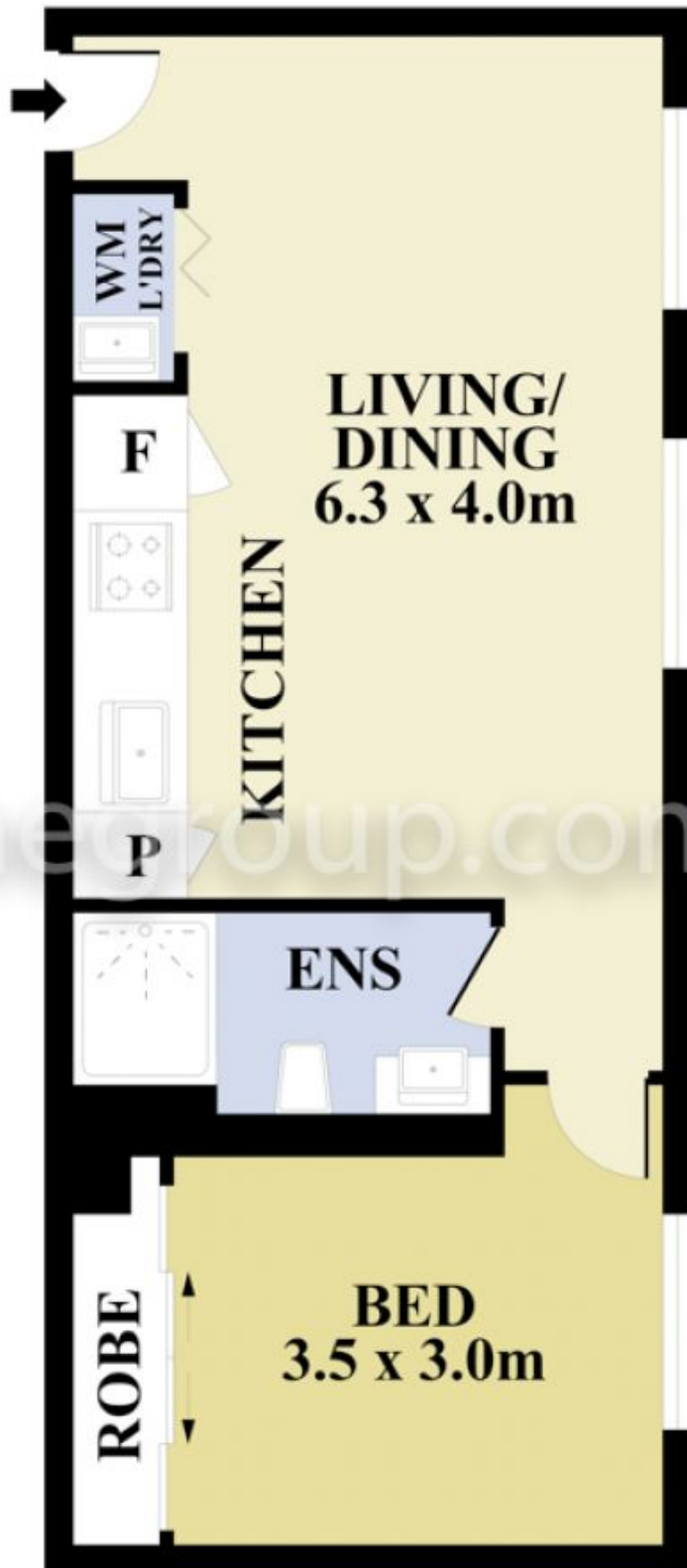
### Key Features:

- Timber flooring throughout living space for warmth and sophistication.
- Generous bedroom with stylish built-in wardrobe for ample storage.
- Gourmet gas kitchen with Miele appliances, dishwasher,



**Andrew Bow**  
0459 824 158

[For full version visit the website](#)



Floor Plan measurements are approximate and are for illustrative purposes only. While we cannot doubt the floor plans accuracy, we make no guarantee, warranty or representation as to the accuracy and completeness of the floor plan



1118/1 Steam Mill Lane, Haymarket