



3044/2E Porter Street Ryde NSW

1 1 1

This beautiful one-bedroom apartment is perfectly positioned on level 3 of the renowned Crowle Estate Complex in prime location in Ryde. Embracing all the essentials of an ideal apartment lifestyle and architecturally designed with liveability mind, this beautiful Northwest facing 1 bedroom apartment brings you effortless and contemporary living at its best - breezy, bright and blissful.

Close to all amenities including waterfront foreshores, choice of quality schools, local dining/cafes and Shepherds Bay Shopping Centre. Within few minutes walk to Meadowbank train station, bus stops and Ferry Wharf. Only short drive to Top Ryde Shopping Centre, Rhodes, Olympic Park, Eastwood, Homebush DFO, Sydney

[For full version visit the website](https://www.onespaceproperty.com.au)

Type : Apartment

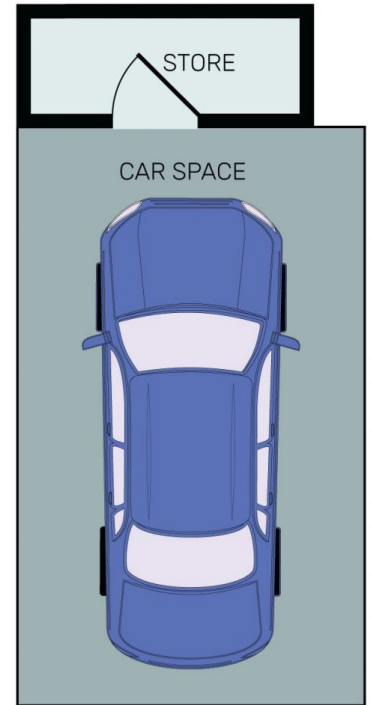
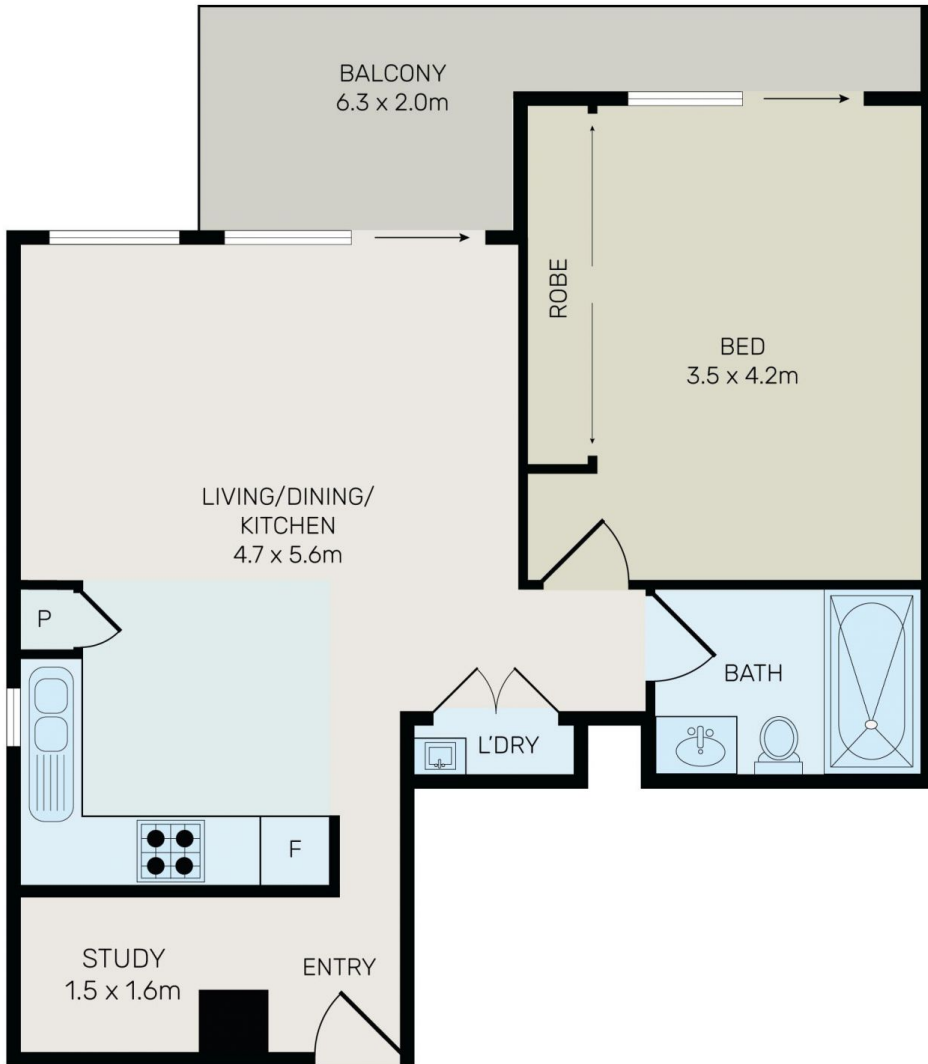
View : <https://www.onespaceproperty.com.au/sale/nsw/northern-suburbs/ryde/residential/apartment/7894085>



John (junjie) Zhu
0292678810



Elaine Chu
0292678810



All information contained herein is gathered from all sources we believe to be reliable. However we cannot guarantee its accuracy and interested parties should rely on their own enquiries.



3044/2E Porter Street Ryde