



58/94 Dalmeny Avenue Rosebery NSW

2 2 1

Located on the ground level of the architecturally designed renowned "Zeta" complex in Rosebery, this light filled ultra-contemporary private 2-bedroom apartment incorporates both the ultimate inner city living with privacy and sophisticated interior which offers highly luxurious and convenient lifestyle to its future owners.

Centrally located only 8 kilometres from Sydney CBD, this beautiful apartment is within walking distance to Green Square train station, green square town center, local supermarket, cafes and restaurants. UNSW, Sydney University, Taylors College, Bondi junction and Coogee are all within short driving distance.

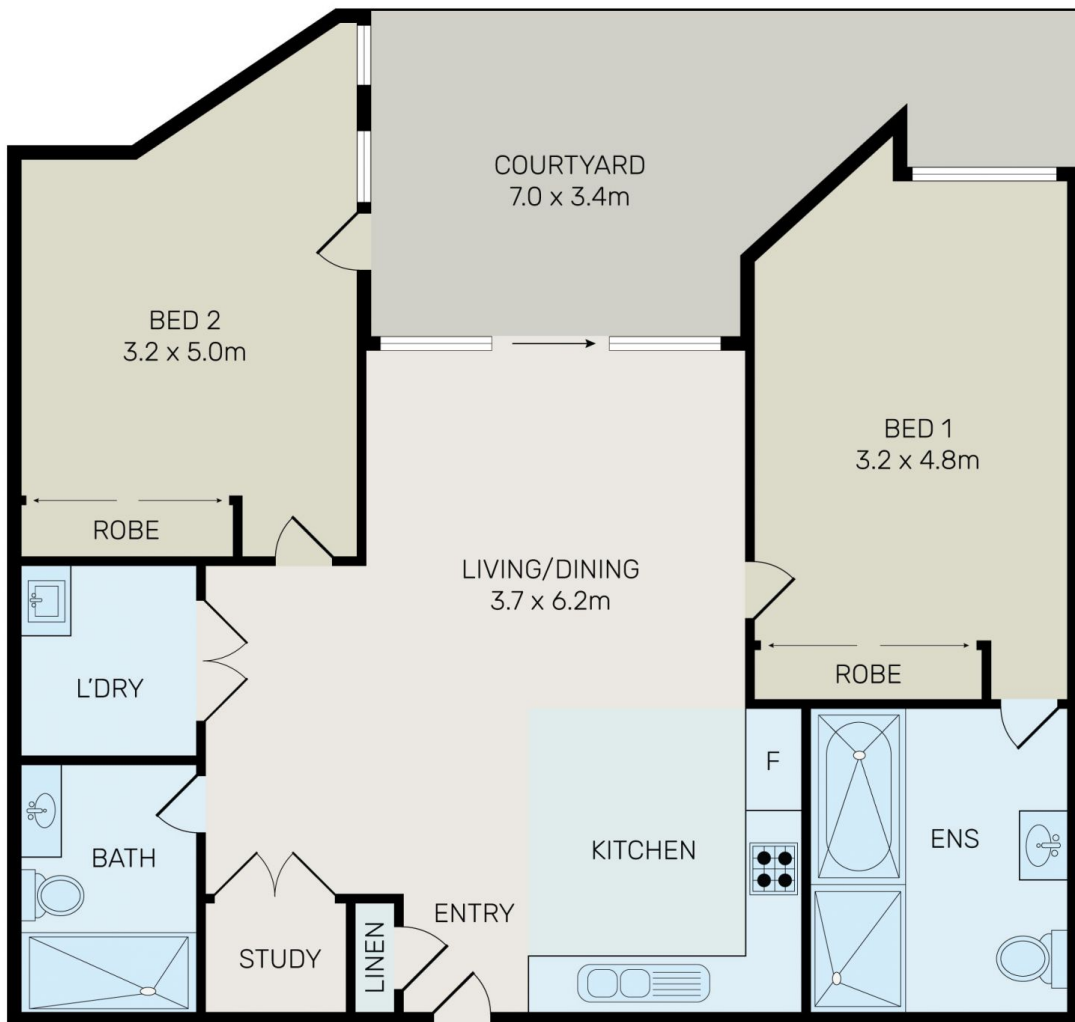
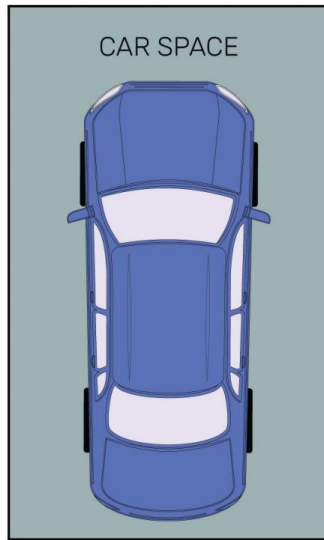
[For full version visit the website](https://www.onespaceproperty.com.au)

Type : Apartment

View : <https://www.onespaceproperty.com.au/lease/nsw/eastern-suburbs/rosebery/residential/apartment/7896406>



Andrew Bow
0459 824 158



All information contained herein is gathered from all sources we believe to be reliable. However we cannot guarantee its accuracy and interested parties should rely on their own enquiries.



G58/94 Dalmeny Avenue, Rosebery