



## 4/12-14 Ann Street Lidcombe NSW

1 1 1

This spacious & courtyard 1-bedroom of total 108sqm apartment is located at ground level in the Tosca building as well as one of the largest layouts in the building as well as ample storage space. This 5-story boutique complex is only steps away from the shopping mall, local cafes & restaurants, and Lidcombe schools & train station.

**Type** : Apartment

**Price** : \$ 525,000

**View** : <https://www.onespaceproperty.com.au/sale/nsw/parramatta/lidcombe/residential/apartment/7902872>

### Features Of the Apartment

- Split Air-condition in living room & Sun Filled lounge/dining space
- Outdoor flow onto an inviting 40sqm approx. entertaining & street access courtyard
- Well-known European kitchen as well as stone benchtops

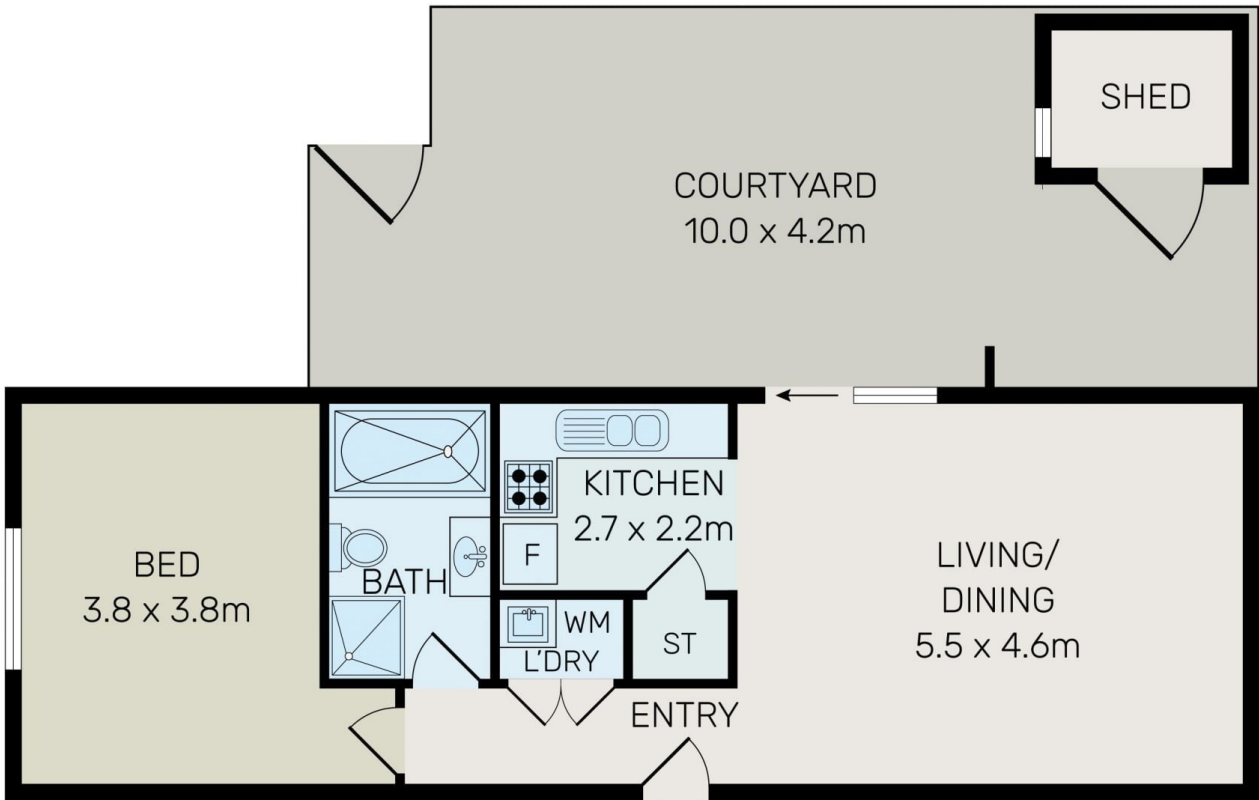
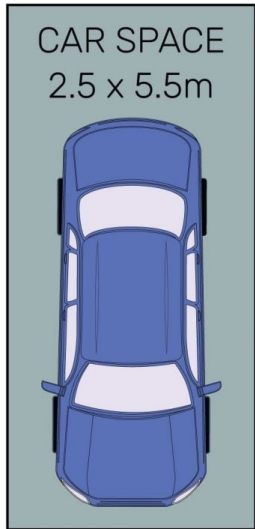
[For full version visit the website](https://www.onespaceproperty.com.au)



**Jeff (kwok Fu) Chau**  
0292678810



**John (junjie) Zhu**  
0292678810



All information contained herein is gathered from all sources we believe to be reliable. However we cannot guarantee its accuracy and interested parties should rely on their own enquiries.



4/12-14 Ann Street, Lidcombe