



## 2801/14 Hill Road Wentworth Point NSW

2 2 2

Delivering the pinnacle of apartment living, this stylish residence commands a north-west aspect with spectacular views over Olympic Park and Parramatta. Cutting-edge design composes a stylish haven in the sky, offering easy outdoor flow from living space and the bedroom. A complete lifestyle is designed to extend beyond your apartment, with the Podium on level 4 providing pet-friendly green space, and nearby shopping centres offering a range of amenities and dining options. Close to Wentworth Point Public School, the position invites you to tap into every resource Olympic Park has to offer, including fitness centres, bus and ferry services.

\* Full-height glazing for optimum natural light, study setting,

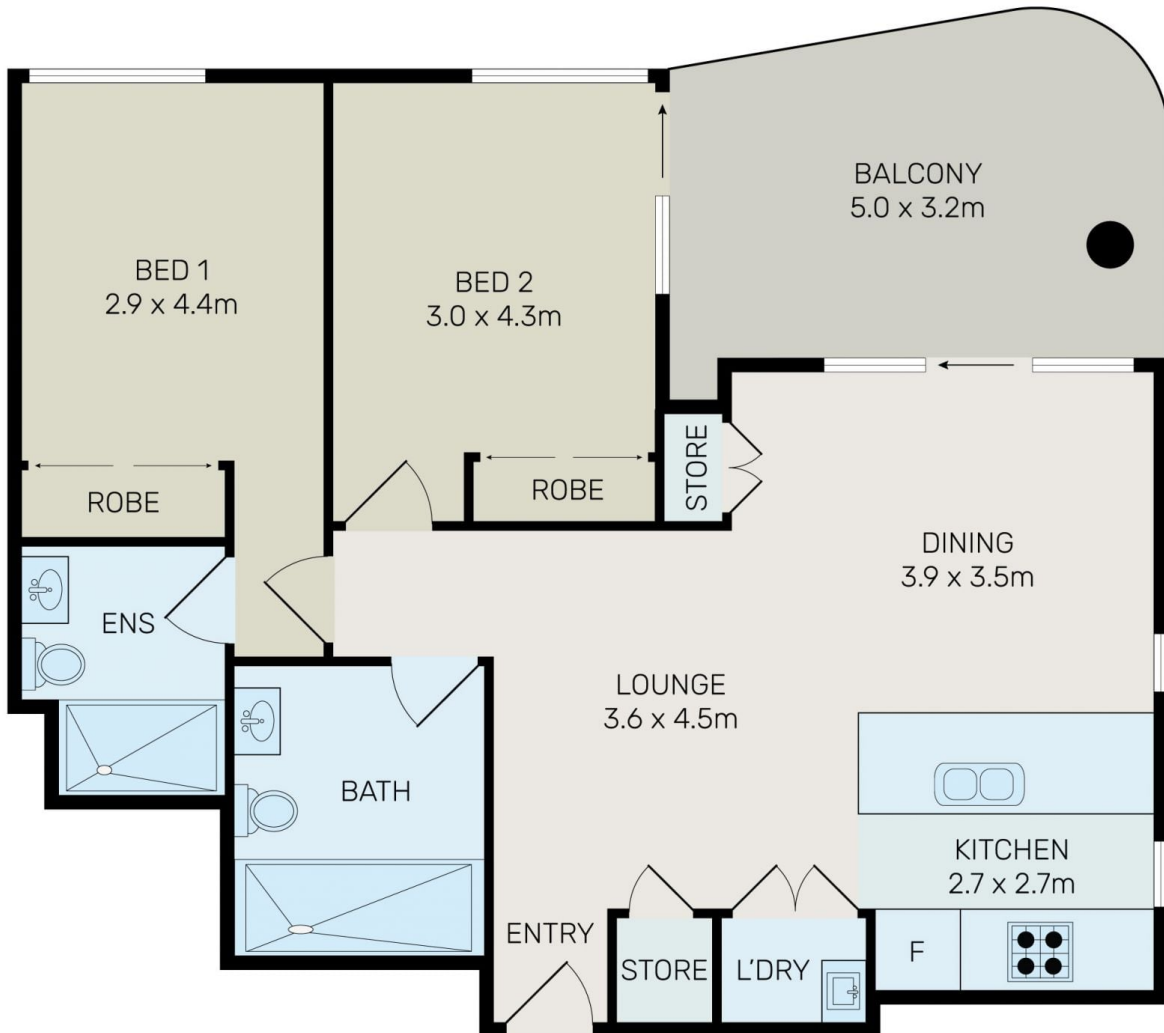
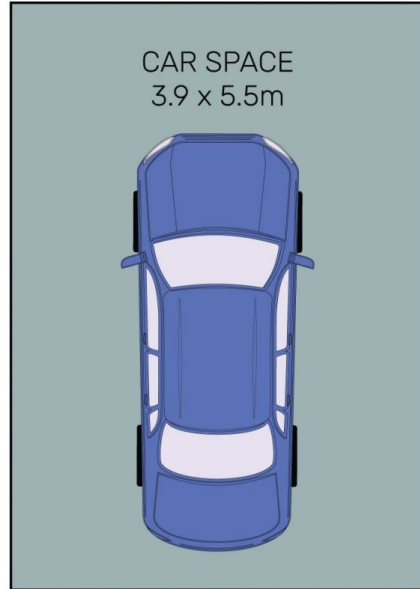
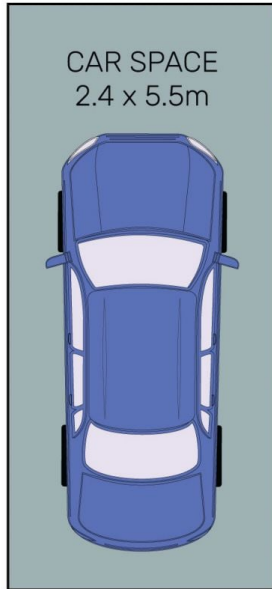
[For full version visit the website](#)

**Type** : Apartment

**View** : <https://www.onespaceproperty.com.au/lease/nsw/inner-west/wentworth-point/residential/apartment/7906984>



**Sharon (si) Shen**  
0292678810



All information contained herein is gathered from all sources we believe to be reliable. However we cannot guarantee its accuracy and interested parties should rely on their own enquiries.



**2801/14 Hill Road, Wentworth Point**