



## G01/5 O'Dea Avenue Zetland NSW

2 2 1

The two-bedroom apartment in the sought-after Emerald Park complex is now available for rent, offering a luxurious modern living experience. Situated within a vibrant community, residents will have access to an array of amenities, including five pools, including a resort-style grotto, and a rooftop pool with breathtaking city views.

This exquisite apartment features:

1- Hardwood Floors: Enjoy the warmth and elegance of hardwood flooring throughout the living spaces, adding a touch of sophistication to the interior.

2- Stone Benchtops: The kitchen is adorned with sleek

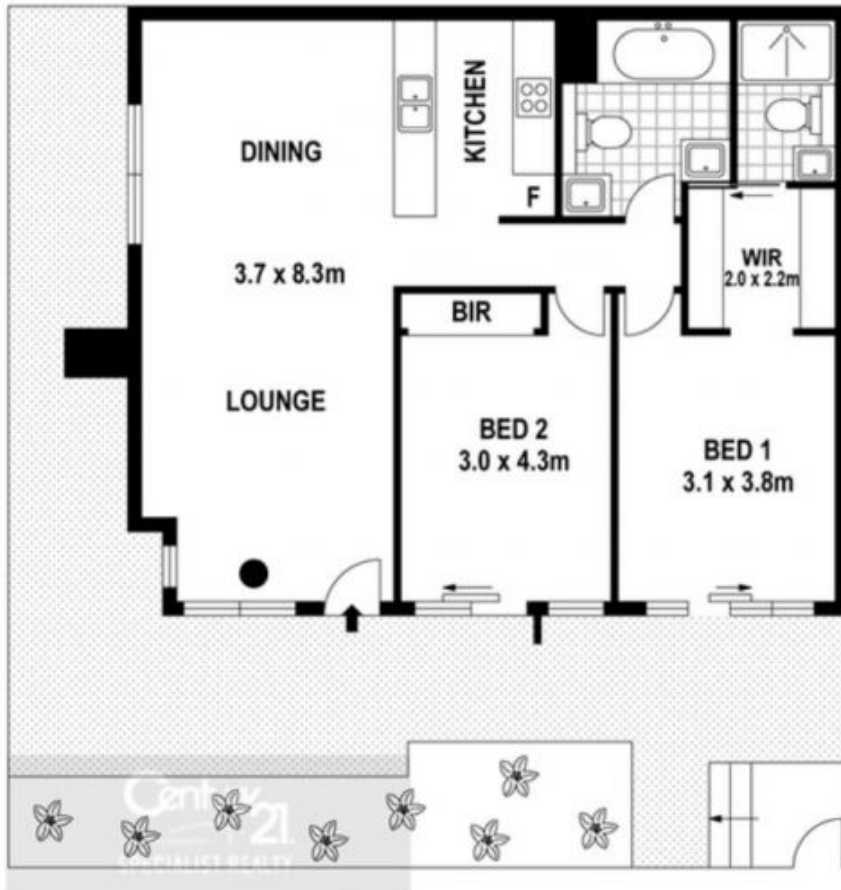
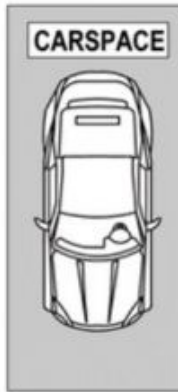
[For full version visit the website](https://www.onespaceproperty.com.au)

**Type** : Apartment

**View** : <https://www.onespaceproperty.com.au/lease/nsw/eastern-suburbs/zetland/residential/apartment/7922420>



**Andrew Bow**  
0459 824 158



## G01/5 O'Dea Avenue, Zetland

Disclaimer: Floor plans and site plans are intended as a guide only. They are not part of any legal document or title and are subject to errors, omission, and inaccuracies and should not be used as reference. Sizes and dimensions are approximate only. Interested parties should make their own enquiries.

FLOOR PLAN BY: TOUCHIN MEDIA