



## 103/12 Nuvolari Place Wentworth Point NSW

1 1 1

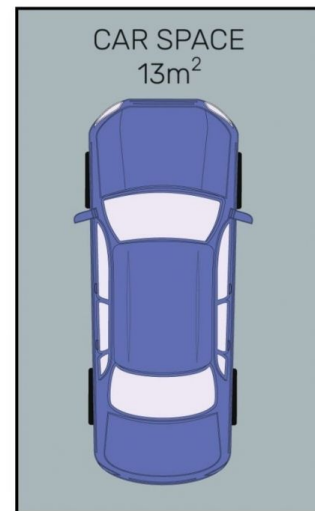
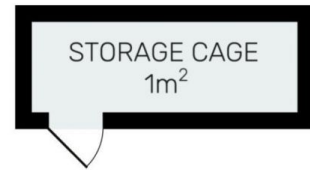
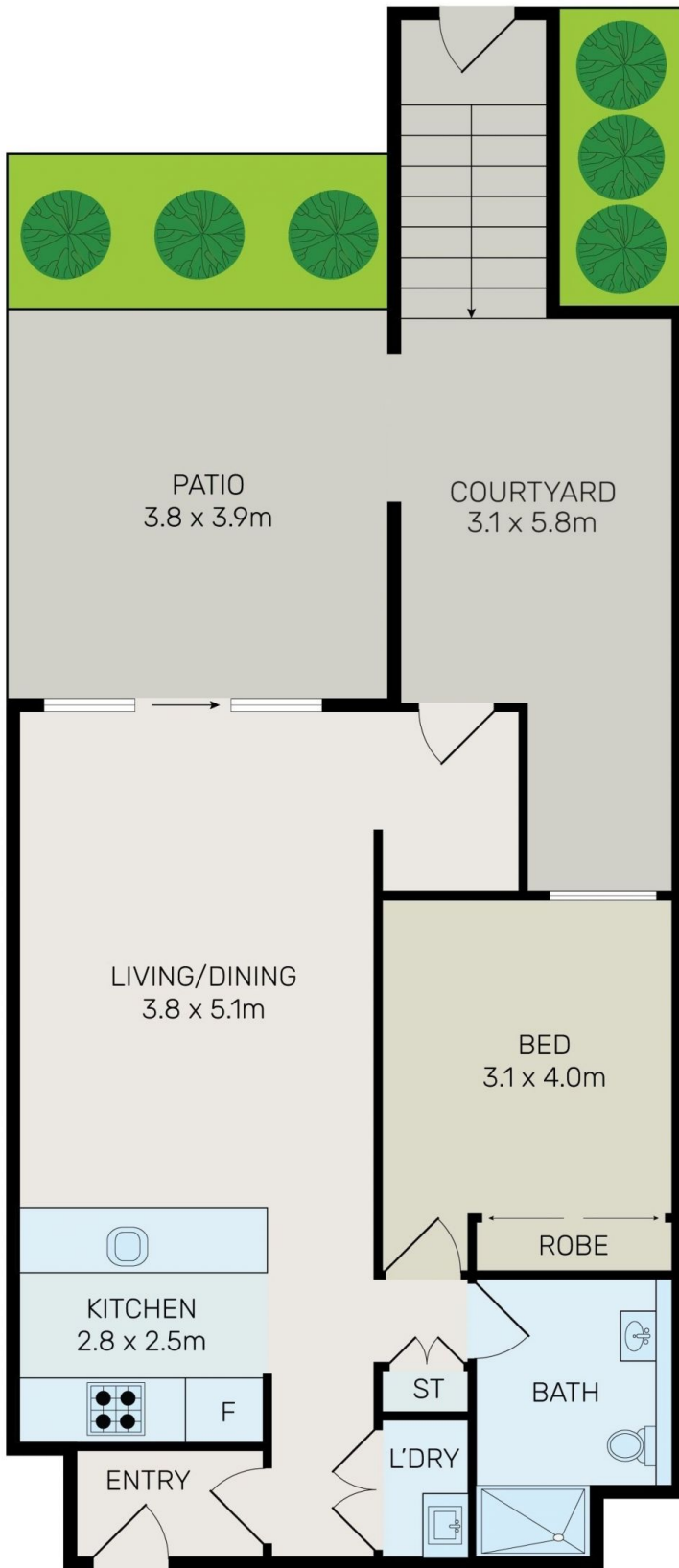
This spacious light-filled one bedroom apartment in the "Alora" complex presents an exciting opportunity for both homeowners and investors in Wentworth Point. Its prime location offers easy access to essential amenities like The Piazza, The Promenade, Ferry Wharf, and Marina Square Shopping Centre, ensuring convenience for residents' daily needs and leisure activities. Wentworth Point Public School, local shops, cafes, and restaurants are all within reach, adding to the appeal of the area. Commuting is hassle-free with excellent transport links to the City and Parramatta, and the nearby Bennelong Bridge provides quick access to Rhodes, expanding accessibility options even further.

**Type** : Apartment  
**Price** : \$ 600,000  
**Building Size** : 105 sqm  
**View** : <https://www.onespaceproperty.com.au/sale/nsw/inner-west/wentworth-point/residential/apartment/7936309>

[For full version visit the website](https://www.onespaceproperty.com.au)



**John (junjie) Zhu**  
0292678810



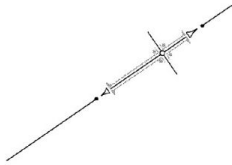
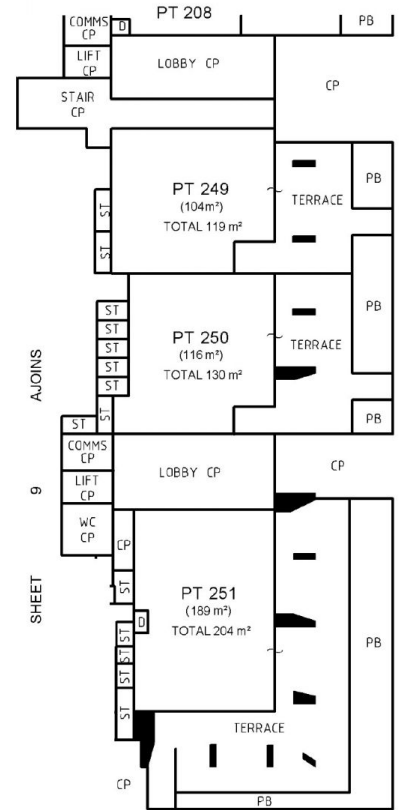
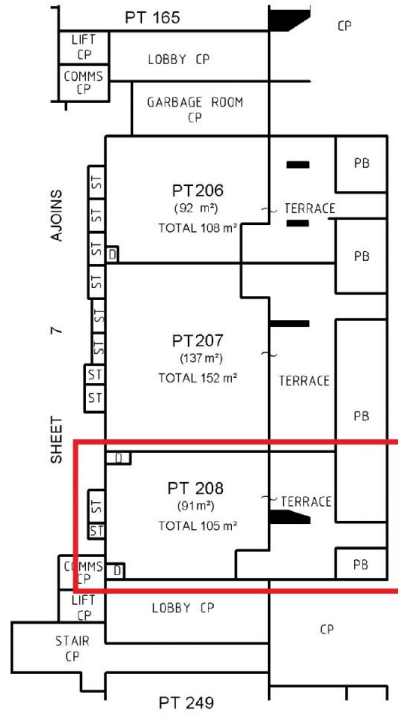
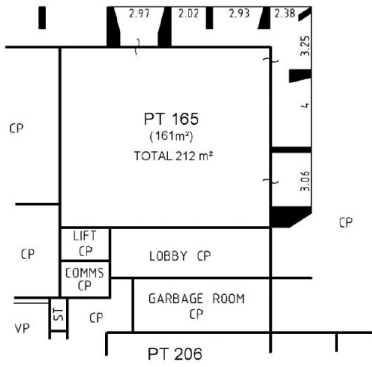
All information contained herein is gathered from all sources we believe to be reliable. However we cannot guarantee its accuracy and interested parties should rely on their own enquiries.



# 103/12 Nuvolari Place, Wentworth Point

:R585869 /Doc:SP 0088730 P /Rev:19-Nov-2013 /NSW LRS /Fgs:ALL /Prt:27-Mar-2021 21:48 /Seq:22 of 37  
 Office of the Registrar-General /Sic:8A1G10ab1 /Ref:

**LEVEL 1  
BUILDING C**



- CP ~ COMMON PROPERTY
- D ~ DUCT (COMMON PROPERTY)
- PB ~ PLANTER BOX (COMMON PROPERTY)
- ST ~ STORAGE

THE STRATUM OF THE TERRACES ARE LIMITED IN HEIGHT TO 2.5 METRES ABOVE THE UPPER SURFACE OF THEIR RESPECTIVE BASE, EXCEPT WHERE COVERED

Surveyor: MICHAEL RODERICK LOCKLEY  
 Surveyor Ref: 23323-40071SP  
 Subdivision No: SC1800  
 Lengths are in metres. Reduction Ratio 1:200

Registered:  
 23.10.2013

SP88730

