



## 318/10 Half Street Wentworth Point NSW

1 1 1

Situated a mere 18 kilometres from Sydney's CBD, this modern one-bedroom apartment in the esteemed "Savannah" complex, crafted by the renowned Sekisui House, epitomizes contemporary luxury living. Boasting a plethora of resort-style amenities including a gym, indoor swimming pool, BBQ facilities, elevated communal garden and onsite concierge service, residents are treated to a lifestyle of utmost comfort and convenience.

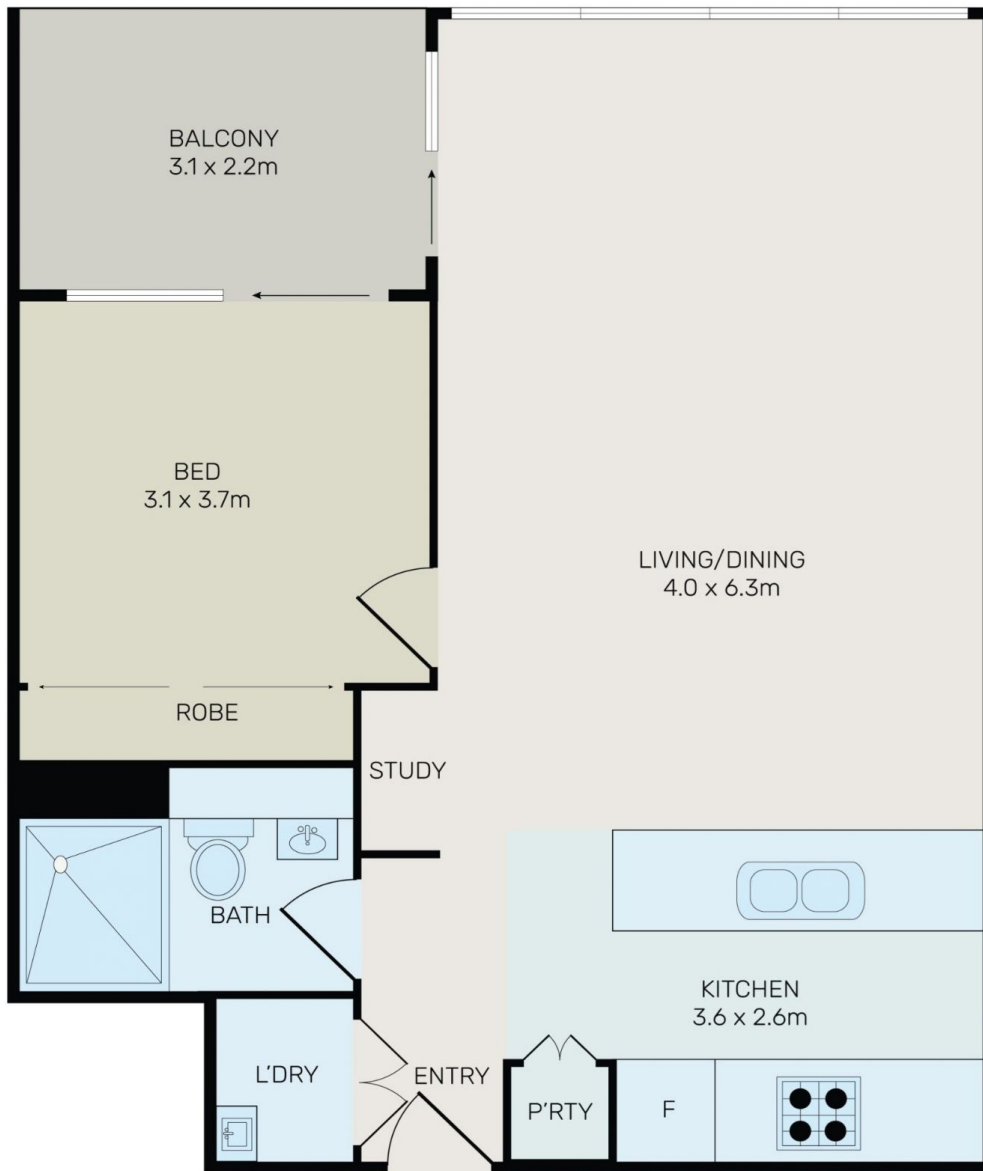
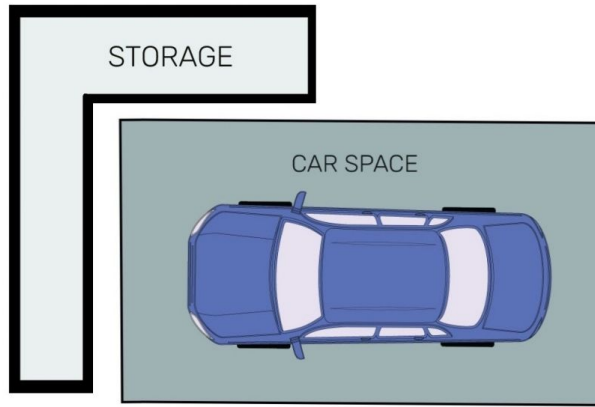
Surrounded by parklands and embraced by the shores of Homebush Bay, this contemporary luxury apartment offers a great tranquil and contemporary lifestyle to its potential buyers with only moments' walking to Marina Square Shopping Centre, Wentworth Point Public School, local

[For full version visit the website](https://www.onespaceproperty.com.au)

**Type** : Apartment  
**Building Size** : 77 sqm  
**View** : <https://www.onespaceproperty.com.au/sale/nsw/inner-west/wentworth-point/residential/apartment/7977507>



**John (junjie) Zhu**  
0292678810



All information contained herein is gathered from all sources we believe to be reliable. However we cannot guarantee its accuracy and interested parties should rely on their own enquiries.



# 318/10 Half Street, Wentworth Point