



A102/32 Alice Street Newtown NSW

2 2 1

Welcome to Industri, a modern boutique development in the most exciting and vibrant residential suburb Newtown which would set exceptional standards cross the board. Surrounded by restaurants, bars, theatres, clubs, coffee shops, shopping centers, hospitals and schools, incorporates both the ultimate inner city living with privacy and sophisticated interior.

Thanks to the thoughtful design by award-winning architect SJB, Industri is private and perfect designed to welcome in the sun and warm the heart which sets up a new benchmark in the Newtown area.

Features including:

Bright living space made through expansive floor to ceiling

[For full version visit the website](#)

Type : Apartment

View : <https://www.onespaceproperty.com.au/lease/nsw/inner-west/newtown/residential/apartment/8021058>



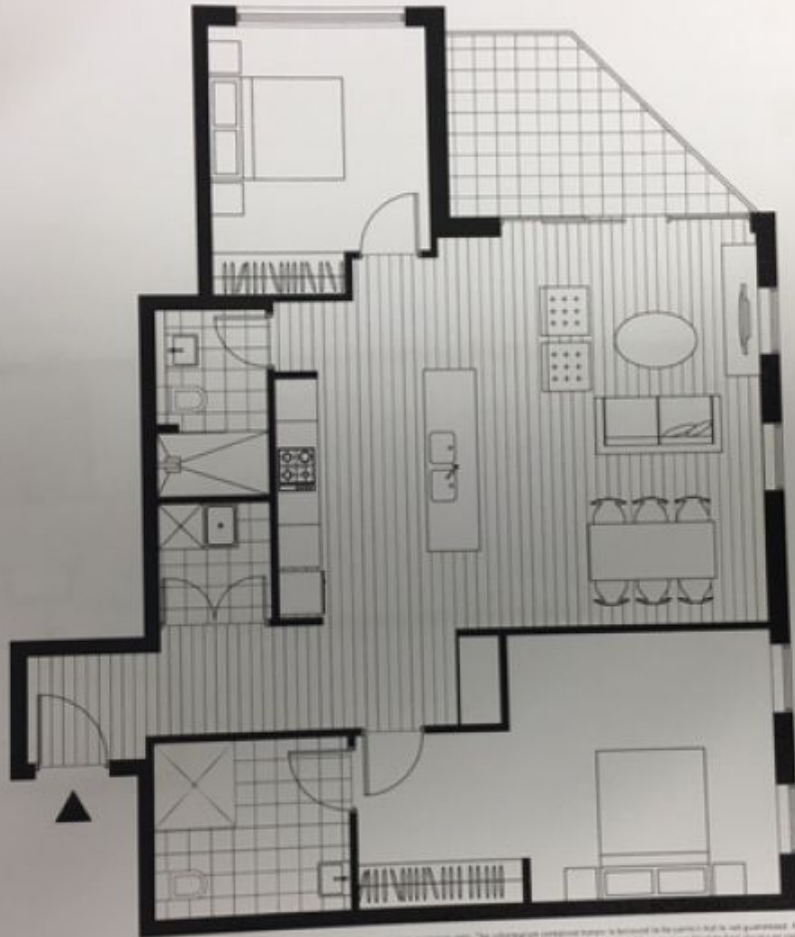
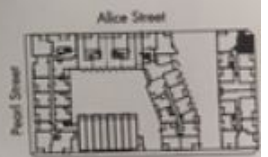
Andrew Bow
0459 824 158

EST. 2013
INDUSTRI
 APARTMENTS

BUILDING A
TAMSA

2 BEDROOM
APARTMENT N°
102, 302.

INTERNAL AREA:	91m ²
BALCONY AREA:	8m ²
TOTAL:	99m ²



Disclaimer: This floor plan was prepared solely for the completion of construction and has been prepared for marketing purposes only. The information contained herein is provided to the extent that is not guaranteed. All areas, dimensions, diagrams and specifications shown are approximate only and are subject to change without notice in accordance with the provisions set out in the contract of sale. All areas are subject to final survey and completion of construction. The furniture and fittings depicted are not included with the sale and furniture should not be taken to indicate the final positions of items, quality, size, quantity, fit, construction, price and the like. The prospective purchaser should only rely on the contract of sale for details of conditions, building standards for services and the like. Prospective purchasers are encouraged to make their own personal tours and seek their own professional advice.



1800 775 055
INDUSTRI-NEWTOWN.COM.AU

S&B CBRE

06 DECEMBER 2013