



203/1 Australia Avenue Sydney Olympic Park NSW

2 2 1

Welcome to this bright and spacious 2-bedroom apartment on the second floor of the prestigious "Australia Towers" in Sydney Olympic Park which offers unparalleled convenience and desirability. Designed with comfort in mind, the east-facing apartment is bathed in natural light, creating a warm and inviting atmosphere. Its modern, functional layout ensures a seamless living experience.

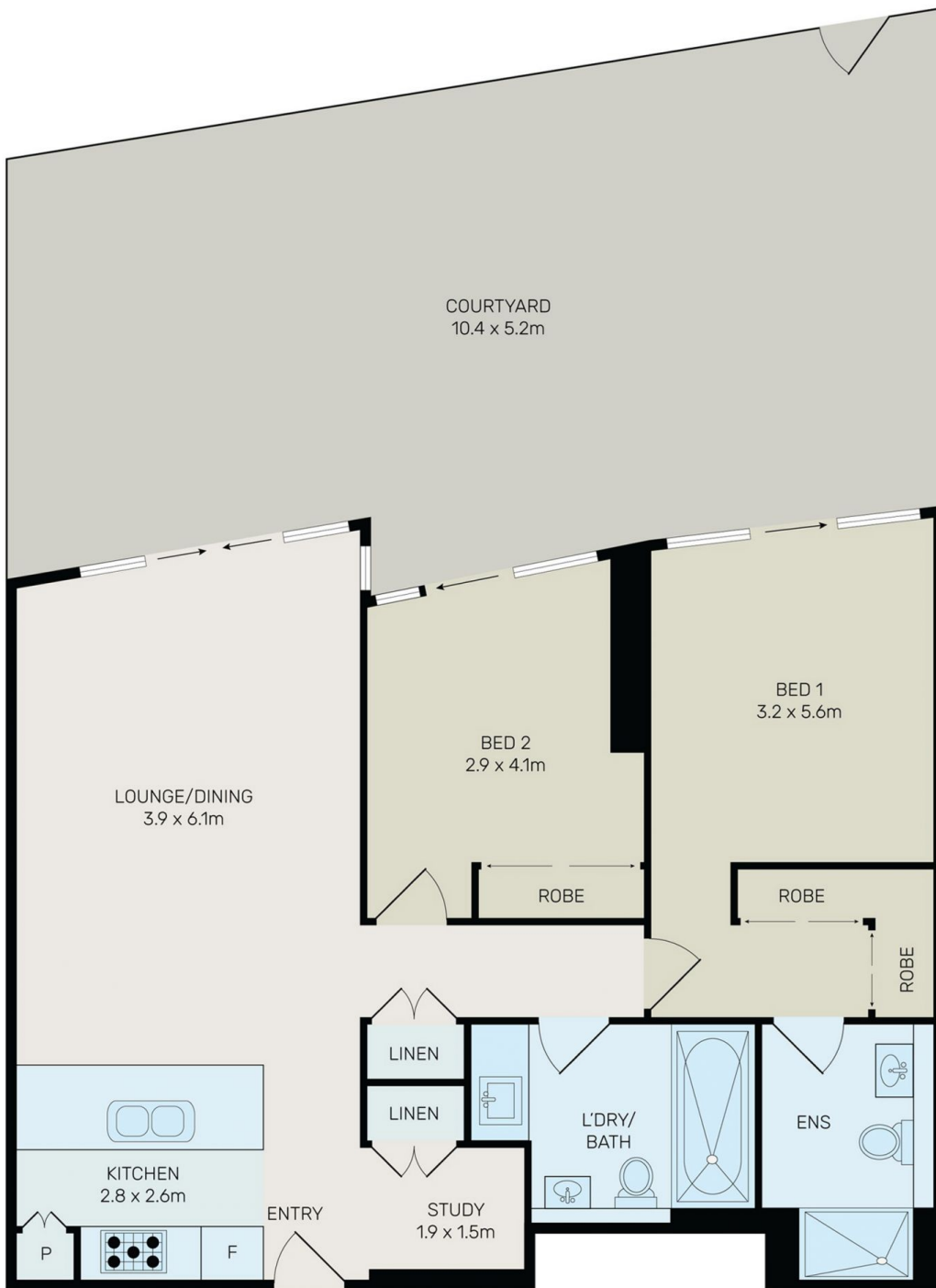
Located just moments away from renowned sports and recreation facilities like Cathy Freeman Park and the Sydney Olympic Park Aquatic Centre, residents have easy access to major sports events and concerts. Public transportation options, including bus stops, train stations, and a ferry terminal, are all within walking distance, making

[For full version visit the website](https://www.onespaceproperty.com.au)

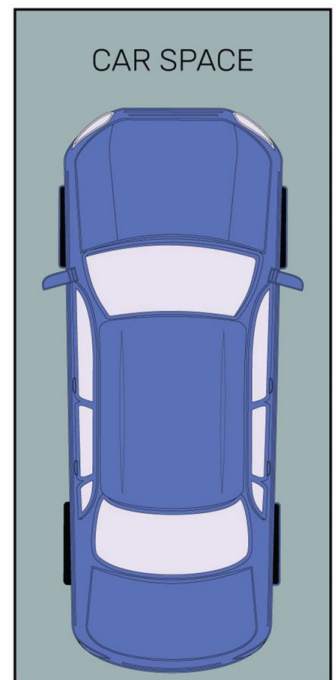
Type : Apartment
Building Size : 144 sqm
View : <https://www.onespaceproperty.com.au/sale/nsw/inner-west/sydney-olympic-park/residential/apartment/8050403>



John (junjie) Zhu
0292678810



STORAGE



All information contained herein is gathered from all sources we believe to be reliable. However we cannot guarantee its accuracy and interested parties should rely on their own enquiries.



203/1 Australia Avenue, Sydney Olympic Park