



## 14/11-13 Crane Street Homebush NSW

4 3 2

Nestled in the sought-after suburb of Homebush, this exceptional 4-bedroom unit epitomizes modern living at its finest. Situated on the top level of a secure, full-brick complex in a peaceful, tree-lined street, it offers a tranquil and contemporary lifestyle. Residents will enjoy convenient access to a wealth of amenities including Homebush West Shopping Village, Paddy's Markets, Lidcombe Shopping Centre, DFO, Rhodes Shopping Centre, North Strathfield Bakehouse Quarter, Strathfield Plaza, as well as Homebush train station, renowned schools, childcare centres, parks, Hudson Park Golf Course and Sydney Olympic Park.

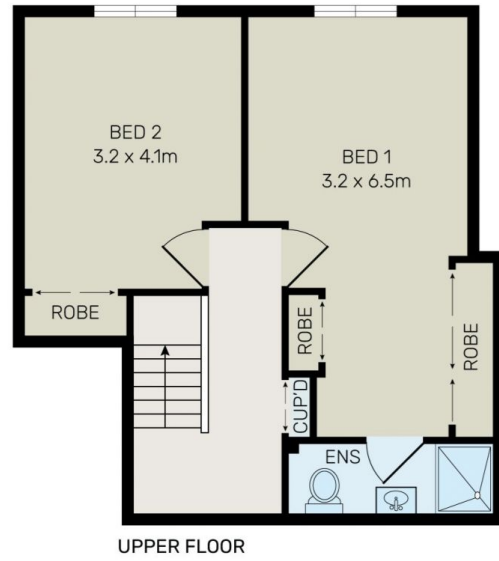
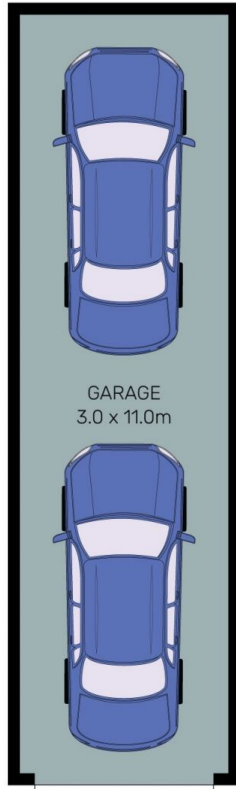
You'll Just Love:

[For full version visit the website](https://www.onespaceproperty.com.au/sale/nsw/inner-west/homebush/residential/unit/8051396)

**Type** : Unit  
**Building Size** : 170 sqm  
**View** : <https://www.onespaceproperty.com.au/sale/nsw/inner-west/homebush/residential/unit/8051396>



**John (junjie) Zhu**  
0292678810



All information contained herein is gathered from all sources we believe to be reliable. However we cannot guarantee its accuracy and interested parties should rely on their own enquiries.



# 14/11-13 Crane Street, Homebush