



## 330/43 Amalfi Drive Wentworth Point NSW

2 2 1

Perfectly positioned in the sought after Corsica Complex, this luxury 2 bedroom apartment offers a lifestyle of utmost convenience.

- Open plan lounge dining flows to private balcony
- Modern kitchen with stone bench tops, gas cooking & S/S appliances
- Large main bedroom with ensuite & built-in robes
- Spacious modern bathroom with quality finishes
- Secure car space, storage cage & Internal laundry with dryer
- Access to tennis courts, pool and library
- Close to Wentworth Point Public School and Newington library

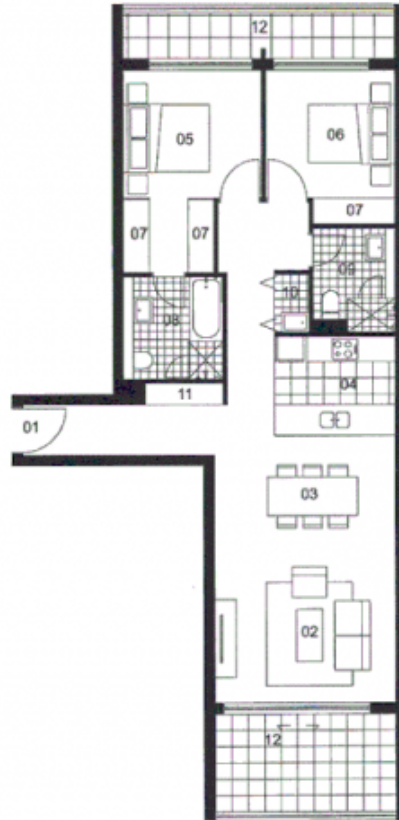
[For full version visit the website](https://www.onespaceproperty.com.au/lease/nsw/inner-west/wentworth-point/residential/apartment/8052376)

**Type** : Apartment

**View** : <https://www.onespaceproperty.com.au/lease/nsw/inner-west/wentworth-point/residential/apartment/8052376>



**Sharon (si) Shen**  
0292678810



LOCATION PLAN

**UNIT 330**  
 2 BEDROOM  
 INTERNAL AREA : 63 sqm  
 TERRACE AREA : 15 sqm  
 TOTAL AREA : 99 sqm

ENTRY	01
LIVING	02
DINING	03
KITCHEN	04
BEDROOM1	05
BEDROOM2	06
WARDROBE	07
ENSUITE	08
BATHROOM	09
LAUNDRY	10
STORE	11
BALCONY/COURTYARD	12

**CORSICA**

Disclaimer: The particulars are set out as a general outline for the guidance of intending purchasers and do not constitute an offer or contract. All descriptions, dimensions, references to conditions and necessary permissions for use and other details are given in good faith and are believed to be correct, but any intending purchaser should not rely on them as statements or representations of fact, but must satisfy themselves by inspection or otherwise to the correctness of each item, and where necessary seek independent advice. No third party supplier or their agents has any authority to make or give any representations or warranty in relation to this property. \* External areas may be larger for courtyard apartments. Refer to the detailed area schedule.