



1 Sunset Place Earlwood NSW

4 2 2

This beautifully presented family home is nestled in one of Earlwood's most peaceful, tree-lined streets. Just a short walk from Bardwell Park Station, local transport, shops, and quality schools, it offers an ideal blend of convenience and tranquility. With generous living spaces and high ceilings throughout, this home is a must-see.

Home Features:

- 4 spacious bedrooms
- Combined living and dining area
- Large original kitchen with side access downstairs
- Fully tiled, contemporary bathroom with a bathtub
- Well-maintained courtyard and veranda with district views

[For full version visit the website](#)

Type : House

View : <https://www.onespaceproperty.com.au/lease/nsw/inner-west/earlwood/residential/house/8104729>



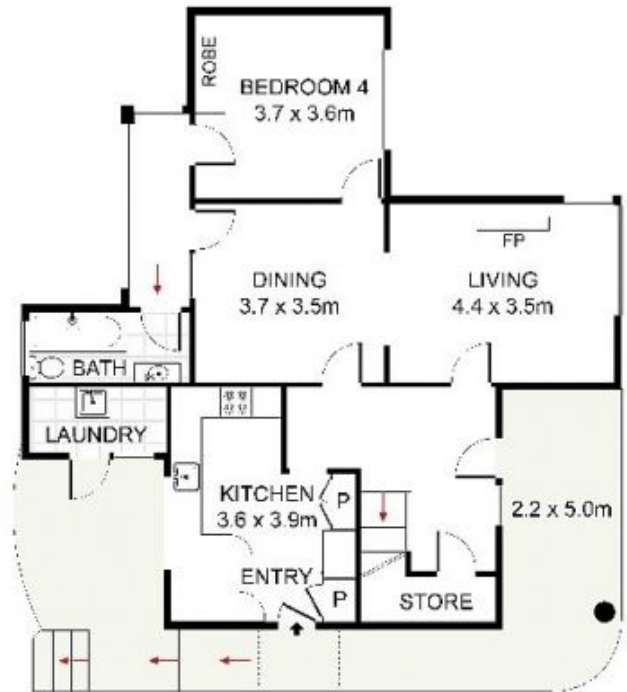
Charles (lei) Cheng
0292678810



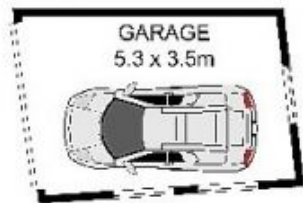
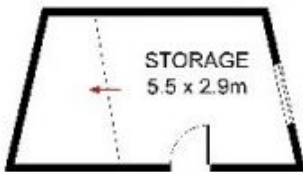
Rebecca Sun
0292678810



FLAT ONE



FLAT TWO



SITE PLAN



1 Sunset Place. Earlwood