



5/6-8 Winter Street Telopea NSW

2 1 1

Quietly positioned in a cul-de-sac, with easy access to future light rails (December 2024 service commencement) to Parramatta, Carlingford and in between. This exceptional sunlit 2-bedroom townhouse offers a perfect blend of convenience, functionality and spacious living.

Type : Townhouse

View : <https://www.onespaceproperty.com.au/lease/nsw/parramatta/telopea/residential/townhouse/8122905>

Looking for long-term lease, pet considered upon application!

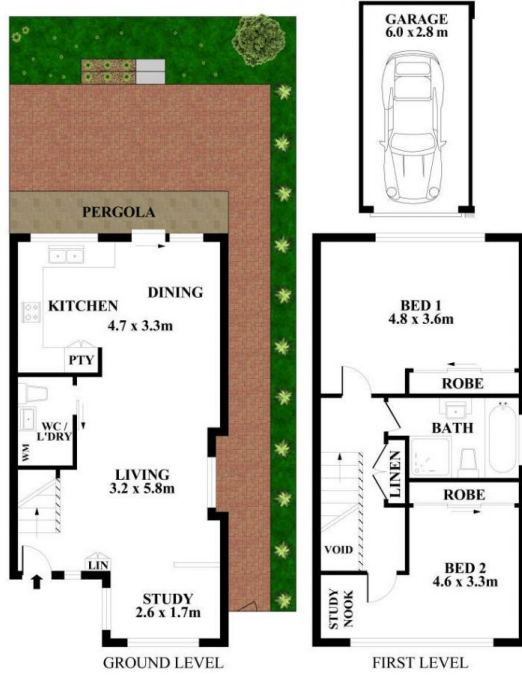
Property Features:

- Small complex consist of only 8 residences
- Situated at the rear of the complex with one common wall only
- Large open plan living area, with additional study corner

[For full version visit the website](#)



Sharon (si) Shen
0292678810



Plans shown are for presentation purposes only and not part of any legal document or title. They are subject to errors, omissions, inaccuracies and should not be used as a sole and accurate reference interested parties should make their own inquiries using independent sources.

5/6-8 Winter Street, Telopea