



G09/39-47 Mentmore Avenue Rosebery NSW

1 1 1

Nestled within the exclusive "Gusto" complex in Rosebery, this impeccably designed ground-level apartment epitomizes refined urban living with a touch of serene sophistication. Thoughtfully crafted with dual-facing aspects, it ensures a harmonious balance of natural light and privacy, offering an inviting sanctuary in the heart of one of Sydney's most vibrant enclaves.

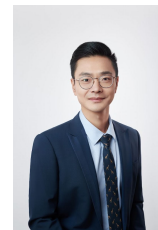
Type : Apartment
Price : \$ 760,000
Building Size : 104 sqm
View : <https://www.onespaceproperty.com.au/sale/nsw/eastern-suburbs/rosebery/residential/apartment/8153267>

A leisurely stroll will take you to the renowned Green Square Station, boutique shopping options, and a myriad of transport links. Around the corner lies The Cannery, a gourmet and lifestyle haven, home to celebrated destinations such as Three Blue Ducks, Archie Rose Distillery, and the iconic Black Star Pastry. Immerse

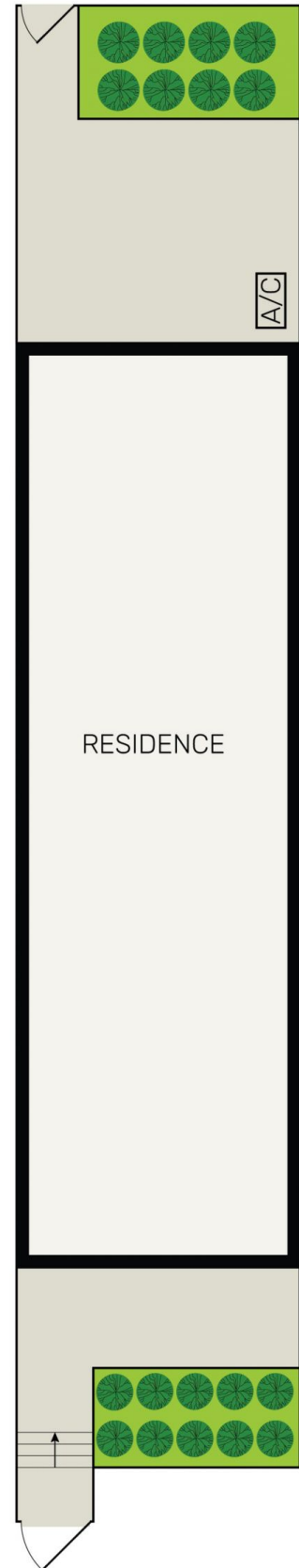
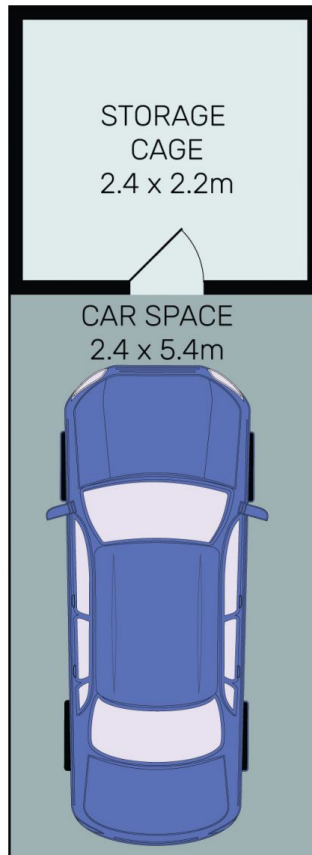
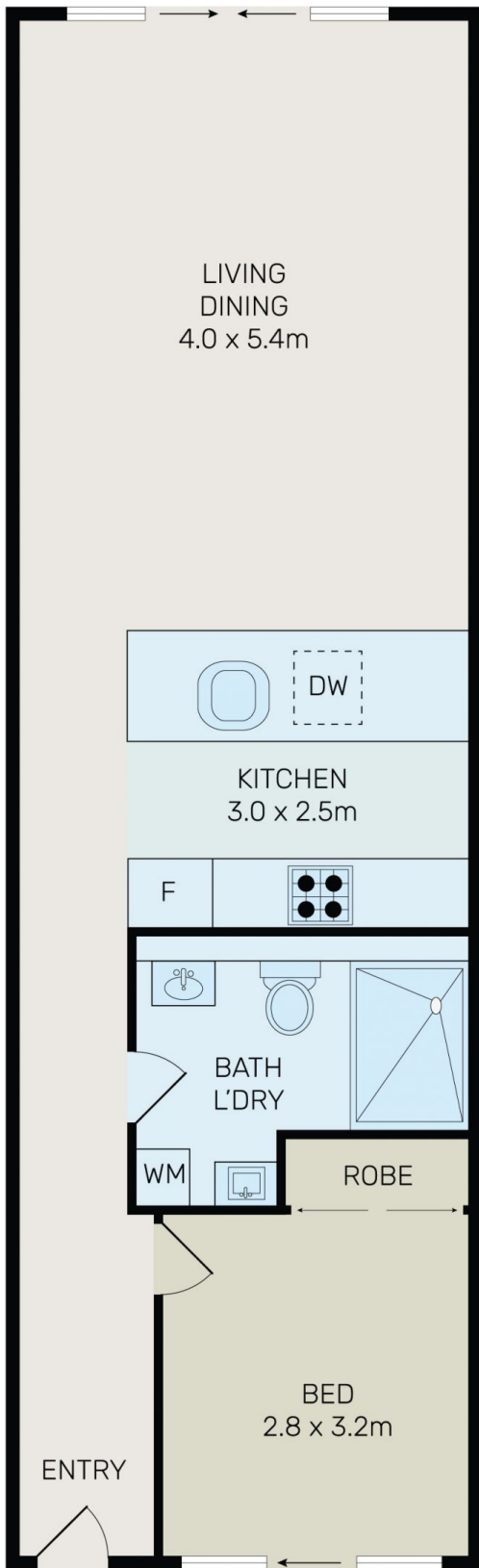
[For full version visit the website](https://www.onespaceproperty.com.au)



John (junjie) Zhu
0292678810



Jerry (shijun) Zhao
0438 998 668



All information contained herein is gathered from all sources we believe to be reliable. However we cannot guarantee its accuracy and interested parties should rely on their own enquiries.



G09/39-47 Mentmore Avenue, Rosebery