



1118/1 Steam Mill Lane Haymarket NSW

1 1

Discover Urban Elegance at 1118/1 Steam Mill Lane, Haymarket

Nestled in the vibrant Darling Square precinct, 1118/1 Steam Mill Lane offers unparalleled access to the best of Sydney. Just moments away from the iconic Darling Harbour, bustling Chinatown, and the heart of the Sydney business district, this location combines convenience with an energetic lifestyle. Major transport hubs are within easy reach, ensuring seamless connectivity to the rest of the city.

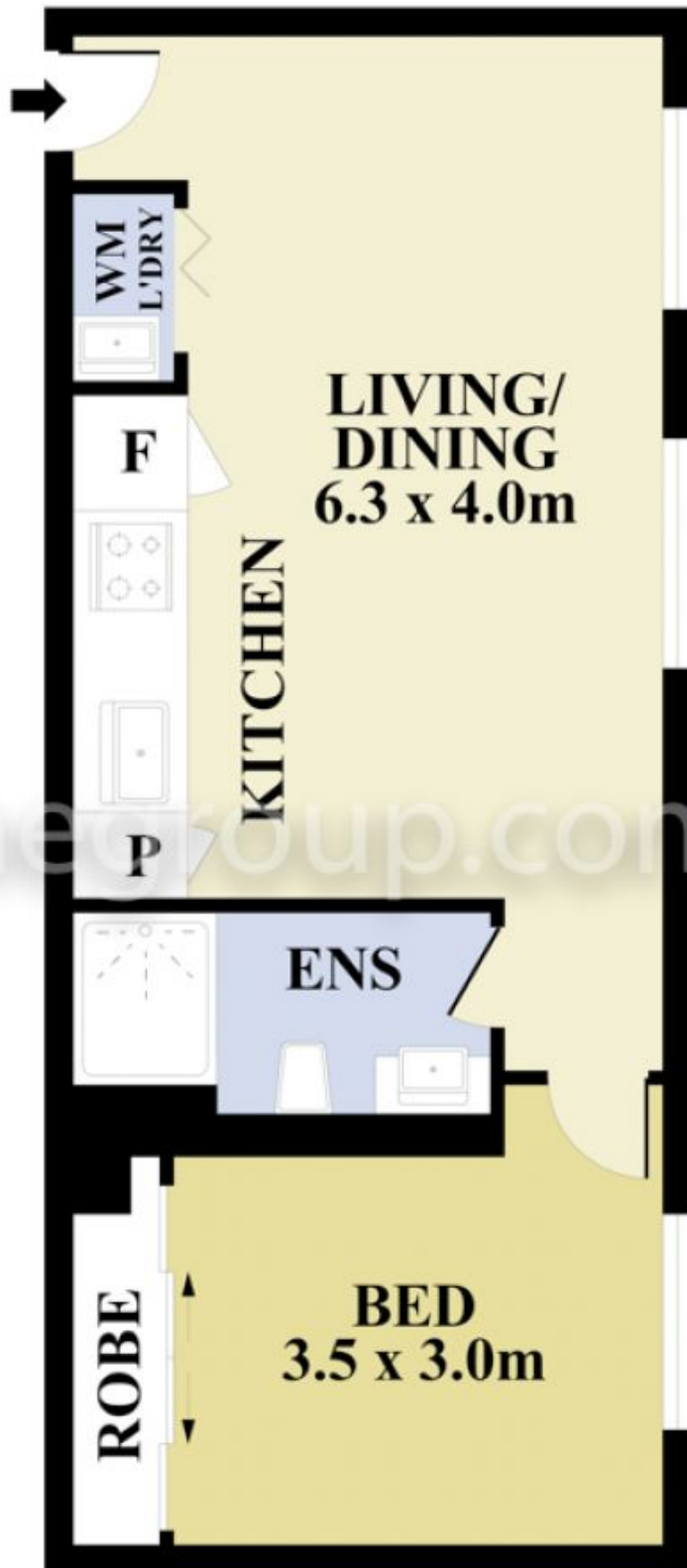
This exquisite building boasts modern architecture and refined finishes, creating an inviting atmosphere for

[For full version visit the website](https://www.onespaceproperty.com.au/lease/nsw/sydney-city/haymarket/residential/apartment/8164826)

Type : Apartment
View : <https://www.onespaceproperty.com.au/lease/nsw/sydney-city/haymarket/residential/apartment/8164826>



Rebecca Sun
0292678810



Floor Plan measurements are approximate and are for illustrative purposes only. While we cannot doubt the floor plans accuracy, we make no guarantee, warranty or representation as to the accuracy and completeness of the floor plan



1118/1 Steam Mill Lane, Haymarket