



## 109/13 Joynton Avenue Zetland NSW

1 1

Discover your new home at 109/13 Joynton Avenue, Zetland! This stunning 1-bedroom apartment is located within the prestigious Emerald Park complex, offering a perfect blend of modern elegance and urban convenience.

### Key Features:

**Spacious Living:** Enjoy a generous open-plan living area that is flooded with natural light, creating a warm and inviting atmosphere.

**Modern Kitchen:** Equipped with high-quality European appliances, perfect for culinary enthusiasts.

**Comfortable Bedroom:** A well-sized bedroom with built-in wardrobes for ample storage.

**Outdoor Space:** Private balcony ideal for relaxation or entertaining guests.

**Type** : Unit  
**Building Size** : 71 sqm  
**View** : <https://www.onespaceproperty.com.au/lease/nsw/eastern-suburbs/zetland/residential/unit/8216326>

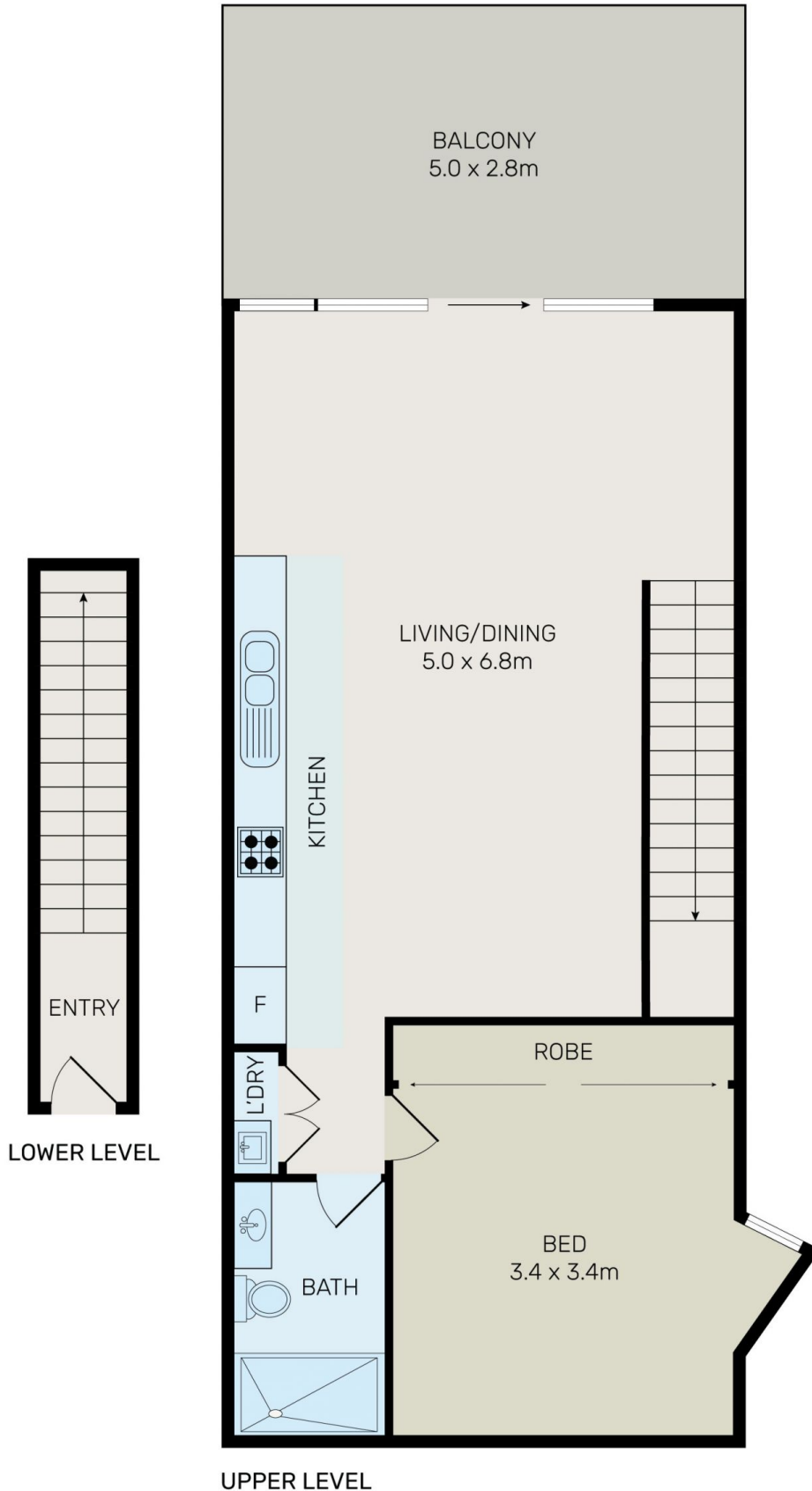


**Charles (lei) Cheng**  
0292678810



**Kevin Jingxian Zhao**  
0427763979

[For full version visit the website](https://www.onespaceproperty.com.au)



LOWER LEVEL

UPPER LEVEL



All information contained herein is gathered from all sources we believe to be reliable. However we cannot guarantee its accuracy and interested parties should rely on their own enquiries.



109/13 Joynton Avenue, Zetland