



1107/13 Verona Drive Wentworth Point NSW

2 2 1

Located just footsteps from all the convenient lifestyle benefits Wentworth Point has to offer, this contemporary luxury 2-bedroom apartment has a mix of modern sophistication and the warm cosy comfort of a spacious home. Marina Square Shopping Centre, Wentworth Point Public School, local shops, cafes, restaurants, bus stops, ferry wharf and Bennelong Bridge which provides a quick link to Rhodes are just within short walking distance.

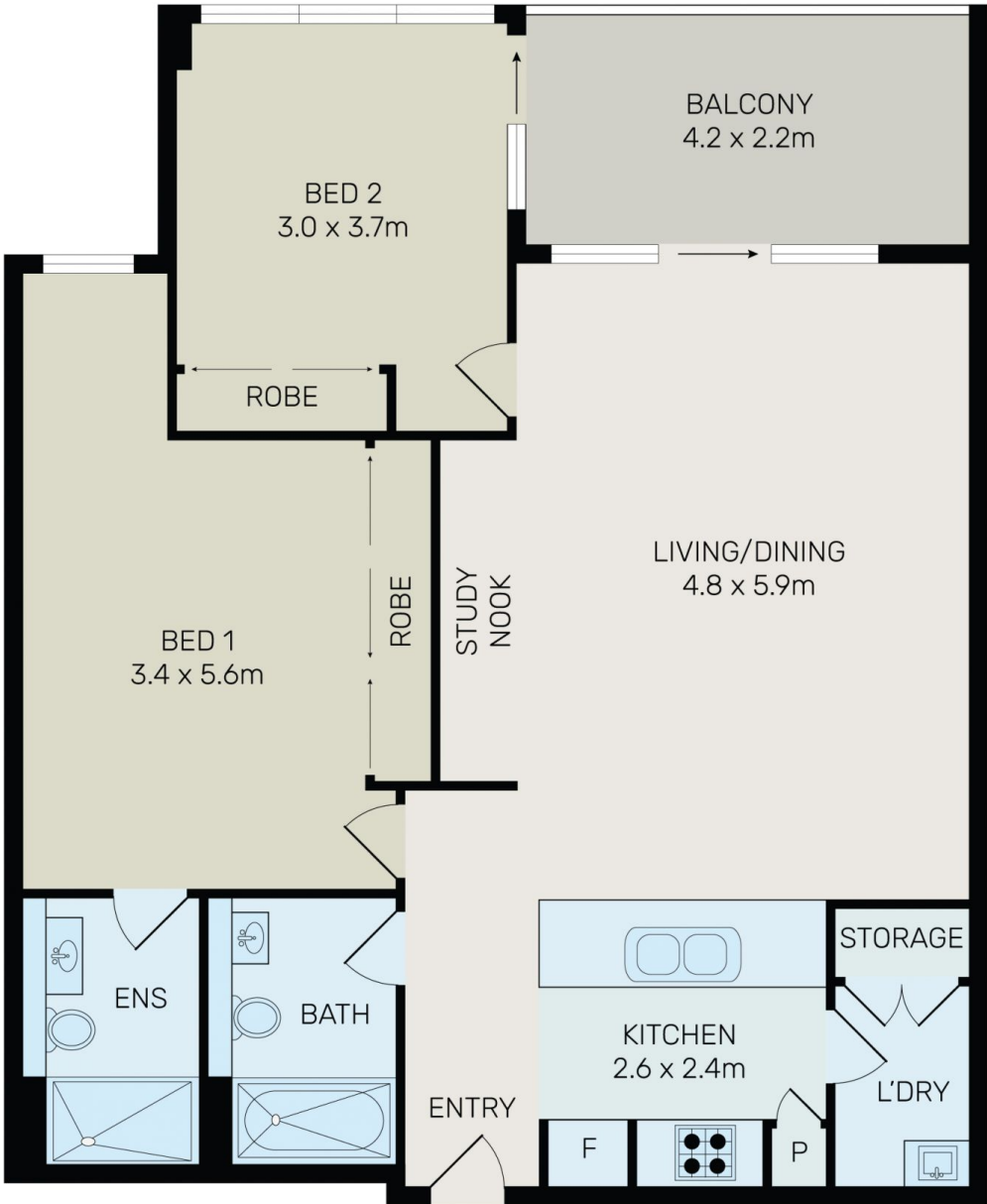
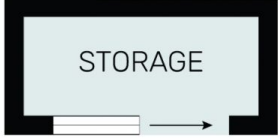
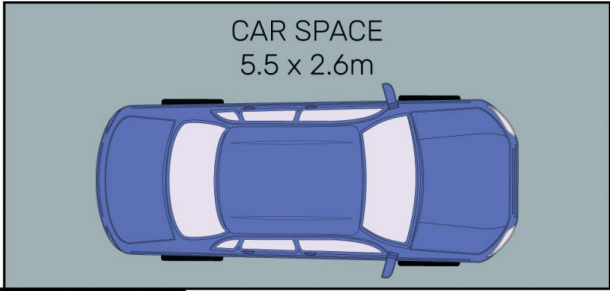
Centrally located just 18 kilometres from Sydney CBD, this private level 11, two-bedroom apartment is situated in the iconic "Savannah" complex offering fantastic resort style amenities including gym, indoor swimming pool, BBQ facilities and dedicated onsite concierge service which are

[For full version visit the website](https://www.onespaceproperty.com.au)

Type : Apartment
Building Size : 105 sqm
View : <https://www.onespaceproperty.com.au/sale/nsw/inner-west/wentworth-point/residential/apartment/8251658>



John (junjie) Zhu
0292678810



All information contained herein is gathered from all sources we believe to be reliable. However we cannot guarantee its accuracy and interested parties should rely on their own enquiries.



1107/13 Verona Drive, Wentworth Point