



## G09/39-47 Mentmore Avenue Rosebery NSW

1 1 1

Nestled within the exclusive "Gusto" complex in Rosebery, this impeccably designed ground-level apartment epitomizes refined urban living with a touch of serene sophistication. Thoughtfully crafted with dual-facing aspects, it ensures a harmonious balance of natural light and privacy, offering an inviting sanctuary in the heart of one of Sydney's most vibrant enclaves.

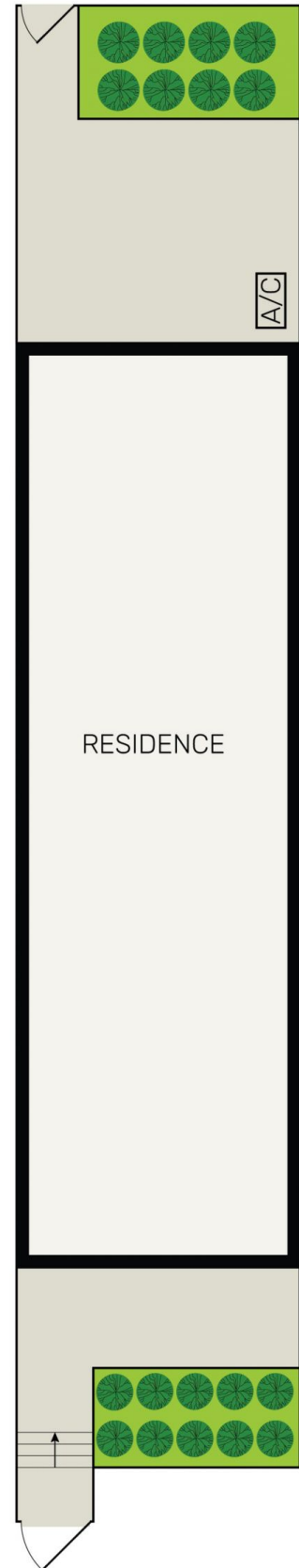
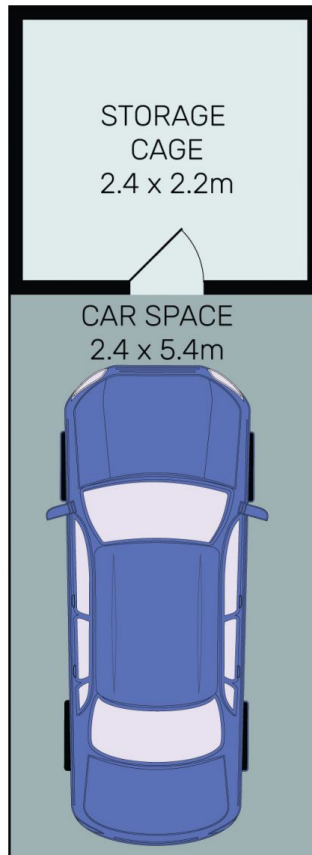
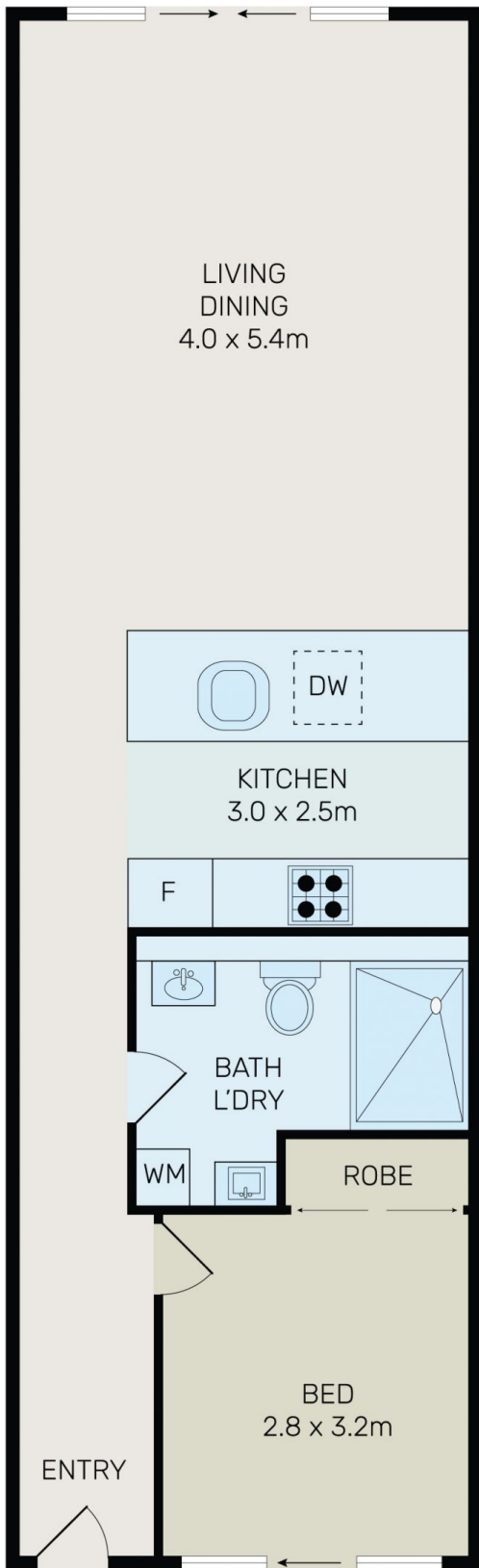
A leisurely stroll will take you to the renowned Green Square Station, boutique shopping options, and a myriad of transport links. Around the corner lies The Cannery, a gourmet and lifestyle haven, home to celebrated destinations such as Three Blue Ducks, Archie Rose Distillery, and the iconic Black Star Pastry. Immerse

[For full version visit the website](https://www.onespaceproperty.com.au)

**Type** : Apartment  
**Building Size** : 104 sqm  
**View** : <https://www.onespaceproperty.com.au/lease/nsw/eastern-suburbs/rosebery/residential/apartment/8252699>



**Charles (lei) Cheng**  
0292678810



All information contained herein is gathered from all sources we believe to be reliable. However we cannot guarantee its accuracy and interested parties should rely on their own enquiries.



# G09/39-47 Mentmore Avenue, Rosebery