



307/233-235 Botany Road Waterloo NSW

2 🛏 2 🚿 1 🚗

Experience the perfect balance of inner-city sophistication and everyday convenience in this stunning split-level 2-bedroom apartment. Ideally located just 4km from Sydney CBD, this northeast-facing residence spans an impressive 115 SQM on title across private levels 3 & 4. Designed for modern living, the spacious open-plan layout maximizes natural light and functionality, creating a seamless flow between living, dining, and outdoor spaces.

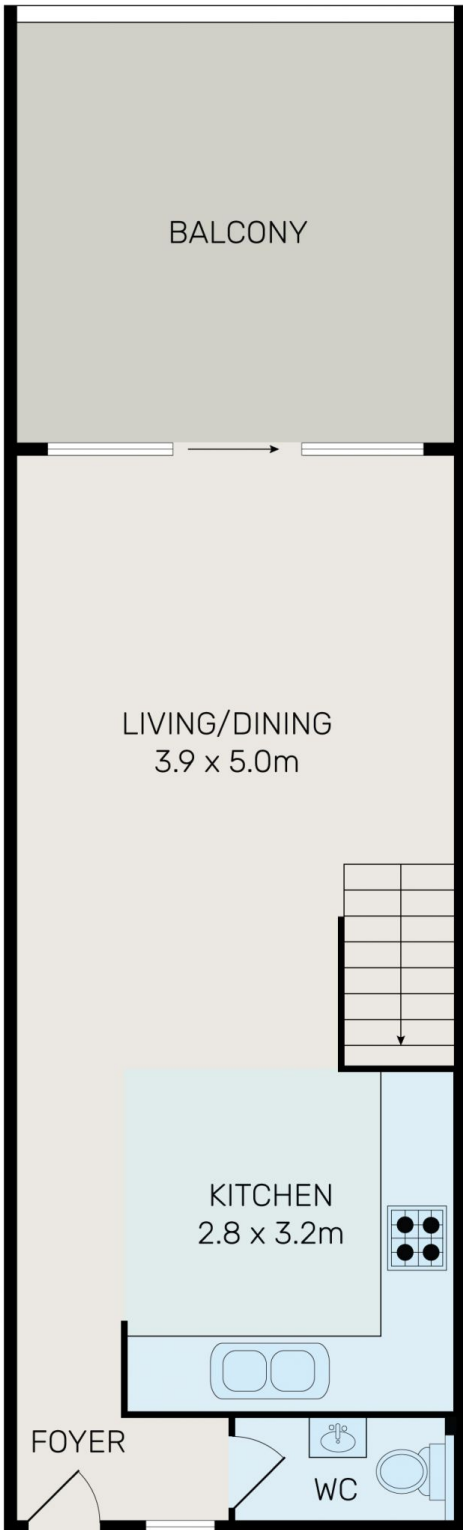
Enjoy unparalleled access to Green Square shopping, train station, universities, hospitals, parks, golf courses, and the stunning Eastern Suburbs beaches—all just moments away. Whether you're looking for a stylish urban retreat or a smart investment in a thriving precinct, this apartment delivers on

[For full version visit the website](https://www.onespaceproperty.com.au)

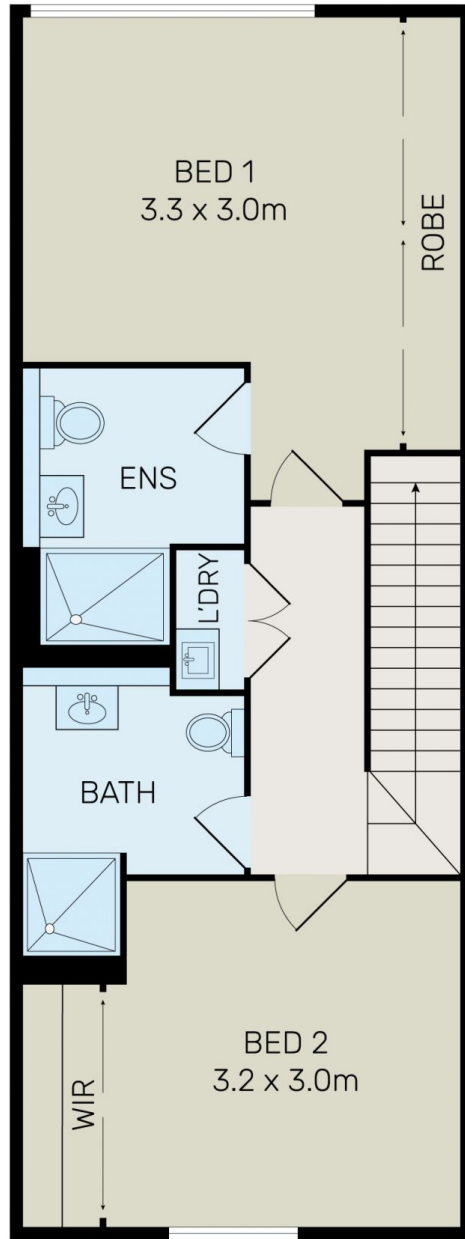
Type : Apartment
Building Size : 115 sqm
View : <https://www.onespaceproperty.com.au/sale/nsw/eastern-suburbs/waterloo/residential/apartment/8275570>



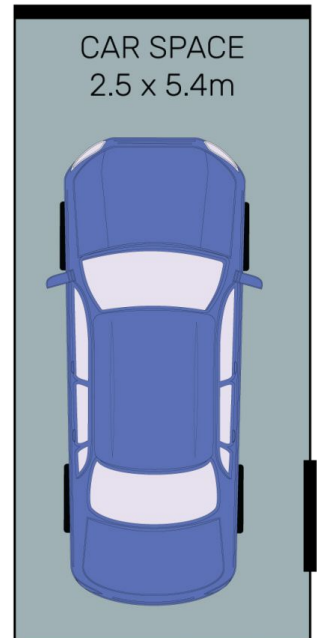
John (junjie) Zhu
0292678810



FLOOR 1



FLOOR 2



All information contained herein is gathered from all sources we believe to be reliable. However we cannot guarantee its accuracy and interested parties should rely on their own enquiries.



307/233-235 Botany Road, Waterloo