



1608/46 Savona Drive Wentworth Point NSW

1 1 1

Quality lifestyle Awaits - a chic, cleverly & immaculately designed apartments with elevated podium courtyard and plenty of lush, private spaces for the exclusive use of Taiga residents and their guests.

#### THE APARTMENT FEATURES:

- \* Immaculate designed bedrooms with built-in robes
- \* Master bedroom with ensuite bathroom
- \* Modern, open plan layout with free-flowing living/dining area access to balcony
- \* Kitchen equipped with cooktop and oven, stainless steel microwave & Blanco integrated dishwasher
- \* Air-conditioning
- \* Security intercom system and secured building access

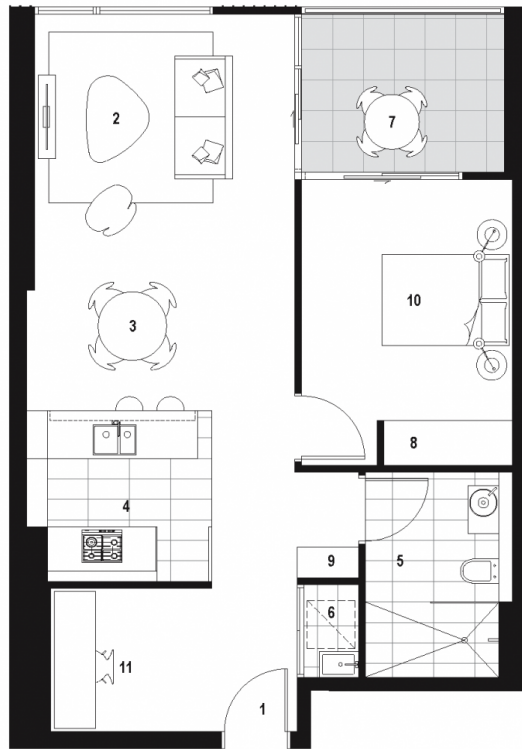
[For full version visit the website](https://www.onespaceproperty.com.au)

**Type** : Apartment

**View** : <https://www.onespaceproperty.com.au/lease/nsw/inner-west/wentworth-point/residential/apartment/8277217>



**Sharon (si) Shen**  
0292678810



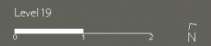
the  
**ADDRESS**  
WENTWORTH POINT

TAIGA

**APARTMENT A19.08**

1 Bed/1 Bath

Internal Area	63 sqm
External Area	7 sqm
<b>Total Area</b>	<b>70 sqm</b>



**KEY**

- |             |            |
|-------------|------------|
| 01 Entry    | 07 Balcony |
| 02 Living   | 08 Robe    |
| 03 Dining   | 09 Store   |
| 04 Kitchen  | 10 Bedroom |
| 05 Bathroom | 11 Utility |
| 06 Laundry  |            |

1800 333 818  
TheAddressApartments.com.au



Revision 02 5/05/15

Disclaimer: The particulars are set out as a general outline for the guidance of intending purchasers and do not constitute an offer or contract. All descriptions, dimensions, references to conditions and necessary permutations for use and other details are given in good faith and are believed to be correct, but any intending purchasers should not rely on them as statements or representations of fact, but must satisfy themselves by inspection or otherwise to the correctness of each item, and where necessary seek advice. No third party supplier or their agents has any authority to make or give any representations or warranty in relation to this property. \*External areas may be larger for courtyard apartments. Refer to the detailed area schedule.