

67 Shoreline Drive Rhodes NSW

2 1 2

Designed for effortless modern living, this stunning split-level residence in the prestigious Village Quay building offers a perfect blend of style, space, and comfort. Thoughtfully renovated and bathed in natural light, its well-appointed interiors create an inviting atmosphere for relaxation and entertaining.

Positioned just moments from Rhodes' vibrant retail, dining, and transport options, this exceptional home is ideal for young families and downsizers looking for convenience without compromise.

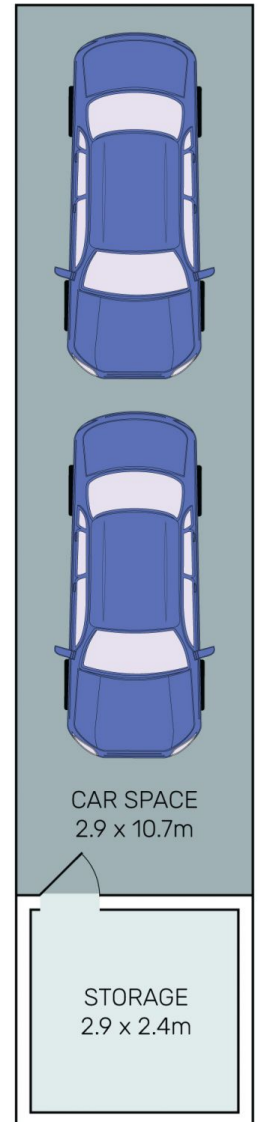
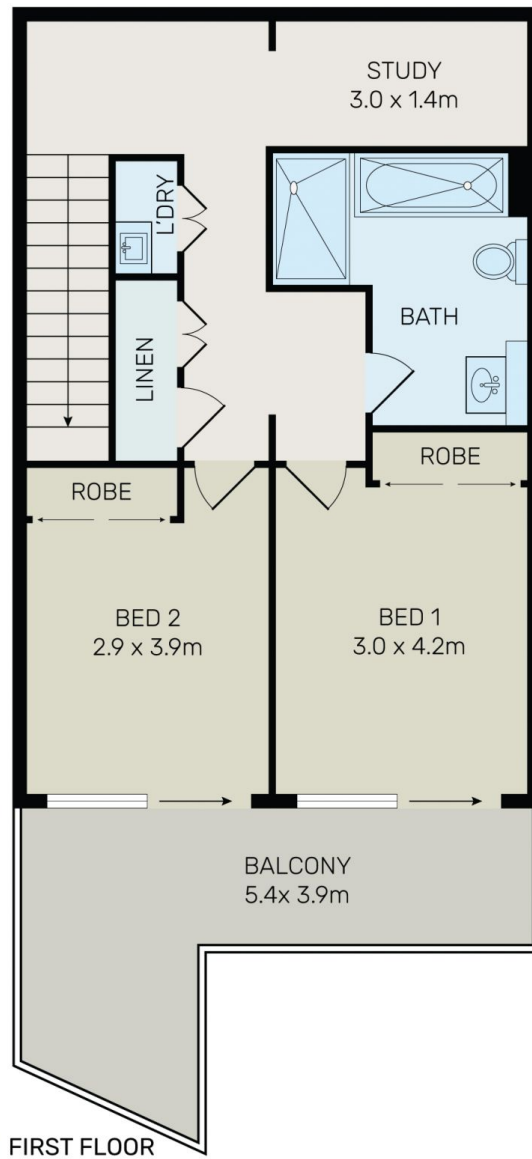
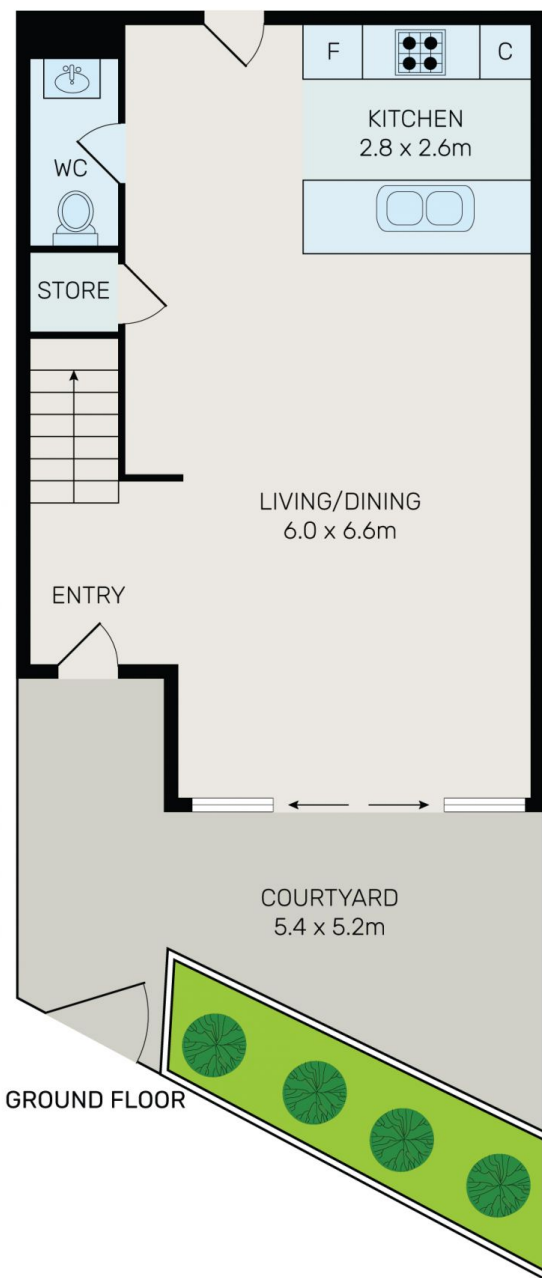
Apartment Features:

[For full version visit the website](https://www.onespaceproperty.com.au)

Type : Apartment
Price : \$ 1,020,000
Building Size : 169 sqm
View : <https://www.onespaceproperty.com.au/sale/nsw/inner-west/rhodes/residential/apartment/8293189>



John (junjie) Zhu
0292678810



All information contained herein is gathered from all sources we believe to be reliable. However we cannot guarantee its accuracy and interested parties should rely on their own enquiries.



67 Shoreline Drive, Rhodes