

## 2008/13 Verona Drive Wentworth Point NSW

2 2 1

Positioned on Level 20 - the sub-penthouse level of the prestigious Savannah building, this stunning apartment offers uninterrupted vistas of sparkling waterways and lush parklands. Designed to blend tranquillity with modern convenience, this residence is the perfect sanctuary in one of Sydney's most desirable waterfront precincts.

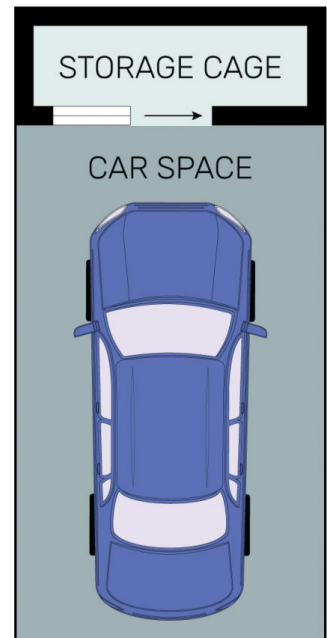
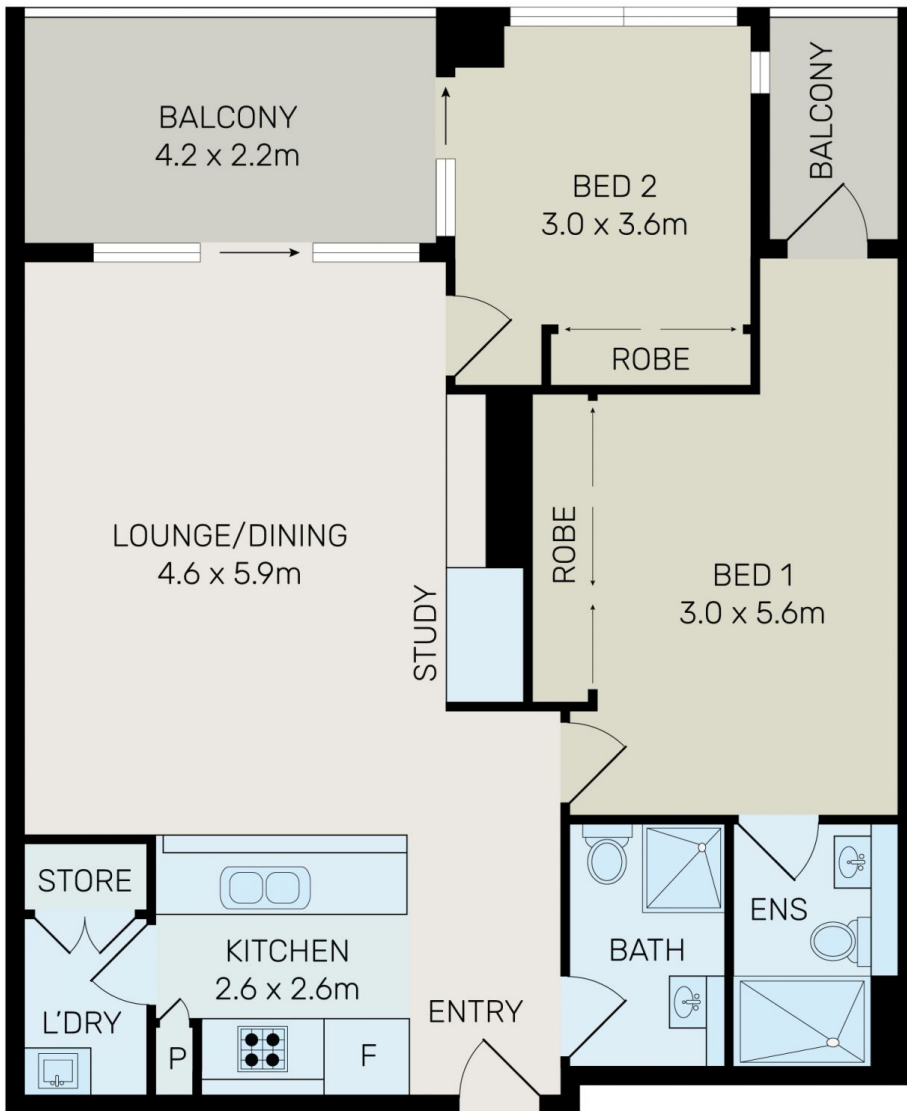
Located just moments from Marina Square Shopping Centre, Pierside retail and dining, the Community Centre & Public Library, and Wentworth Point Public School and SOP high school, everything you need is right at your doorstep.

**Type** : Unit

**View** : <https://www.onespaceproperty.com.au/sale/nsw/inner-west/wentworth-point/residential/unit/8322574>



**Jeff (kwok Fu) Chau**  
0292678810



All information contained herein is gathered from all sources we believe to be reliable. However we cannot guarantee its accuracy and interested parties should rely on their own enquiries.



# 2008/13 Verona Drive, Wentworth Point