



## 601/10 Waterview Drive Lane Cove NSW

2 2 1

Discover the perfect blend of modern sophistication and serene living in this luxurious 2-bedroom apartment, ideally located within the highly sought-after Bay Pavilions complex. Offering a peaceful retreat with a stylish contemporary edge, this residence presents an exceptional opportunity for first homebuyers or savvy investors alike.

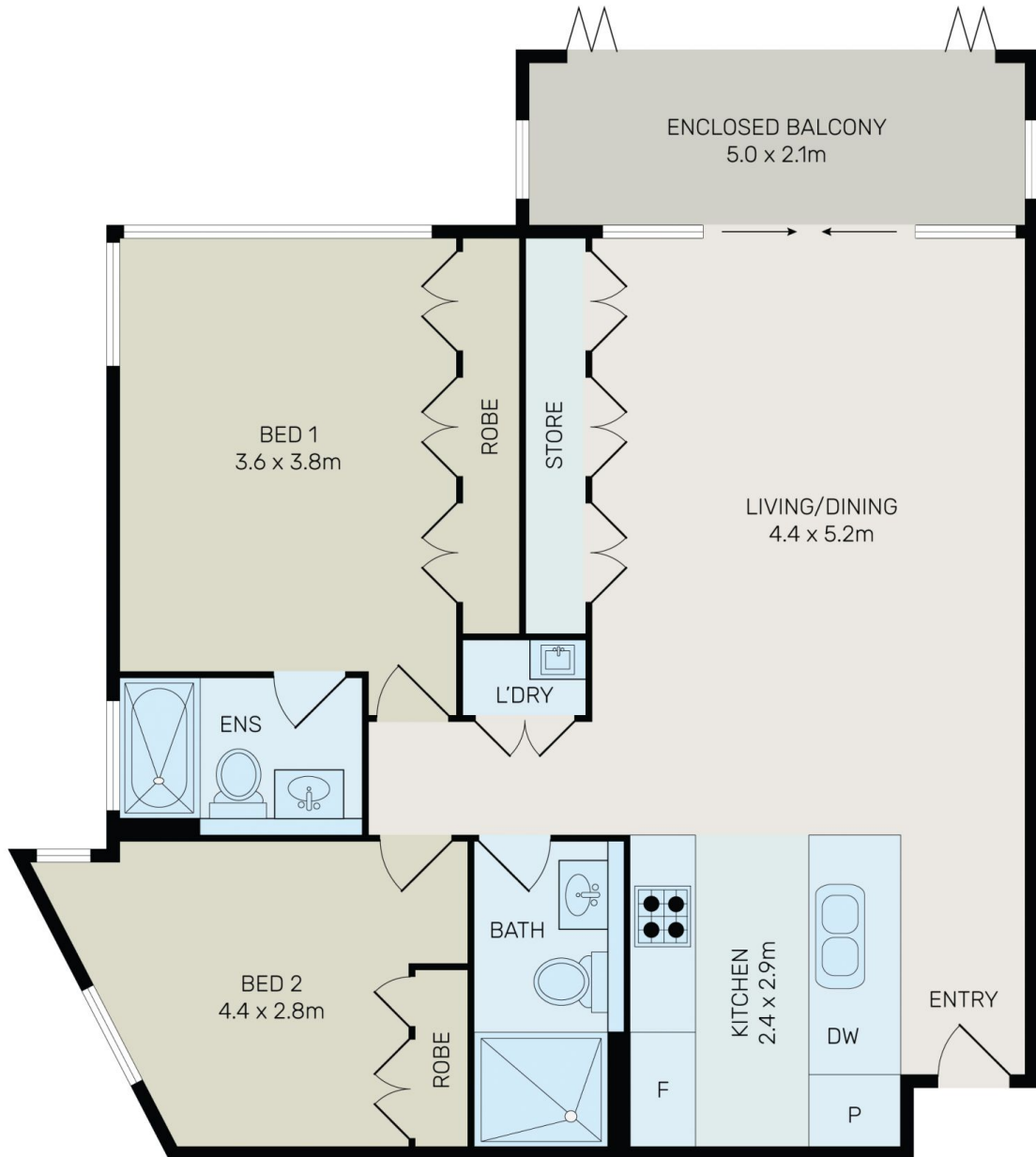
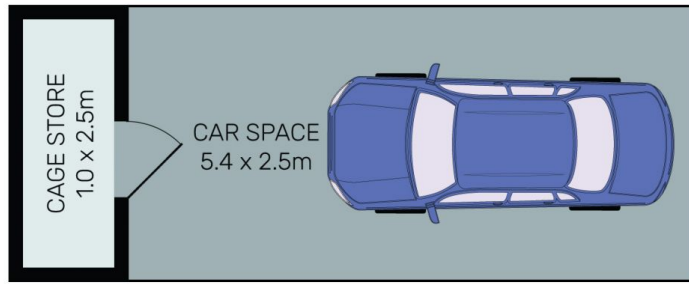
Positioned on a prized corner, the apartment is bathed in natural light and features a well-designed open-plan layout that seamlessly connects the sleek interior spaces to a generous winter garden overlooking elevated views of the lush greenery of Burns Bay Reserve and the tranquil Lane Cove River.

**Type** : Apartment  
**Price** : \$ 875,000  
**Building Size** : 101 sqm  
**View** : <https://www.onespaceproperty.com.au/sale/nsw/north-shore-lower/lane-cove/residential/apartment/8358291>



**John (junjie) Zhu**  
0292678810

[For full version visit the website](https://www.onespaceproperty.com.au)



All information contained herein is gathered from all sources we believe to be reliable. However we cannot guarantee its accuracy and interested parties should rely on their own enquiries.



# 601/9 Waterview Drive, Lane Cove