



## 610/2 Honeyeater Street Lidcombe NSW

1 1 1

Nestled on the 6th floor of the illustrious "Sapphire" building, this exquisite one-bedroom apartment exudes luxury with its premium finishes and chic interiors. Perfect for discerning first home buyers and astute investors, it offers opulent living spaces that seamlessly blend comfort and sophistication, promising impressive rental returns.

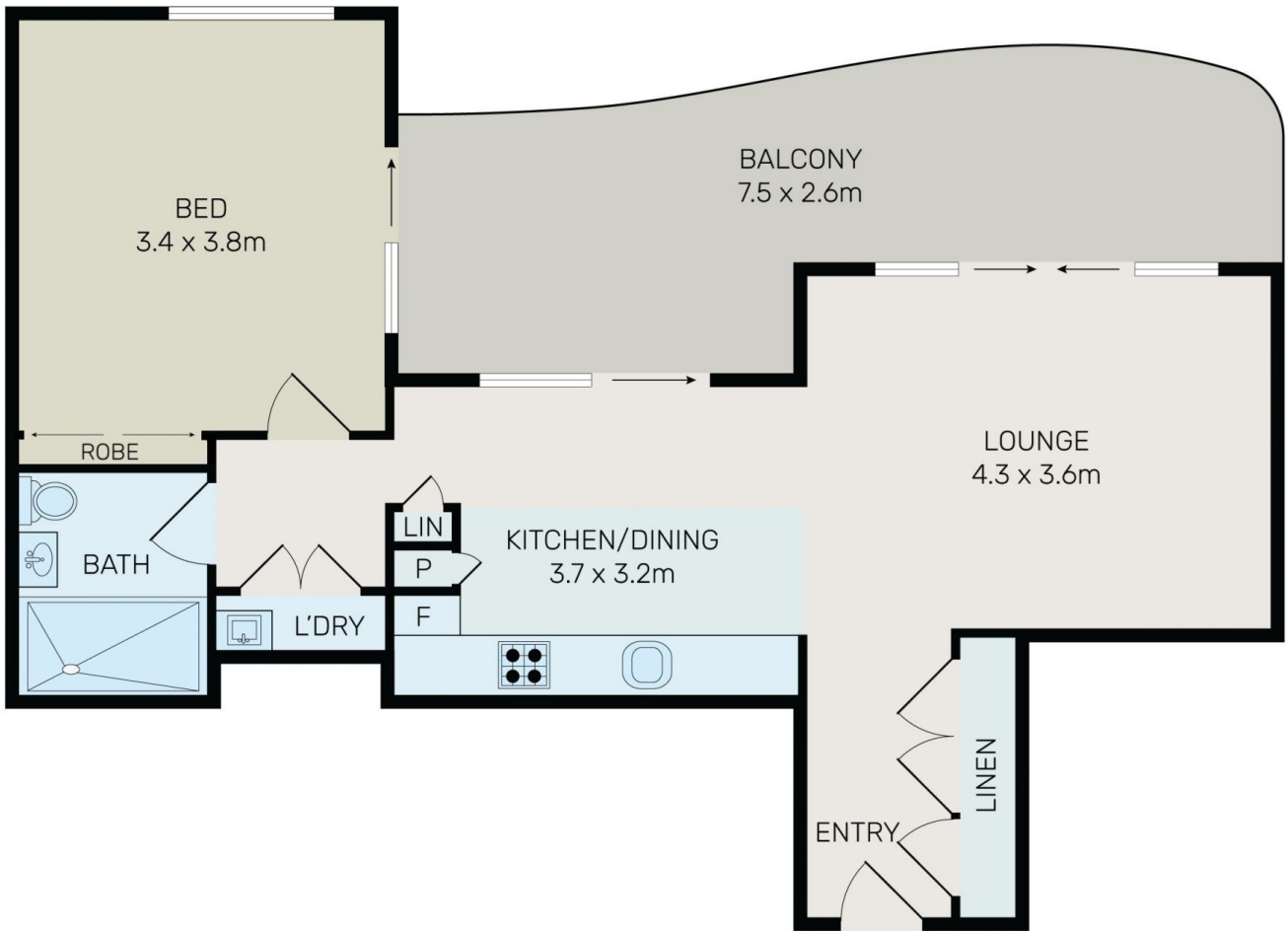
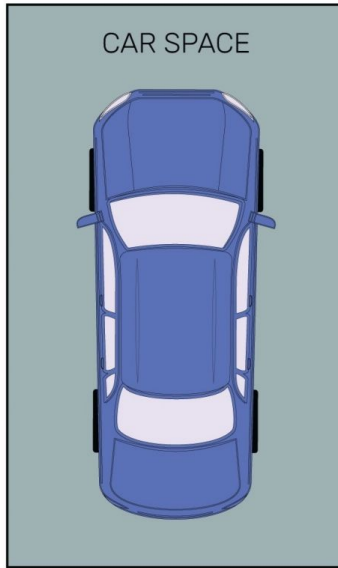
Strategically positioned near Sydney Olympic Park, this residence affords unparalleled access to an array of recreational and entertainment delights. Revel in the convenience of strolling to major sporting arenas, verdant parklands, gourmet restaurants, trendy cafes, shops and public transport. This property epitomizes the ultimate fusion of comfort, convenience, and aesthetic allure.

[For full version visit the website](https://www.onespaceproperty.com.au)

**Type** : Apartment  
**Price** : \$ 560,000  
**Building Size** : 86 sqm  
**View** : <https://www.onespaceproperty.com.au/sale/nsw/parramatta/lidcombe/residential/apartment/8381095>



**John (junjie) Zhu**  
0292678810



All information contained herein is gathered from all sources we believe to be reliable. However we cannot guarantee its accuracy and interested parties should rely on their own enquiries.



# 610/2 Honeyeater Street Lidcombe